

SECTION 11  
TOWNSHIP 78 NORTH, RANGE 4 EAST,  
5<sup>TH</sup> PRINCIPAL MERIDIAN

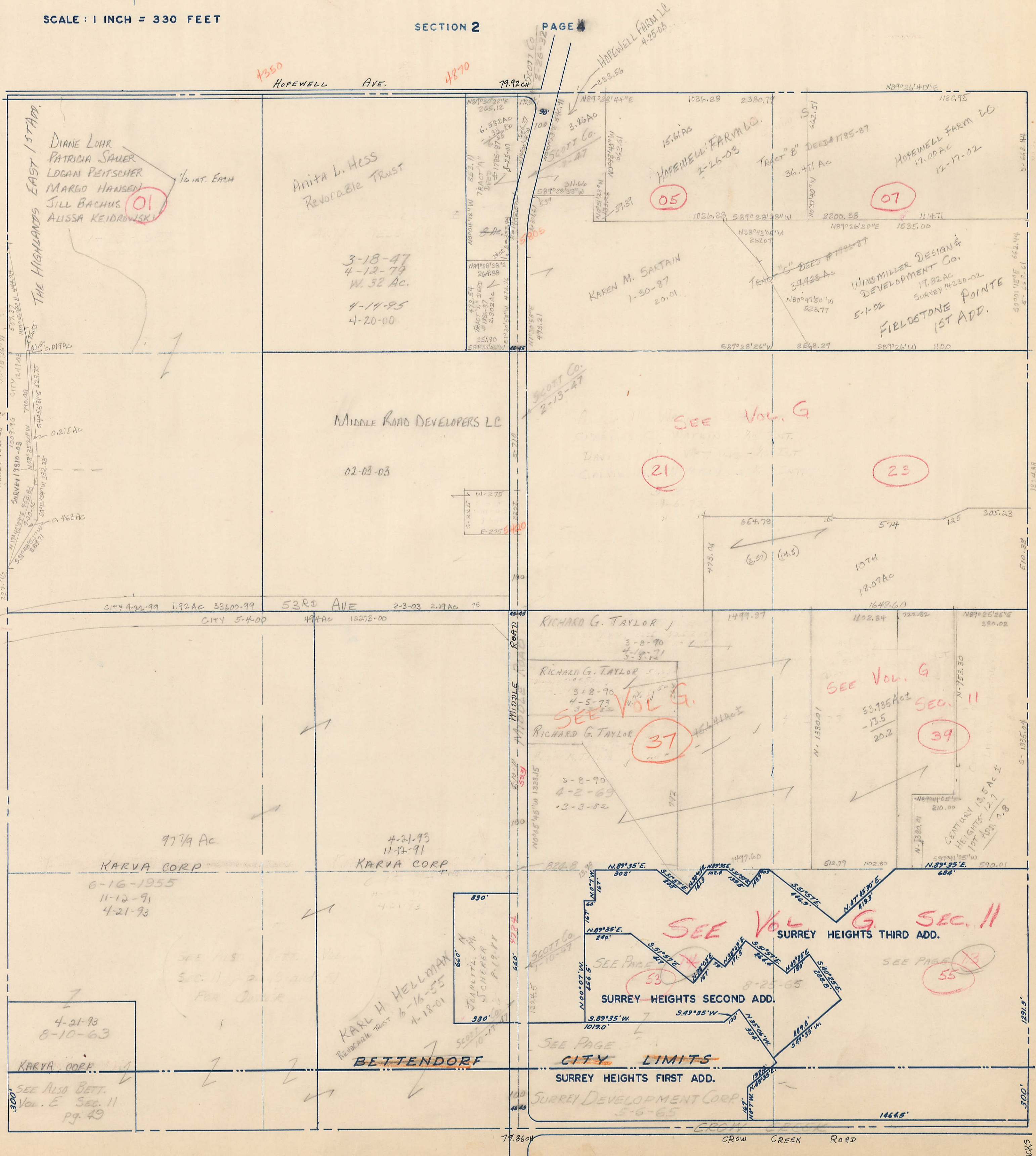
~~PLEASANT VALLEY TOWNSHIP~~  
CITY OF BETTENDORF  
SCOTT COUNTY, IOWA

TRANSFER PAGE 356

SCALE: 1 INCH = 330 FEET

SECTION 2

PAGE 4



PAGE 6

SECTION 10

PAGE 8

SECTION 12

11-78-4

1000'S ROAD