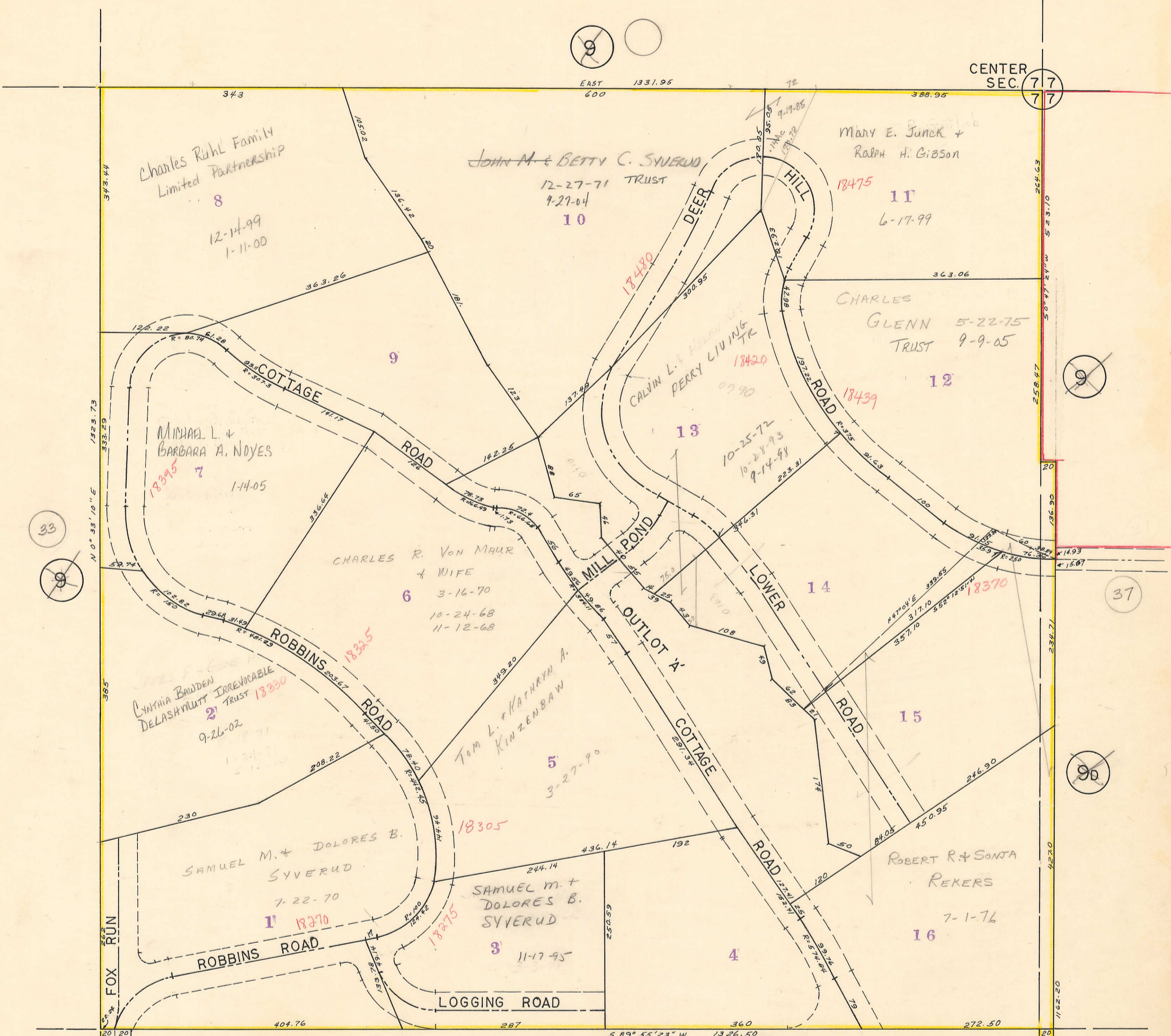


PART SECTION 7-78-5
PLEASANT VALLEY TOWNSHIP

NE 1/4, SW 1/4 SEC. 7-78-5
PART W 1/2 SE 1/4 SEC 7
SCALE: 1"=100'

9F



NOTE: ALL ROADWAY EASEMENTS 52'

WOODLANDS ADDITION

Filed 2-13-70
Transfer Page 1347 TL

BLANK LOTS: CHARLES A. RINHL
1-13-76
CHARLES R. VON MAHR
JOHN M. SYVERUD

SE. COR.
S.W. 1/4 7 7
18 18