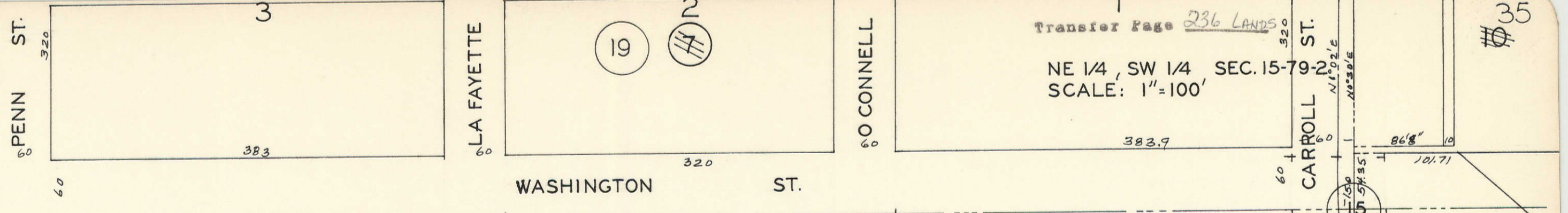


Transfer Page 236 LANDS

NE 1/4, SW 1/4, SEC. 15-79-2  
SCALE: 1"=100'



CITY OF MAYSVILLE

ALLEN R. + DOROTHY FISCHER

3-2-72

33

33

37

37

RAYMOND E. RALFS' PLAT

SEE HICKORY GROVE TWP.

