

SECTION 4

Township 79-North; Range 4

EAST OF THE FIFTH PRINCIPAL MERIDIAN

SCOTT COUNTY, IOWA

LINCOLN TOWNSHIP

NORTH

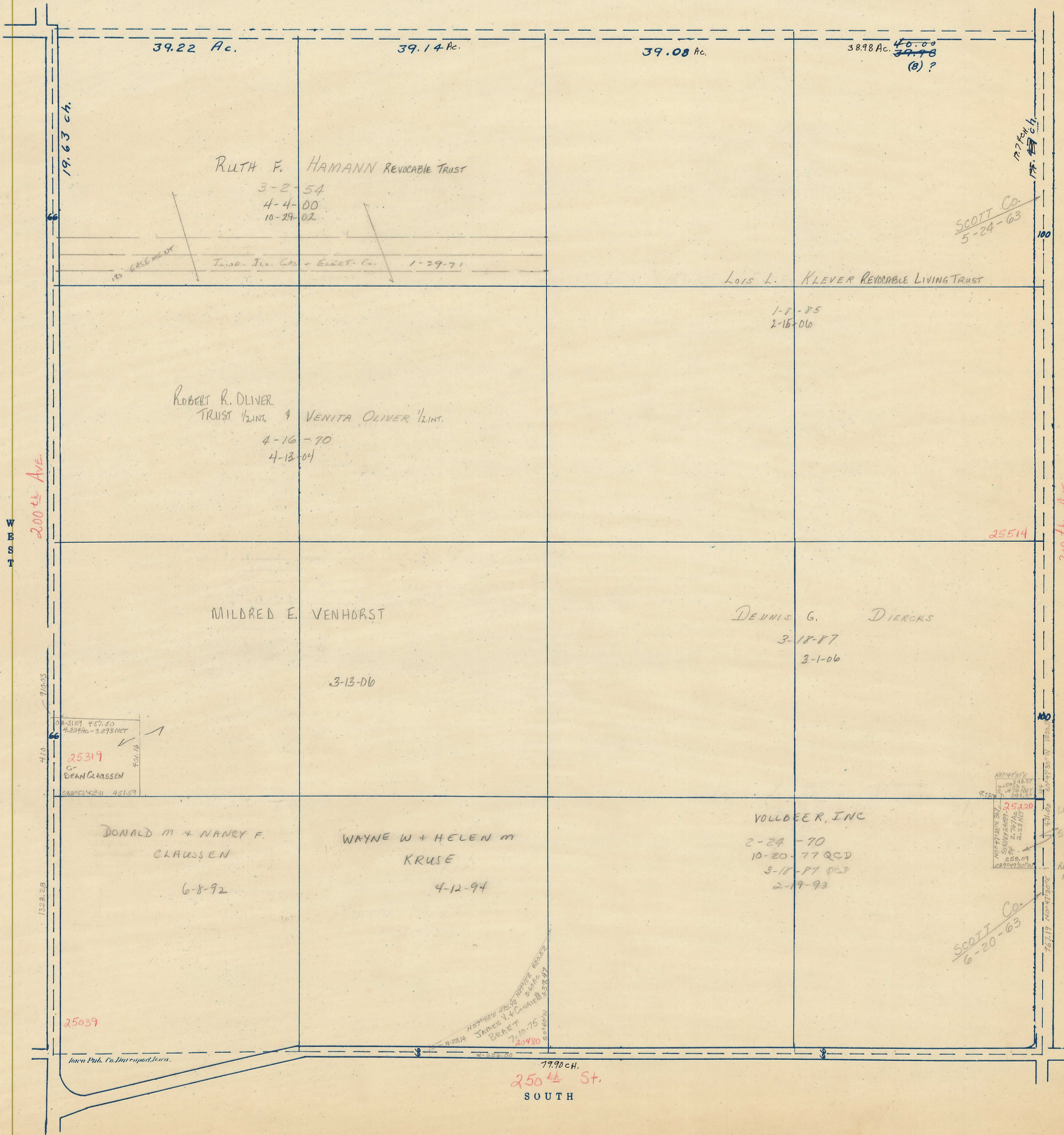
SCALE IN CHAINS



SCALE IN FEET



Transfer Page 324



39.22 Ac.

39.14 Ac.

39.08 Ac.

38.98 Ac. 40.00
39.98
(B)?

RUTH F. HAMANN REVOCABLE TRUST

3-2-54
4-4-00
10-29-02

10' EASEMENT
Twp. Ill. Co. + Ellet. Co. 1-29-71

LOIS L. KLEVER REVOCABLE LIVING TRUST

1-8-85
2-15-00

ROBERT R. OLIVER TRUST 1/2 INT. & VENITA OLIVER 1/2 INT.

4-16-70
4-13-04

MILDRED E. VENHORST

3-13-06

DENNIS G. DIERCKS

3-18-87
3-1-06

DONALD M + NANCY F. CLAUSSEN

6-8-92

WAYNE W + HELEN M KRUSE

4-12-94

VOLLBEER, INC

2-24-70
10-20-77 QCD
3-18-81 QCD
2-19-93

200th AVE WEST

210th AVE EAST

250th St SOUTH

Iowa Pub. Co. Des Moines, Iowa.

SCOTT Co. 6-20-63

SCOTT Co. 5-24-63

LEIGH R SYACINA 10-8-94
REV. TRUST 12-21-02
10-23-03

WARRANTY 250th ST
JAMES V. & CAMILLE M. BRAET
7-10-75
20480

25319
DEAN CLAUSSEN

25039

25200
SCOTT Co. 6-20-63

9720
478 NET
248.5

25514

100

127.40 ch

19.63 ch.

91.003

41.0

132.825

77.90 ch.

767.19

182.0

182.0

182.0