

SECTION  
34

Township 80-North; Range 1  
EAST OF THE FIFTH PRINCIPAL MERIDIAN

SCOTT COUNTY, IOWA  
LIBERTY TOWNSHIP

SCALE IN CHAINS



SCALE IN FEET



NORTH

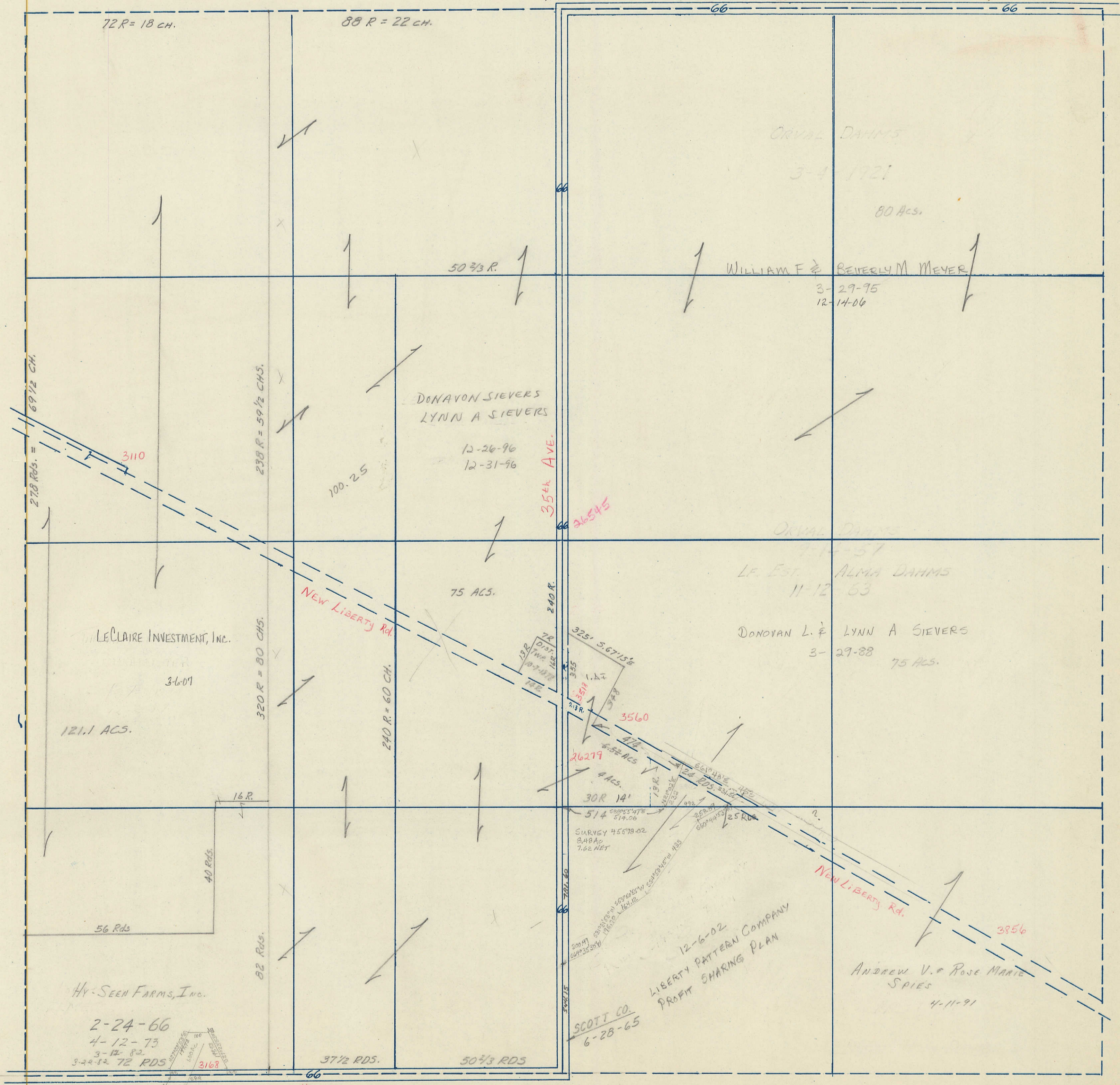
Transfer Page 319

79.94 CH

270th St.

WEST

EAST



72 R = 18 CH.

88 R = 22 CH.

66

66

27 1/2 RDS. = 69 1/2 CH.

238 R = 59 1/2 CHS.

320 R = 80 CHS.

240 R = 60 CH.

240 R.

325' 5.6715'

355

350

318

300

250

200

150

100

50

121.1 ACS.

316-01

56 Rds

40 RDS.

82 RDS.

16 R.

100.25

75 ACS.

5.52 ACS

4 ACS.

30 R 14'

514

SURVEY 45578-02

848 AD

7.62 NET

250

200

150

100

50

DONAVON SIEVERS  
LYNN A SIEVERS

12-26-96  
12-31-96

WILLIAM F & BEVERLY M MEYER

3-29-95  
12-14-00

ORVAL DAHMS  
L.F. EST. ALMA DAHMS

11-12-63

DONOVAN L. & LYNN A SIEVERS

3-29-88

75 ACS.

HY-SEEN FARMS, INC.

2-24-66  
4-12-73  
3-12-82  
3-22-82 72 RDS

3163

37 1/2 RDS.

50 1/3 RDS

SCOTT CO.  
6-28-65

LIBERTY PATTERN COMPANY  
PROFIT SHARING PLAN

ANDREW V. & ROSE MARIE SPIES

4-11-91

260th St.

SOUTH