

SECTION
28

Township 80-North; Range 1

EAST OF THE FIFTH PRINCIPAL MERIDIAN

SCOTT COUNTY, IOWA

LIBERTY TOWNSHIP

SCALE IN CHAINS



SCALE IN FEET



Transfer Page 313

NORTH

280th St.

80.17 CH

20th AVE.

WEST

EAST

66 2065

2765

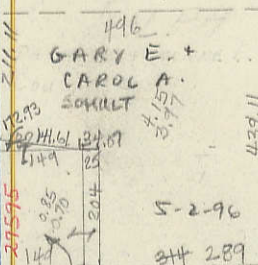
COUSSENS SURVIVOR'S TRUST 1/2 INT
COUSSENS FAMILY TRUST 1/2 INT

8-25-53
8-7-74
3-24-97
10-25-05

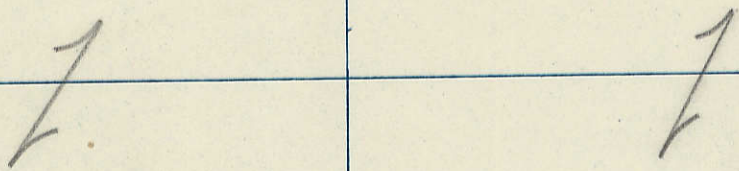
KATHLEEN L. SMITH REVOCABLE TRUST

8-4-43
7-6-84
11-7-86
11-23-98

RALPH J. SIEVERS
2-26-1959
3-25-1967



GARY E. + CAROL A. SCHULT
5-16-05



WILLIAM F. MEYER
BEVERLY MEYER

12-31-96

LE EST. TRUST OF RALPH J. SIEVERS

~~EUGENE + JOYCE~~
VAN DEN BERGHE
3-22-1966
7-27-81
3-12-97
S. 60 RODS N 1/2
12-12-05

SURVIVOR'S TRUST 67%
FAMILY TRUST 33%
4-11-07

~~EUGENE + JOYCE~~
MARI VAN DEN BERGHE
3-2-39
6-2-66
7-27-81
3-12-97
4-18-97
12-12-05
4-11-07

1st SURVIVOR'S TRUST
33rd FAMILY TRUST

MICHAEL L. AUGUST
KAY L. AUGUST
1-5-07

LE CLAIRE
INVESTMENTS
INC
4-16-64

80.10 1/2 CH

SOUTH