

SECTION
22

Township 80-North; Range 1

EAST OF THE FIFTH PRINCIPAL MERIDIAN

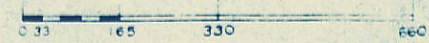
SCOTT COUNTY, IOWA

LIBERTY TOWNSHIP

SCALE IN CHAINS



SCALE IN FEET



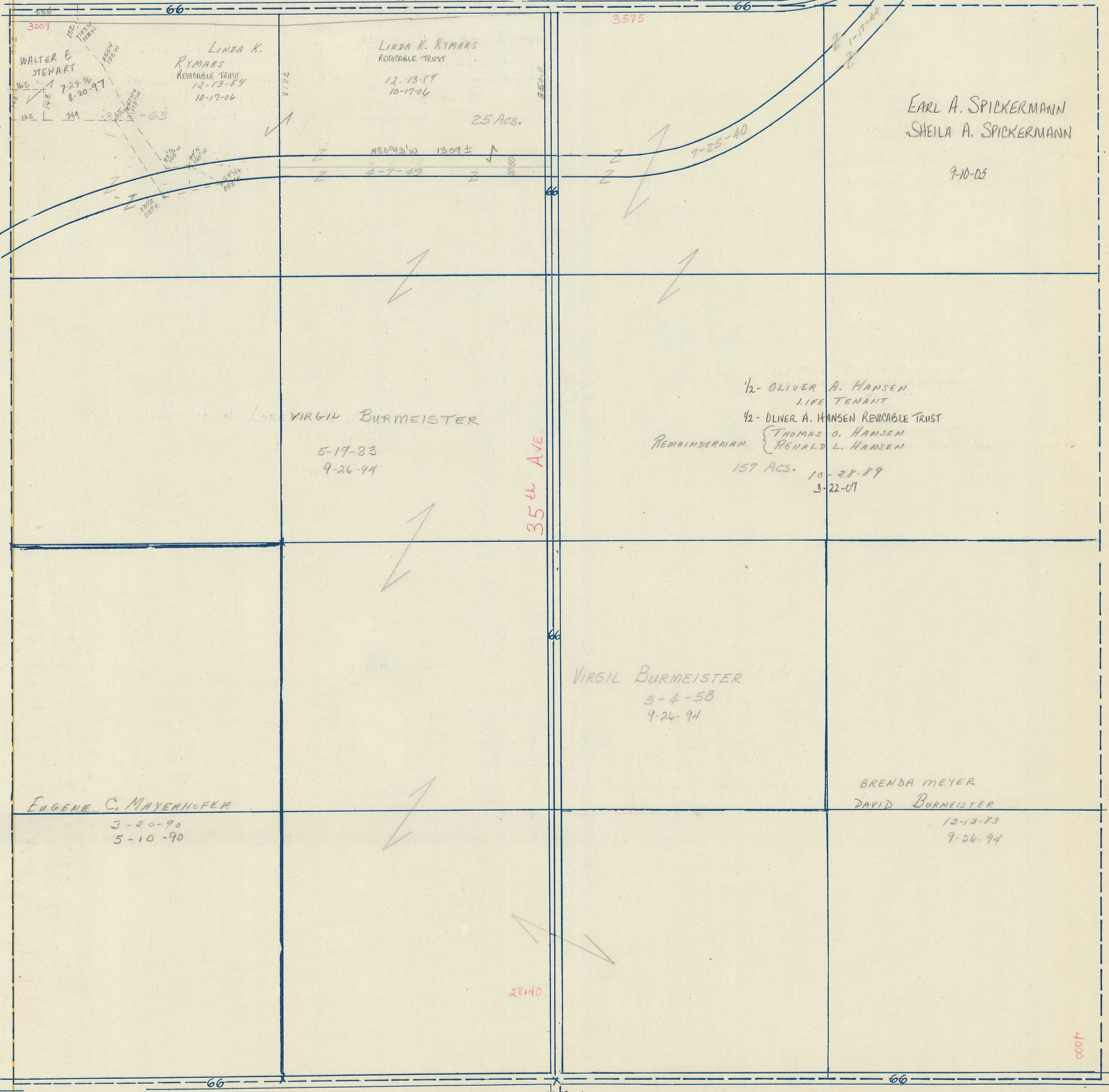
NORTH

Transfer Page 307

290th St.
1304±

79.88 CH

295th St.



3009
WALTER E. STEWART
7-29-96
8-20-97

LINDA K. RYMARS
REVOCABLE TRUST
12-13-84
10-17-06

LINDA K. RYMARS
REVOCABLE TRUST
12-13-84
10-17-06

25 Acs.

N86°43'W 1309±

3575

EARL A. SPICKERMANN
SHEILA A. SPICKERMANN

9-10-05

7-25-40

VIRGIL BURMEISTER

5-19-83
9-26-94

1/2- OLIVER A. HANSEN
LIFE TENANT
1/2- OLIVER A. HANSEN REVOCABLE TRUST
REMAINDERMAN { THOMAS O. HANSEN
RONALD L. HANSEN
157 Acs. 10-28-89
3-22-07

35th Ave.

VIRGIL BURMEISTER
3-4-58
9-26-94

EUGENE C. MAYERHOFFER
3-20-90
5-10-90

BRENDA MEYER
DAVID BURMEISTER
12-13-83
9-26-94

28140

80.18 CH

280th St.

SOUTH

WEST

EAST

600+