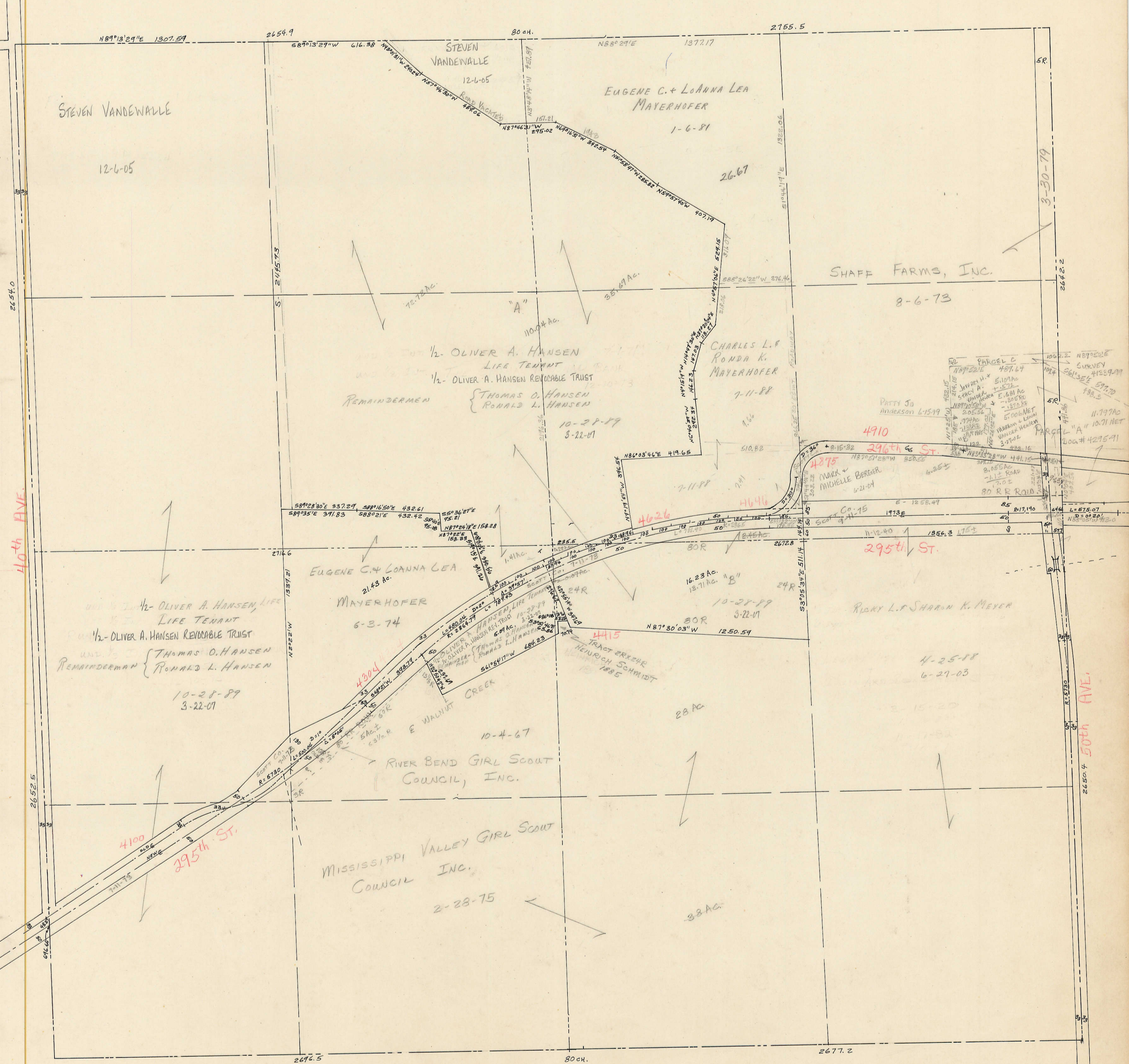


Transfer Page 299 LANDS

SECTION 14, TOWNSHIP 80-N, RANGE 1 EAST OF 5TH P.M.
SCALE: 1" = 330'



40th AVE.

50th AVE.

STEVEN VANDEWALLE
12-6-05

STEVEN
VANDEWALLE
12-6-05

EUGENE C. + LOANNA LEA
MAYERHOFER
1-6-81

SHAFF FARMS, INC.
8-6-73

1/2- OLIVER A. HANSEN
LIFE TENANT
1/2- OLIVER A. HANSEN REVOCABLE TRUST
REMAINDERMEN
THOMAS O. HANSEN
RONALD L. HANSEN
10-28-89
3-22-07

CHARLES L. &
RONDA K.
MAYERHOFER
7-11-88

EUGENE C. + LOANNA LEA
MAYERHOFER
6-3-74

1/2- OLIVER A. HANSEN, LIFE
TENANT
1/2- OLIVER A. HANSEN REVOCABLE TRUST
REMAINDERMAN
THOMAS O. HANSEN
RONALD L. HANSEN
10-28-89
3-22-07

RIVER BEND GIRL SCOUT
COUNCIL, INC.
10-4-67

MISSISSIPPI VALLEY GIRL SCOUT
COUNCIL
INC.
2-28-75

RICKY L. & SHARON K. MEYER
4-25-88
6-27-03

PARCEL C
487.67
SURVEY #12397
577.70
138.3
11.797AC
10.711 NET
LOC # 423591

4910

4875

295th St.

4304

4415

4100

295th St.