

SECTION
10

Township 80-North; Range 1

EAST OF THE FIFTH PRINCIPAL MERIDIAN

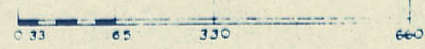
SCOTT COUNTY, IOWA
LIBERTY TOWNSHIP

NORTH

SCALE IN CHAINS



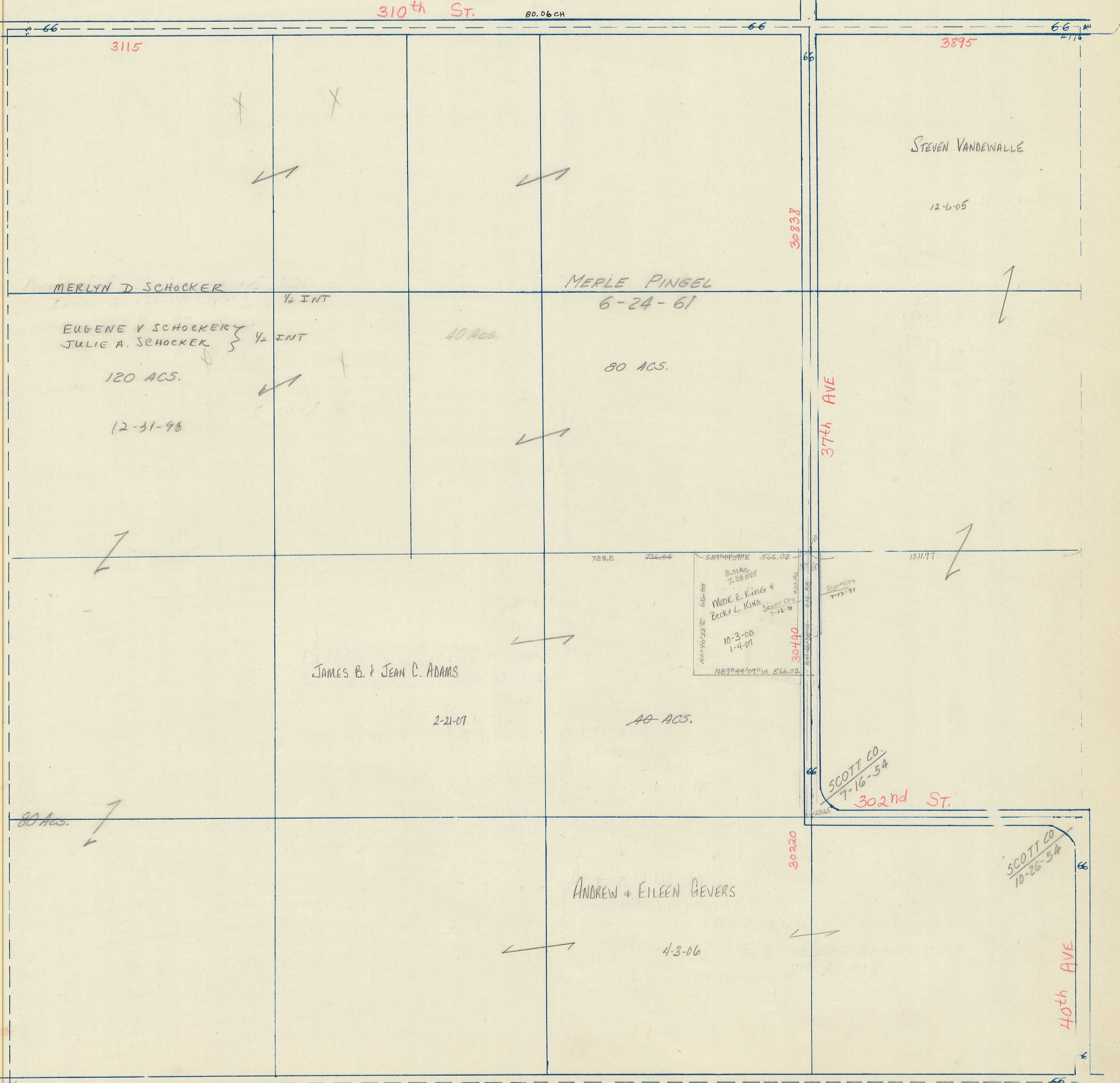
SCALE IN FEET



Transfer Page 295

310th ST.

80.06 CH



3115

3895

MERLYN D. SCHOCKER

MERLE PINGEL

STEVEN VANDEWALLE

EUGENE V. SCHOCKER
JULIE A. SCHOCKER

6-24-61

12-6-05

120 ACS.

40 ACS.

80 ACS.

12-31-98

374th AVE.

JAMES B. & JEAN C. ADAMS

MARK E. KING &
BECKY L. KING
10-3-00
1-4-01

2-21-07

40 ACS.

80 ACS.

SCOTT CO.
7-16-54

302nd ST.

ANDREW & EILEEN GEVERS

SCOTT CO.
10-26-54

4-3-06

40th AVE.

300th ST.

80.05 CH

SOUTH

WEST

EAST