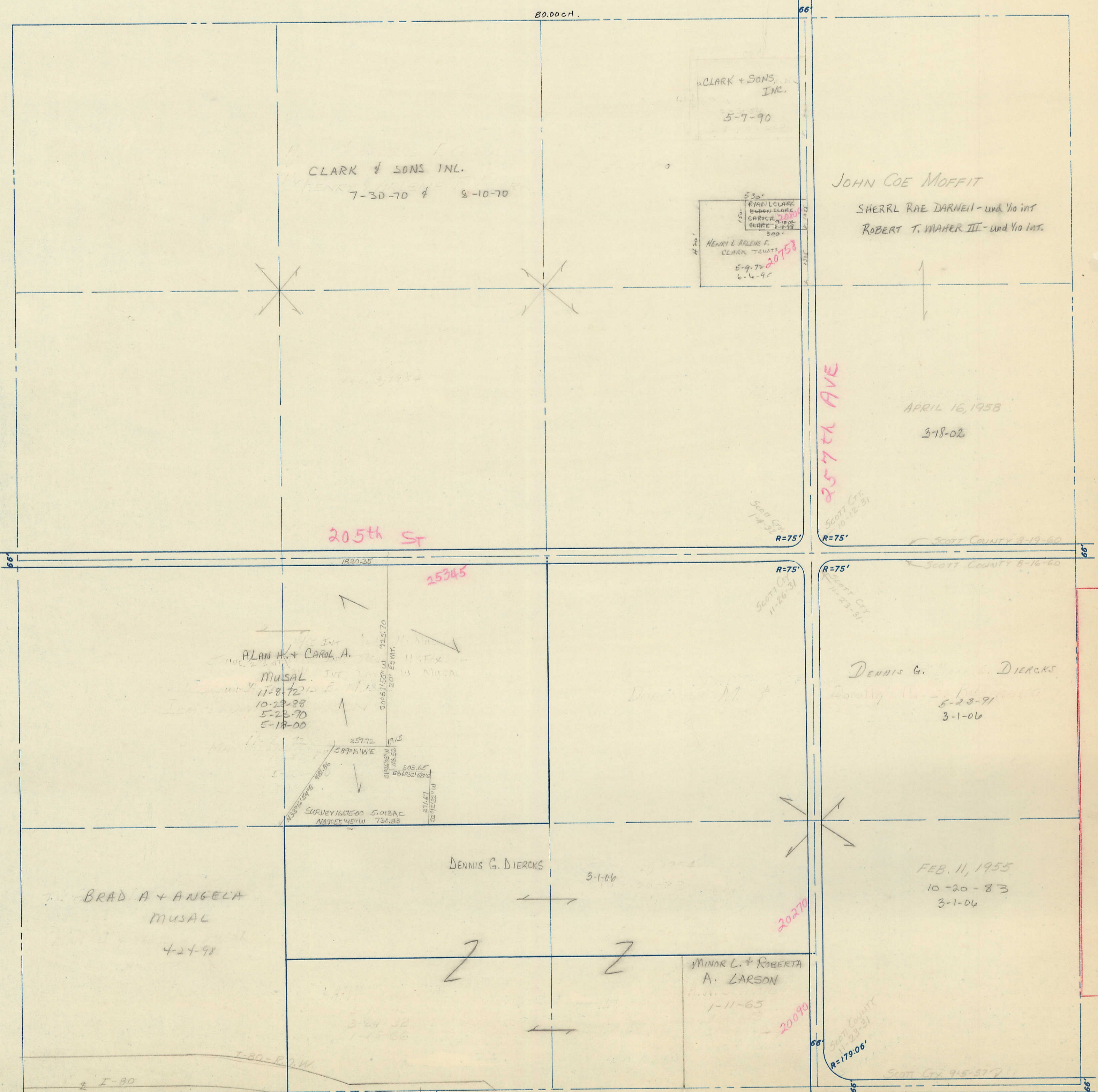


SECTION 32
TOWNSHIP 79 NORTH, RANGE 5 EAST,
5TH PRINCIPAL MERIDIAN
LE CLAIRE TOWNSHIP
SCOTT COUNTY, IOWA

TRANSFER PAGE 282

SCALE: 1 INCH = 330 FEET

SECTION 29 PAGE 16



PAGE 20

SECTION 31

PAGE 22

SECTION 33

32-79-5

SECTION 5, PLEASANT VALLEY TWP.

SECTION NW NE

SECTION 5 PAGE 28

WISCONSIN ST.