

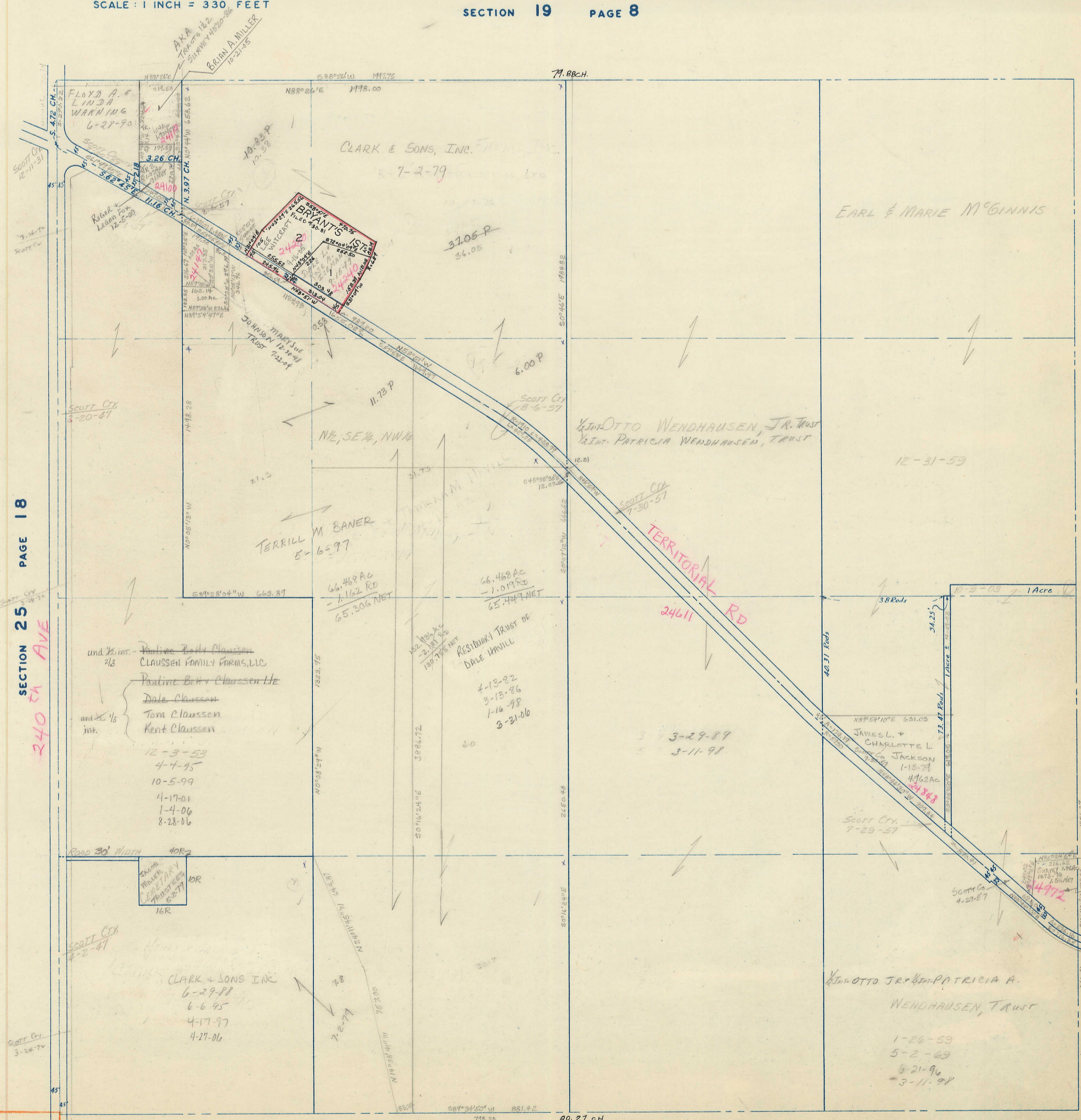
SECTION 30
TOWNSHIP 79 NORTH, RANGE 5 EAST,
5TH PRINCIPAL MERIDIAN
LE CLAIRE TOWNSHIP
SCOTT COUNTY, IOWA

TRANSFER PAGE 280

SCALE: 1 INCH = 330 FEET

SECTION 19 PAGE 8

30



SECTION 25 PAGE 18

240TH AVE

SECTION 29 PAGE 16

SECTION 31 PAGE 20