

SCALE: 1 INCH = 330 FEET

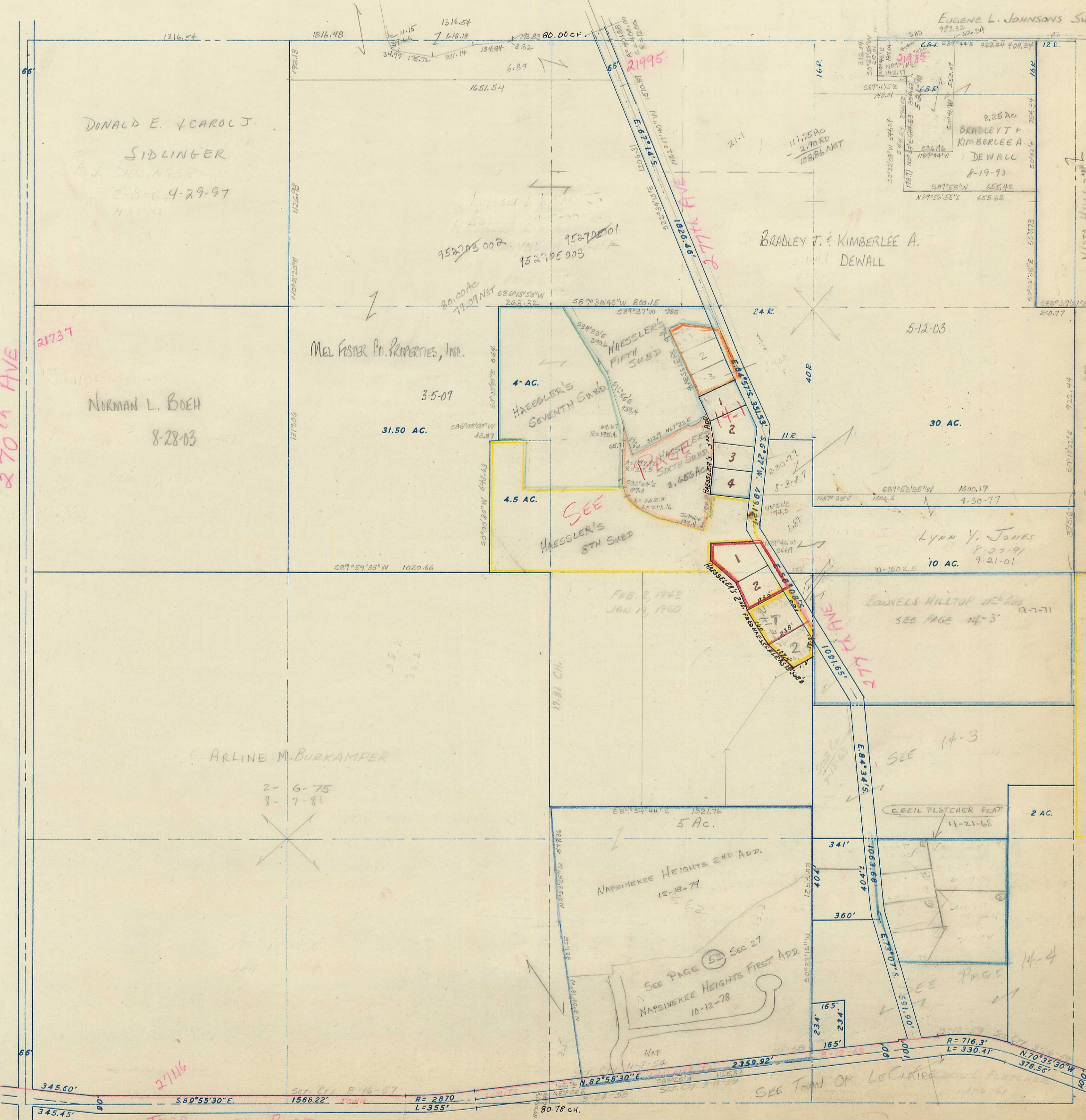
SECTION 27
TOWNSHIP 79 NORTH, RANGE 5 EAST,
5TH PRINCIPAL MERIDIAN
LE CLAIRE TOWNSHIP
SCOTT COUNTY, IOWA

TRANSFER PAGE 277

SECTION 22 PAGE 11

SECTION 28 PAGE 15
PAGE 15
270th AVE

SECTION 26 PAGE 13
PAGE 13-4
SEE COURTESY HILLTOP 300



TERRITORIAL ROAD

SECTION 34 PAGE 23

LC