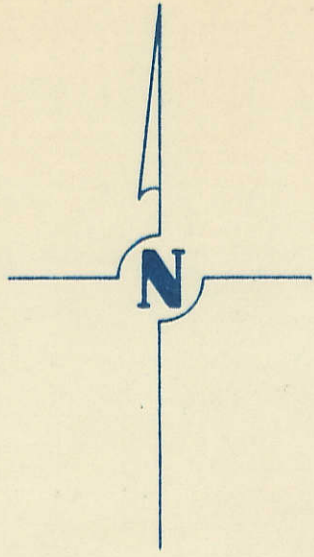


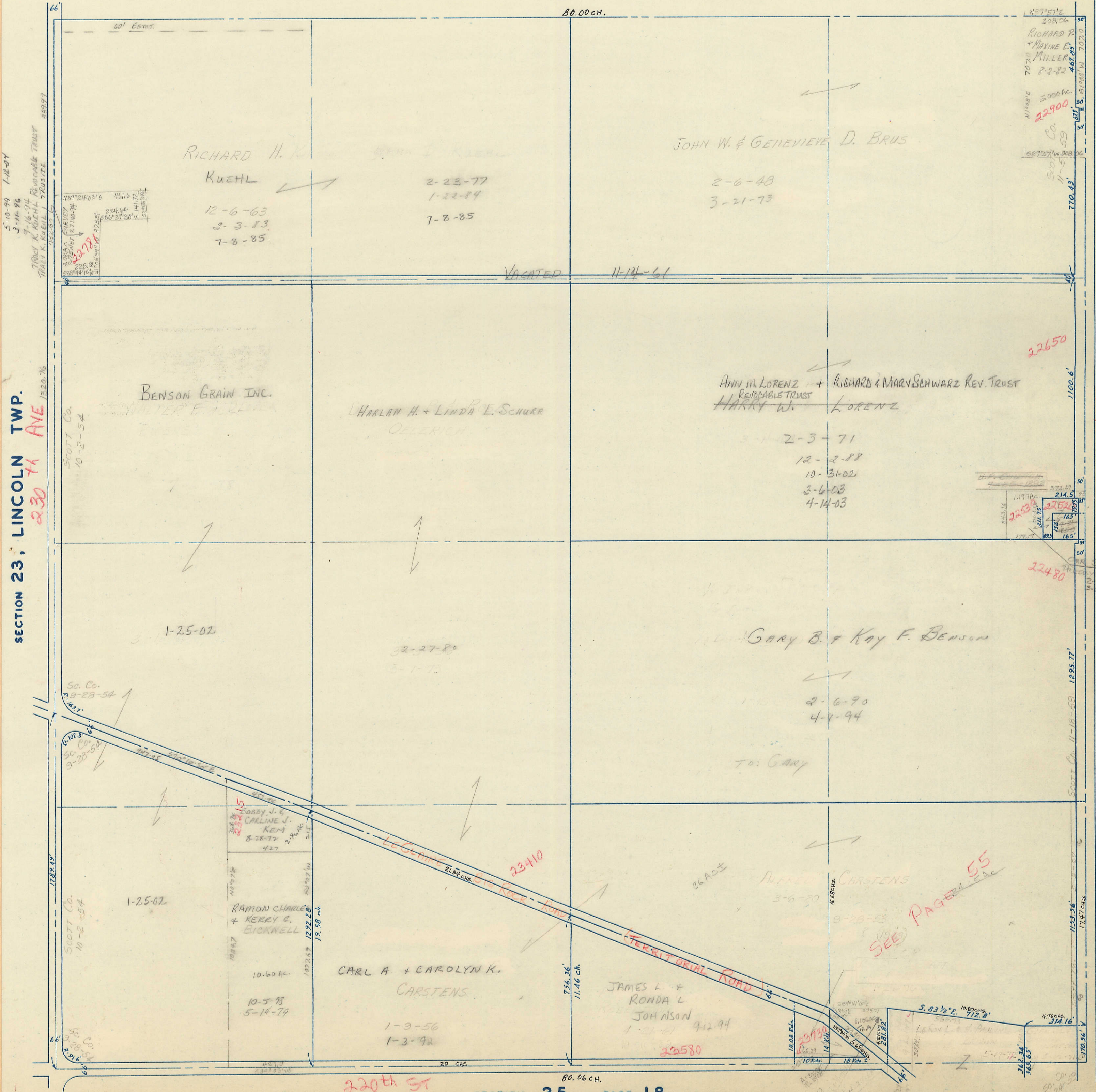
SECTION 24
TOWNSHIP 79 NORTH, RANGE 4 EAST,
5TH PRINCIPAL MERIDIAN
LE CLAIRE TOWNSHIP
SCOTT COUNTY, IOWA

TRANSFER PAGE 259



SCALE: 1 INCH = 330 FEET

SECTION 13 PAGE 6



240th AVE

SECTION 19 PAGE 8

78

SECTION 23; LINCOLN TWP.
230th AVE

SECTION 25 PAGE 18