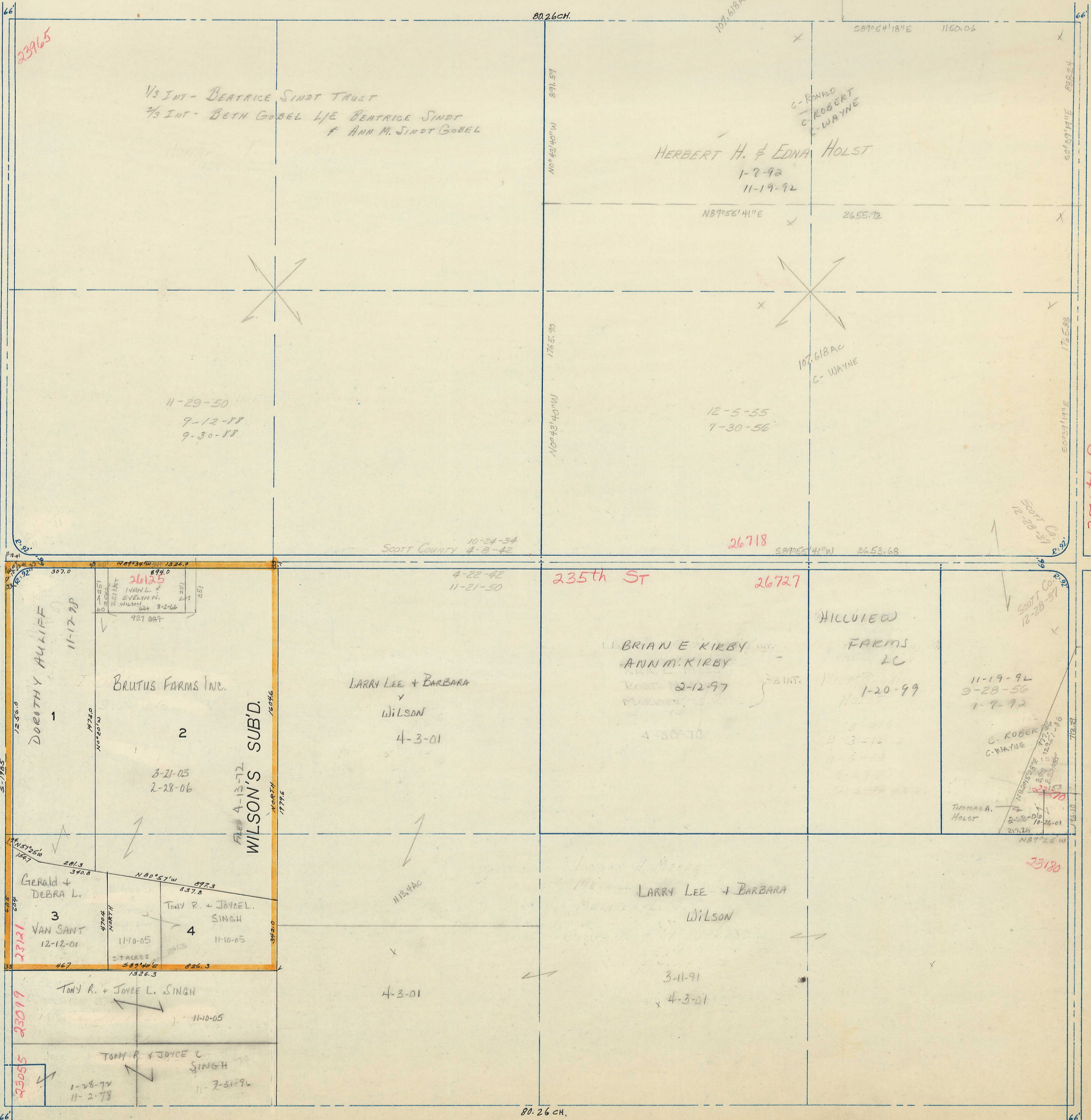


SECTION 16
TOWNSHIP 79 NORTH, RANGE 5 EAST,
5TH PRINCIPAL MERIDIAN
LE CLAIRE TOWNSHIP
SCOTT COUNTY, IOWA

TRANSFER PAGE 268

SCALE: 1 INCH = 330 FEET

SECTION 9, PRINCETON TWP.



SECTION 17
PAGE 4
TRANSFER PAGE 1377Z.
260th AVE

SECTION 15
PAGE 2
270th AVE