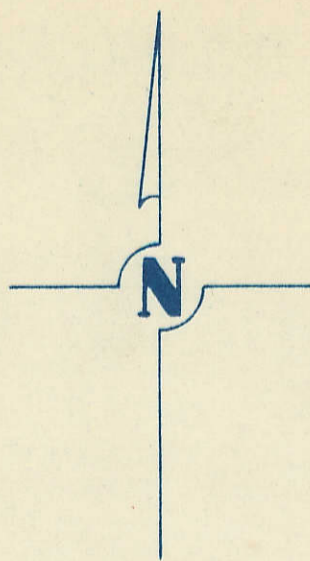


SECTION 13
TOWNSHIP 79 NORTH, RANGE 4 EAST.
5TH PRINCIPAL MERIDIAN
LE CLAIRE TOWNSHIP
SCOTT COUNTY, IOWA

TRANSFER PAGE 258

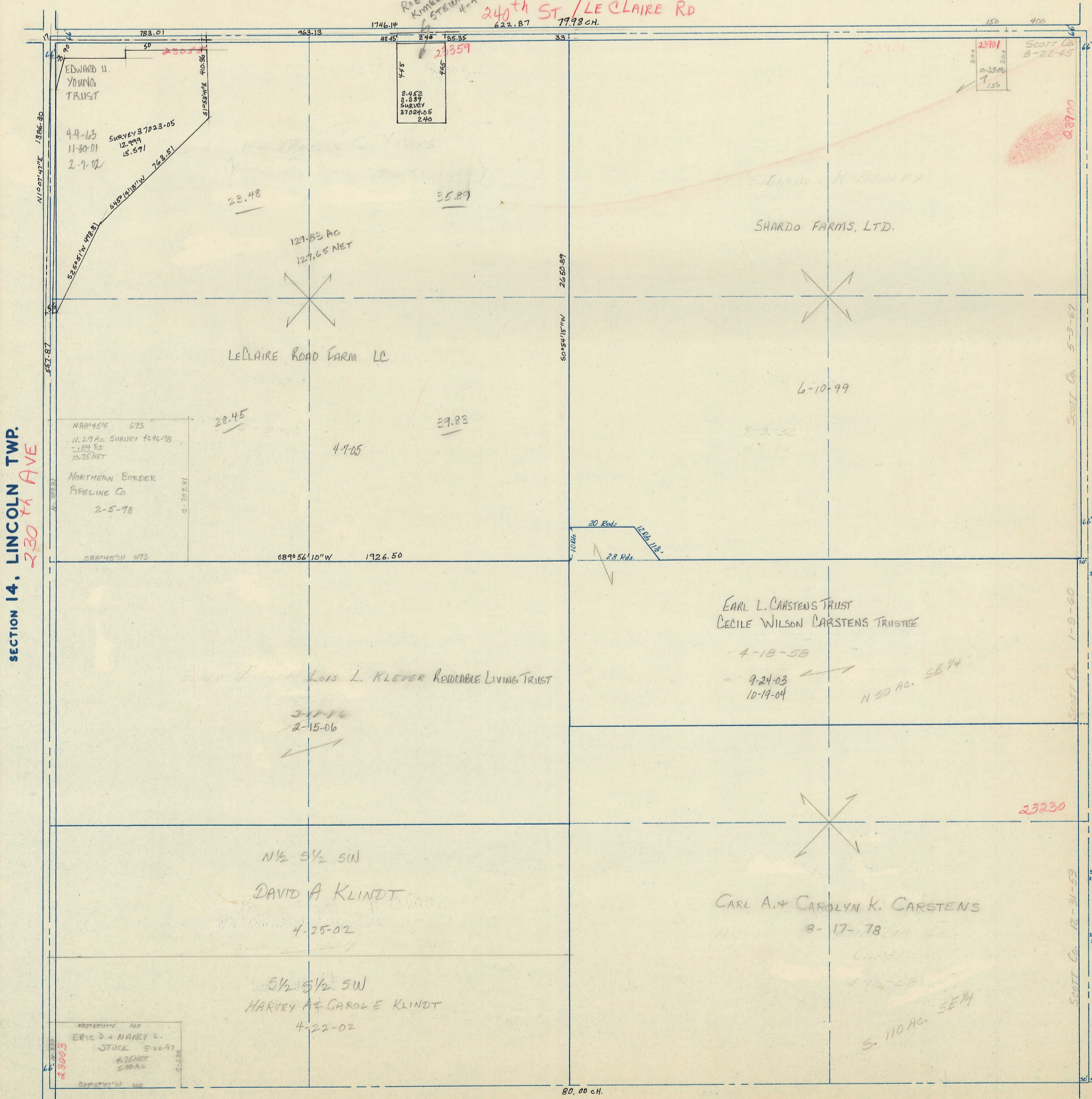


SCALE: 1 INCH = 330 FEET

SECTION 12, PRINCETON TWP.

ROBERT H STEWART III
KIMBERLY R STEWART
4-4-05

240TH ST / LE CLAIRE RD
622.87 79.98 CH.



SECTION 14, LINCOLN TWP.
230TH AVE

240TH AVE
PAGE 5

SECTION 18