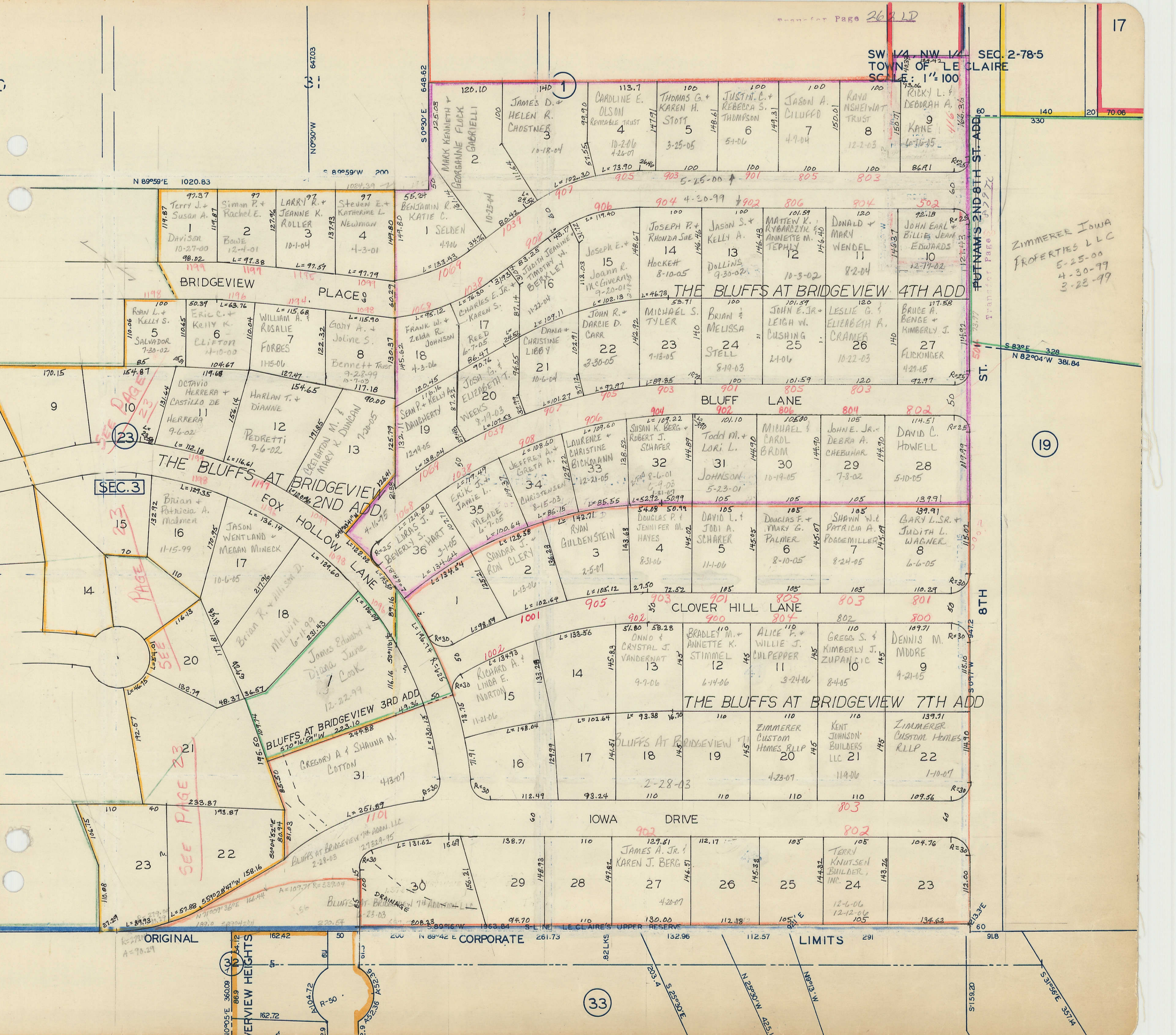


SW 1/4 NW 1/4 SEC. 2-78-5
TOWN OF LE CLAIRE
SCALE: 1" = 100'



ZIMMERER IOWA PROPERTIES LLC
5-25-00
4-30-99
3-23-99

PUTNAM'S 2ND-8TH ST. ADD
ST.

S 83° E 328
N 82° 04' W 381.84

19

8TH

60

33

SEC. 3

SEE PAGE 23

SEE PAGE 23

SEE PAGE 23

ORIGINAL CORPORATE LIMITS

VERVIEW HEIGHTS

VERVIEW HEIGHTS

VERVIEW HEIGHTS

VERVIEW HEIGHTS

THE MOORINGS, A CONDOMINIUM
#24980-94 LOT 1 CANAL SHORE 33A
COMMONS - CHARLES A RUHL 8-24-94
CHARLES A RUHL JR

| UNIT | |
|------|--|
| 1 | Richard A. + JoAnn M. Hook 8-23-99 |
| 2 | CAROL J. LOBB 8-27-99 |
| 3 | MICHAEL E. COUCH TRUST 9-22-04 10/15/01 857 CANAL SHORE DR. |
| 4 | JOHN G. + KATHLEEN D. RYAN 6-27-03 |