

NE 1/4, SE 1/4 SEC. 34-79-5  
TOWN OF LE CLAIRE  
SCALE: 1"=100'

(23)

SEE DISTRICT COURT CAUSE # 31991  
D.L. 2, 7, 10, 15 VACATED

16.97 CHS. 11 LKS. 33 OLD HOLLAND N-LINE LE CLAIRE'S UPPER RESERVE CORPORATE STREET LIMITS

750 50 1949 3435 680

3 4.18 Ac.  
BRUCE R. & ROSE I RICHARDSON 2004 REVOCABLE TRUST  
11-7-03  
8-17-05

6 5.14 Ac.

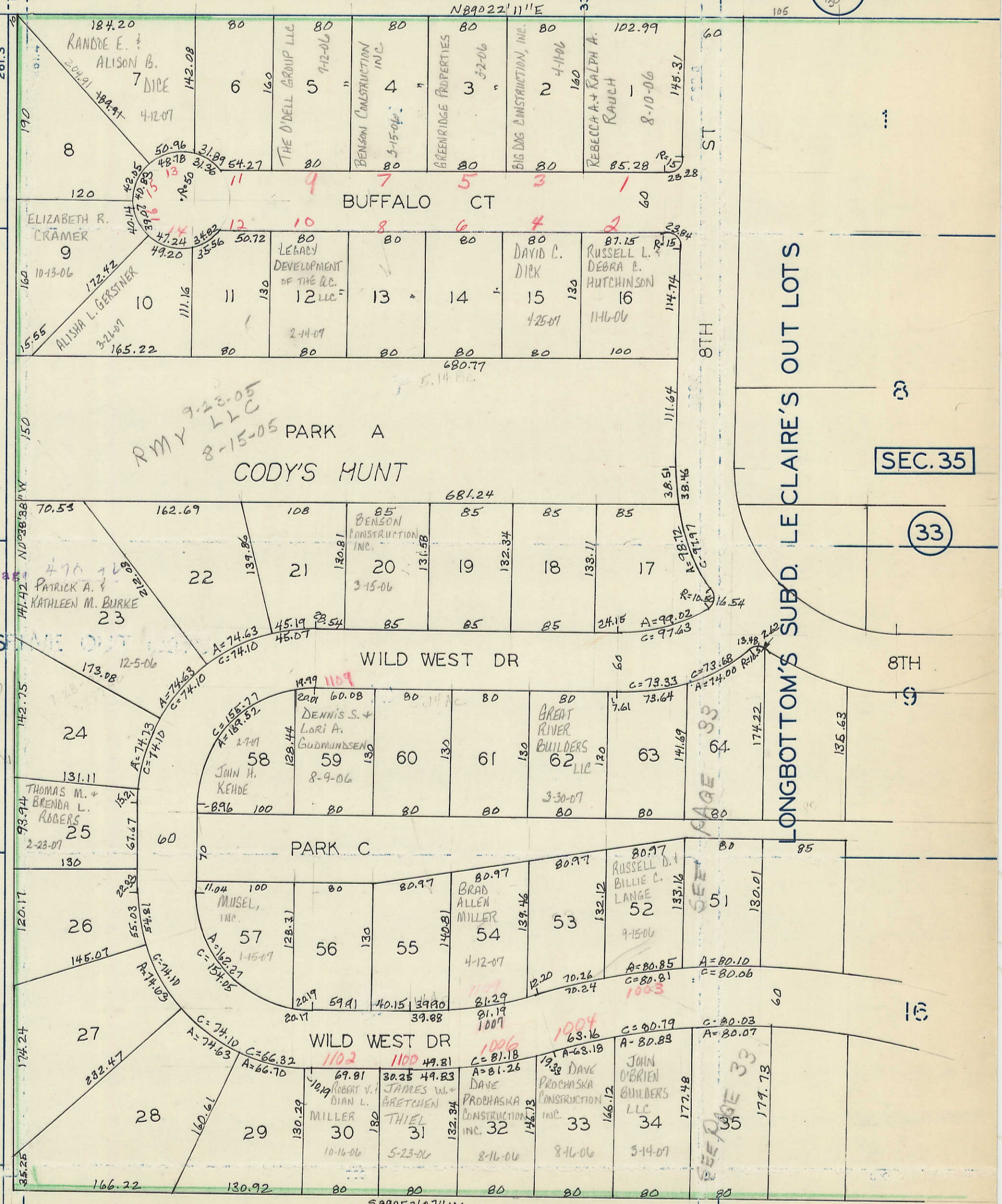
(37)

A. LE CLAIRE'S RES

11 5.14 Ac.

14 5.14 Ac.

19 5.14 Ac.



SEC. 35

(33)

LONGBOTTOM'S SUBD. LE CLAIRE'S

8TH

16

(55)

18 5.14 Ac.

17

261

320.5

320.5

19.89 CHS.

16.97 CHS.

11-7-03  
8-17-05

HOLLAND

N-LINE LE CLAIRE'S UPPER RESERVE CORPORATE STREET LIMITS

N89°22'11"E

8TH ST

BUFFALO CT

WILD WEST DR

PARK C

WILD WEST DR

(55)

18 5.14 Ac.

17

261

320.5

320.5

19.89 CHS.

16.97 CHS.

11-7-03  
8-17-05

HOLLAND

N-LINE LE CLAIRE'S UPPER RESERVE CORPORATE STREET LIMITS

N89°22'11"E

8TH ST

BUFFALO CT

WILD WEST DR

PARK C

WILD WEST DR