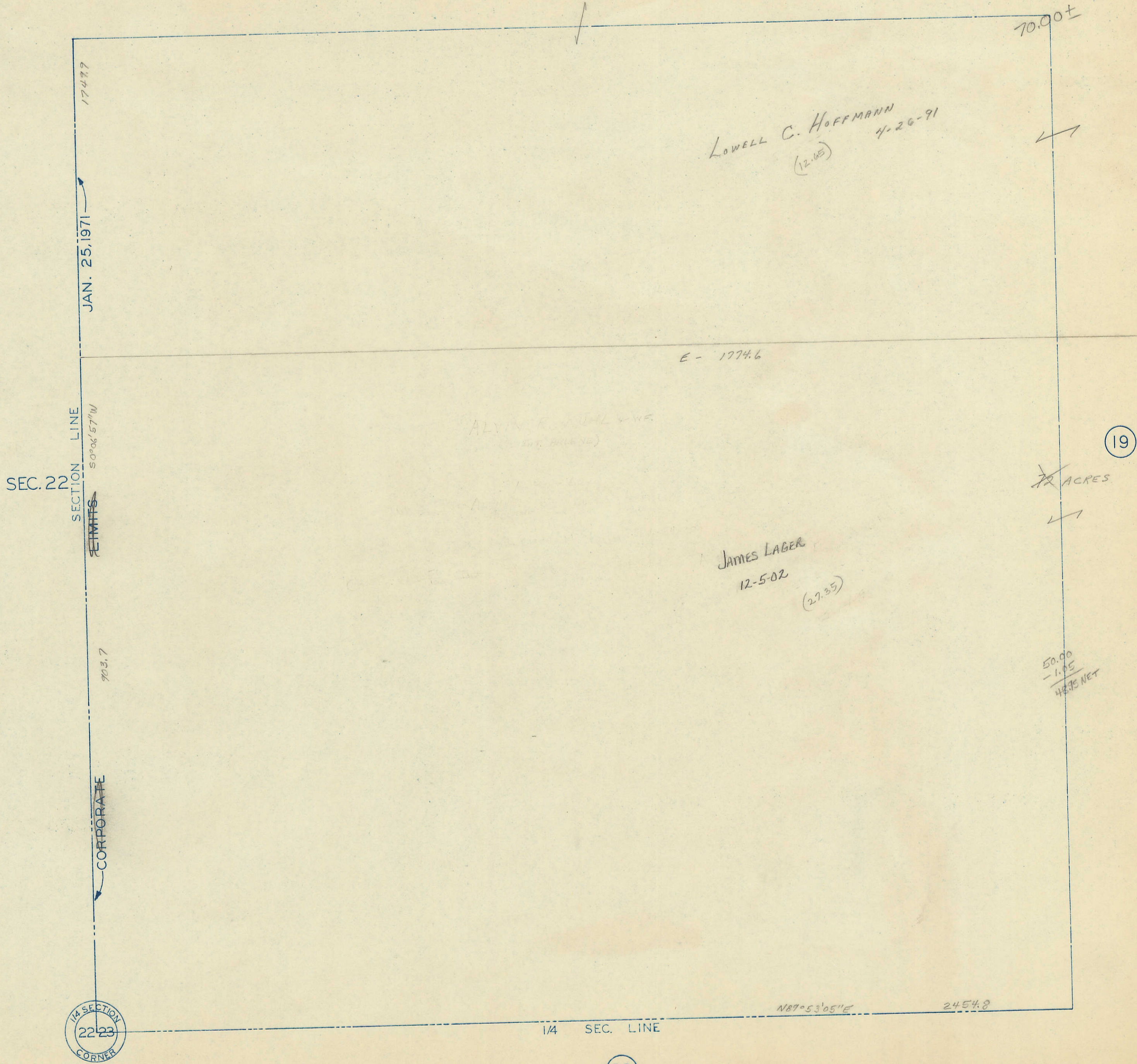


TRANSFER PAGE _____
SW 1/4 NW 1/4 SEC. 23-79-3
TOWN OF ELDRIDGE
SCALE: 1" = 100'

1



1/4 SECTION
22-23
CORNER

33

19

LOWELL C. HOFFMANN
(12.65) 4-26-91

ALVIN E. BIAL V.W.F.
(12.65)

JAMES LABER
12-5-02
(27.35)

~~72~~ ACRES

50.00
- 1.05
48.95 NET

70.00 ±

E - 1774.6

1749.7

JAN. 25, 1971

SECTION LINE
S 0° 06' 57\"/>

ETIMTS

903.7

CORPORATE

1/4 SEC. LINE

N 87° 53' 05\"/>

2454.8