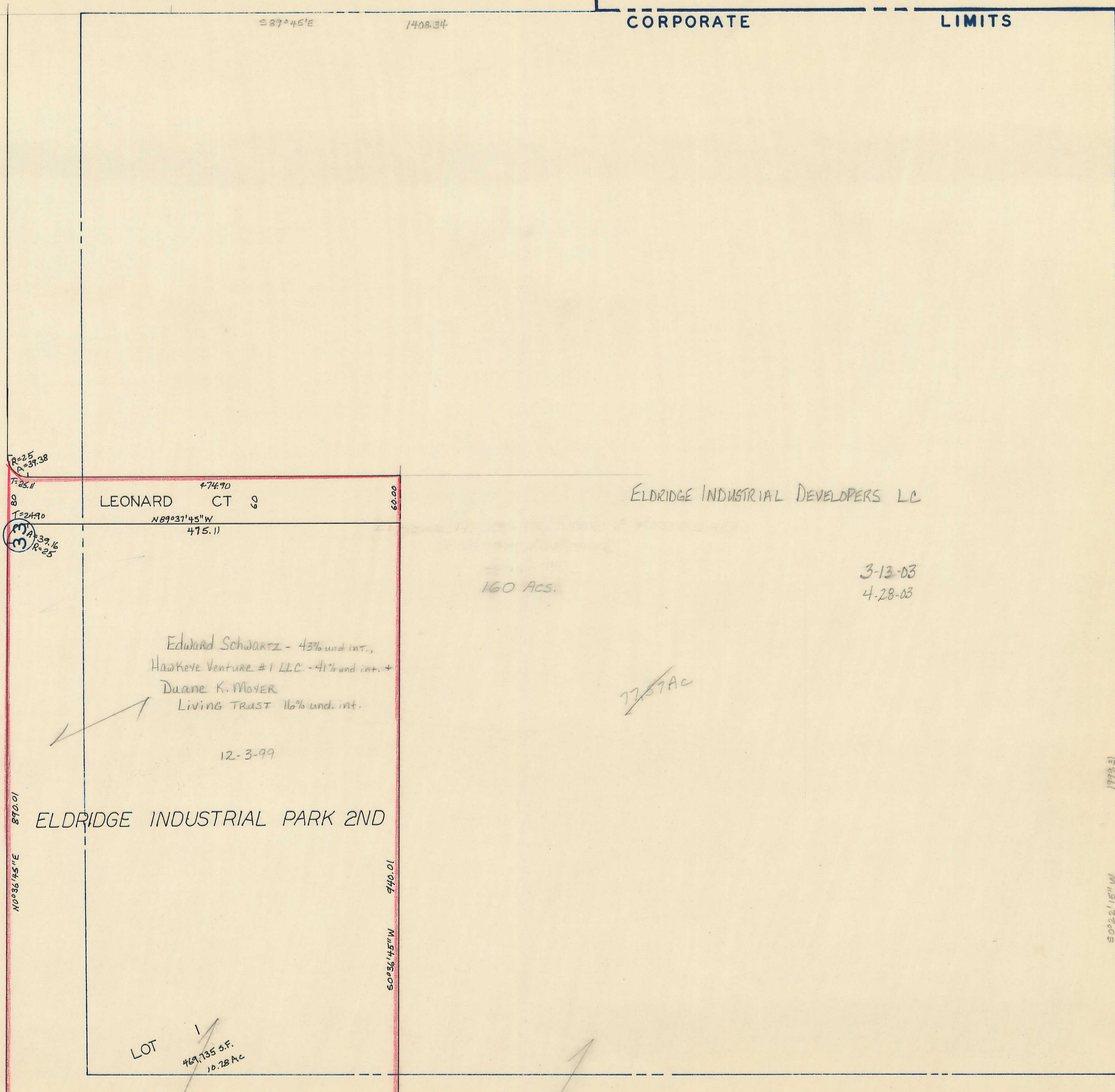


19

TRANSFER PAGE 436 LANDS

CORPORATE LIMITS



R=25
A=37.38
T=25.11
8
T=24.90
3
A=39.16
R=25

474.90
LEONARD CT 60
N89°31'45"W
475.11

ELDRIDGE INDUSTRIAL DEVELOPERS LC

160 ACS.

3-13-03
4-28-03

Edward Schwartz - 43% und. int.,
HawkEye Venture #1 LLC - 41% und. int. +
Duane K. MOYER
Living TRUST 16% und. int.

12-3-99

ELDRIDGE INDUSTRIAL PARK 2ND

LOT 1
469,735 S.F.
10.72 AC

37

51