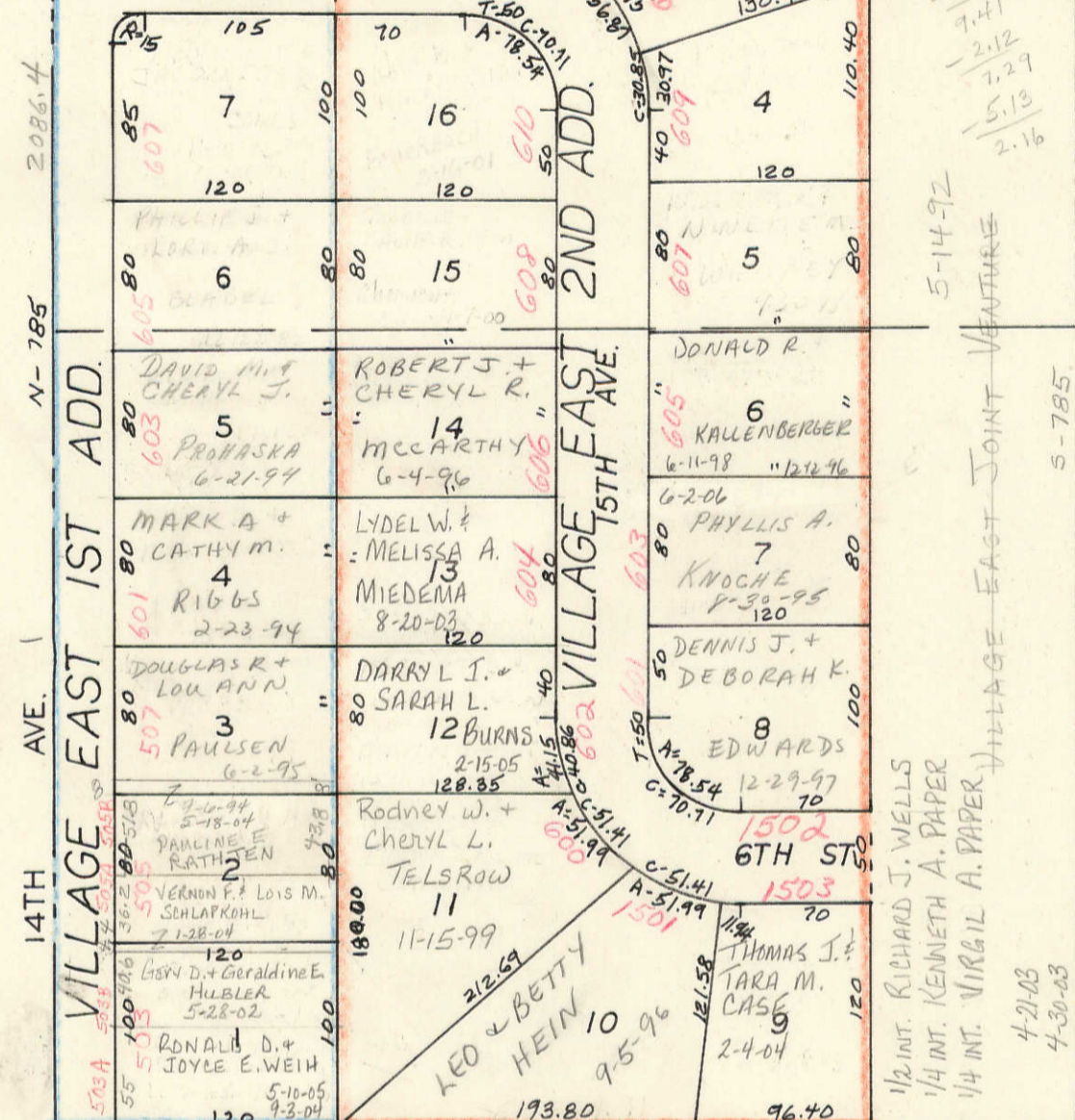


SW 1/4, SW 1/4 SEC. 31-79-1
SCALE: 1"=100'

33

SEC. 36-79-1 CEDAR COUNTY
CITY OF DURANT



UND 3/4 INT: ROLAND H. PAULSON
 UND 1/4 INT: ELWYN L. WEIBLE
 6-10-75
 8-23-88
 3-24-89
 4-15-92

SEE SEC. 31 CLEONA TWP.

