

Sec 12-80-1

SEE ALSO BERTY TOWNSHIP SECTION 12

5.80ch. = 383

4.91ch. = 324.06

Dexter V. Gibson Trust and 1/2 int.  
DOROTHY A. GIBSON and 1/2 int.  
5-22-72  
11-10-99  
8-24-00

SEC. 7-80-2  
49

Transfer Page 306 TL

ORIGINAL TOWN OF DIXON

DAVENPORT

TOWN OF DIXON

Transfer Page 307 TL

VINE ST.

Transfer Page 307 TL

ST.

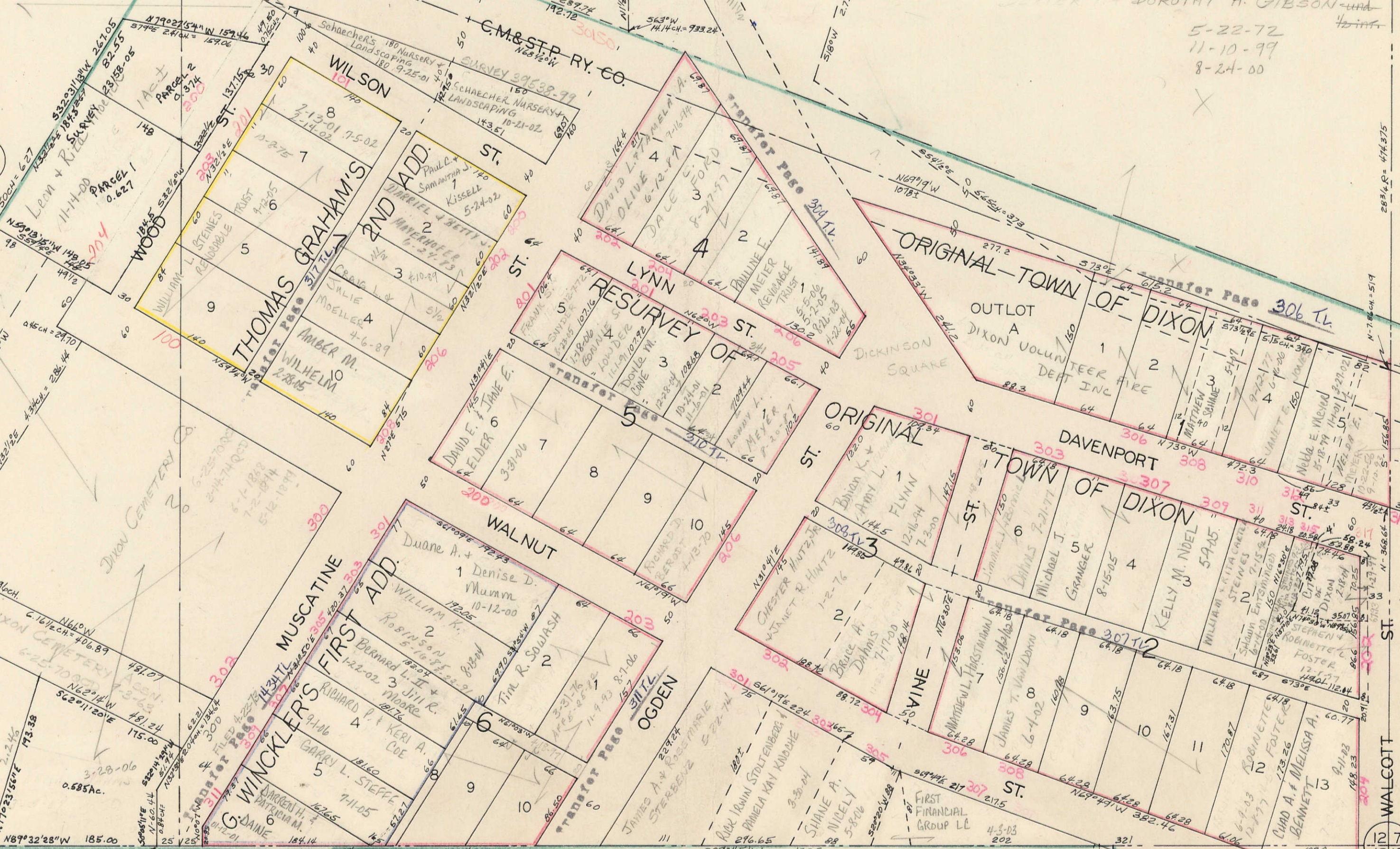
ST.

ST.

ST.

ST.

ST.



SEC. 13-80-1 07