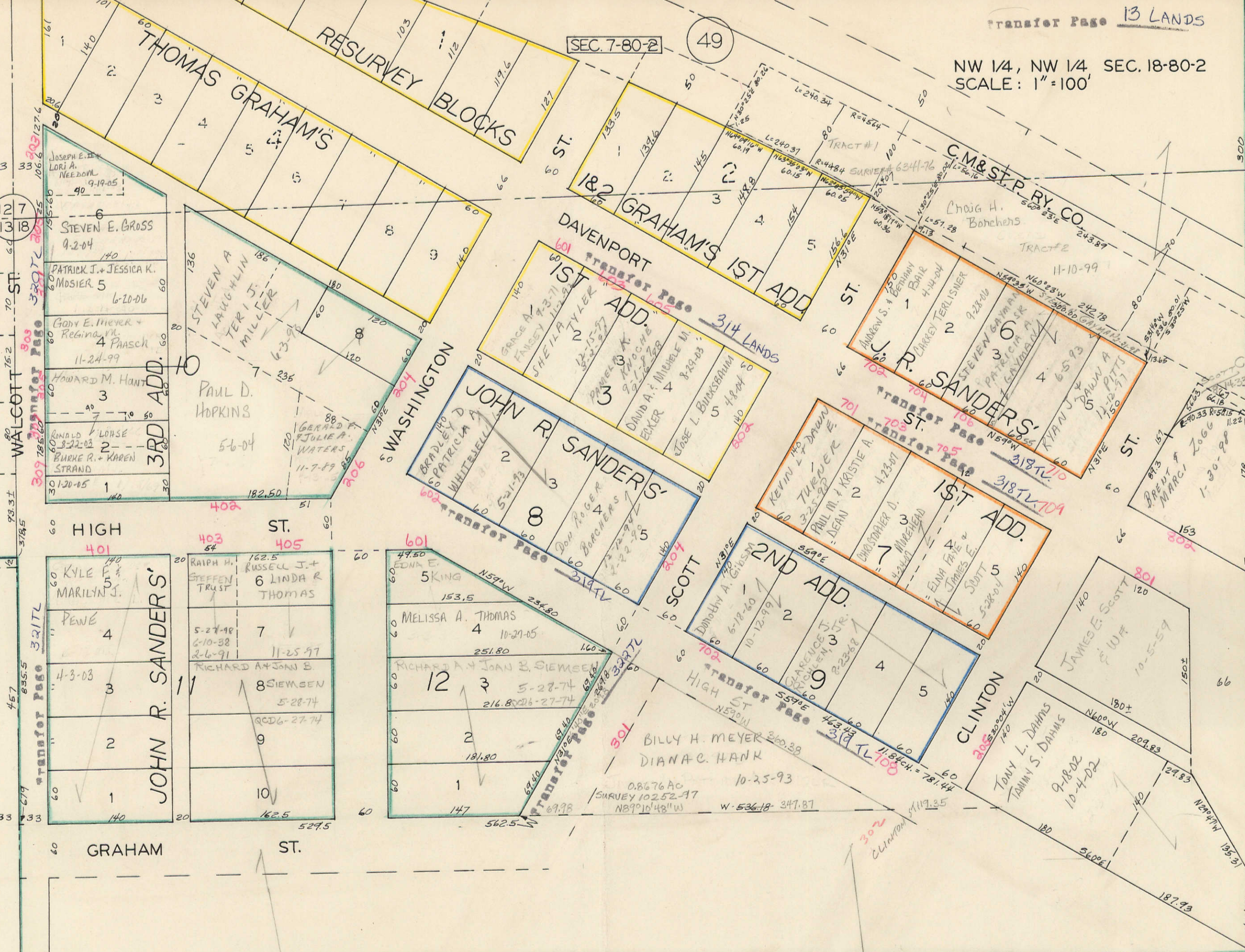


NW 1/4, NW 1/4, SEC. 18-80-2
SCALE: 1"=100'

SEC. 7-80-2

49



WALNUT ST.

WALCOTT ST.

HIGH ST.

GRAHAM ST.

WASHINGTON ST.

C.M. & ST. P. RY. CO.

JOHN R. SANDERS'

2ND ADD.

CLINTON ST.

TO DAVENPORT

SEC. 13-80-1

07

Sec 18-80-2

SEE ALSO ALLENS GROVE TOWNSHIP SECTION 18