

SECTION 6

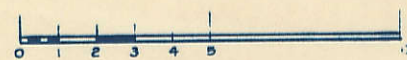
Township 79-North; Range 1

EAST OF THE FIFTH PRINCIPAL MERIDIAN

SCOTT COUNTY, IOWA

CLEONA TOWNSHIP

SCALE IN CHAINS



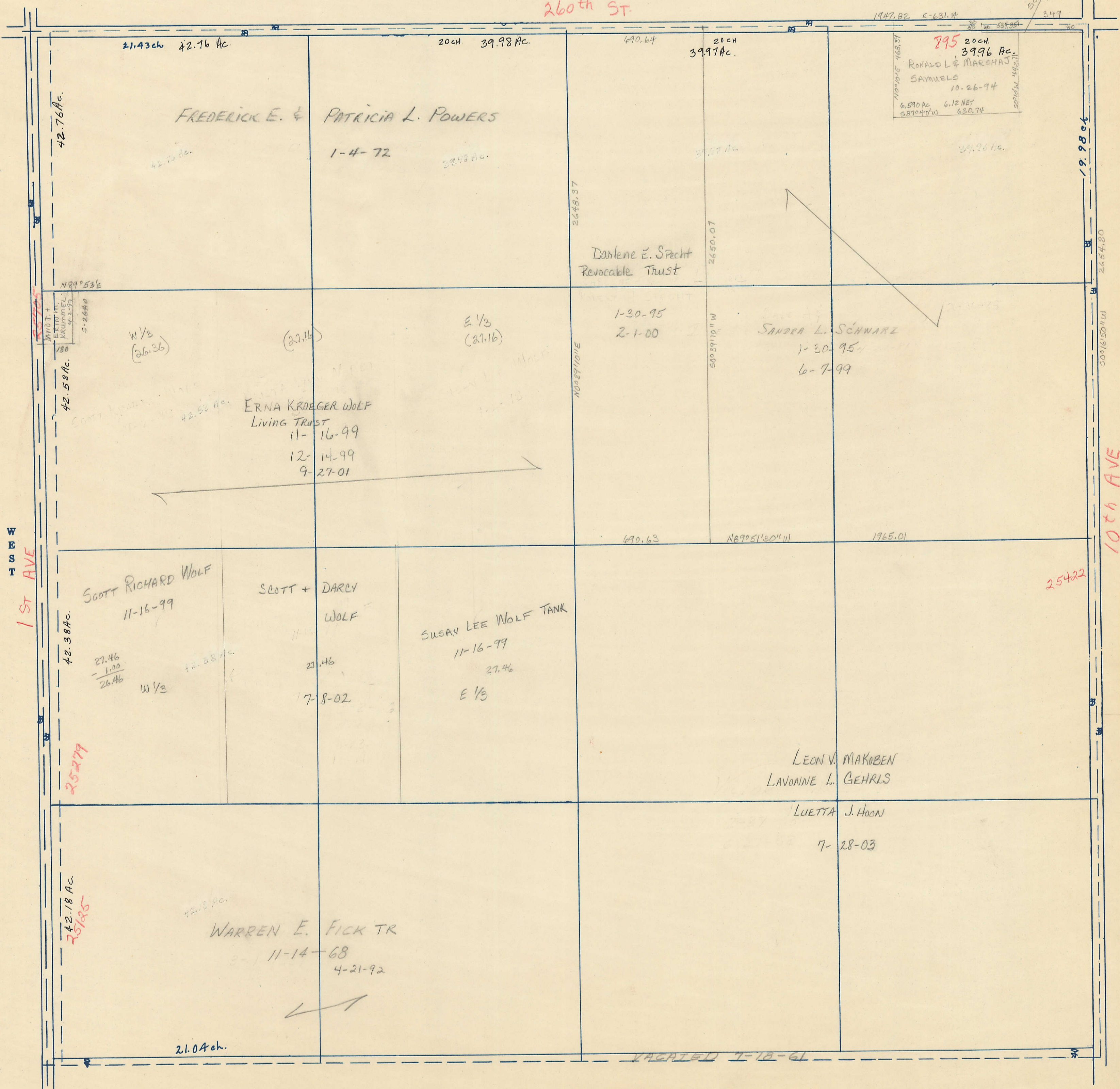
SCALE IN FEET



Transfer Page 139

NORTH

260th St.



WEST

1st Ave

EAST

10th Ave

SOUTH

21.43 ch 42.76 Ac.

20 ch. 39.98 Ac.

690.64 20 ch 39.97 Ac.

895 20 ch. 39.96 Ac. RONALD L & MARSHAL SAMUELS 10-26-94

FREDERICK E. & PATRICIA L. POWERS

1-4-72

Darlene E. Spacht Revocable Trust

1-30-95

2-1-00

SANDRA L. SCHWARZ

1-30-95

6-7-99

W 1/3 (20.36)

(20.16)

E 1/3 (20.16)

ERNA KROEGER WOLF

Living TRUST

11-16-99

12-14-99

9-27-01

SCOTT RICHARD WOLF 11-16-99

SCOTT + DARCY WOLF

SUSAN LEE WOLF TANK

11-16-99

27.46

17-8-02

E 1/3

LEON V. MAKOBEN LAVONNE L. GEHRLS

LUETTA J. HOON

7-28-03

WARREN E. FICK TR

11-14-68

4-21-92

21.04 ch.

VACATED 7-18-61

25422

SCOTT 0.76 3-4-76

19.98 ch

2644.80

50916.50

50916.50

5

5

5

5

5

INDENT + EXTENT KRUMHOLTZ 4-3-97 5-26-98

42.58 Ac.

42.38 Ac.

25279

42.18 Ac. 20185

21.04 ch.