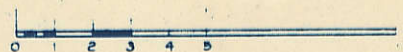


SECTION
34

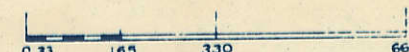
SCALE IN CHAINS



Township 79-North; Range 1

EAST OF THE FIFTH PRINCIPAL MERIDIAN

SCALE IN FEET



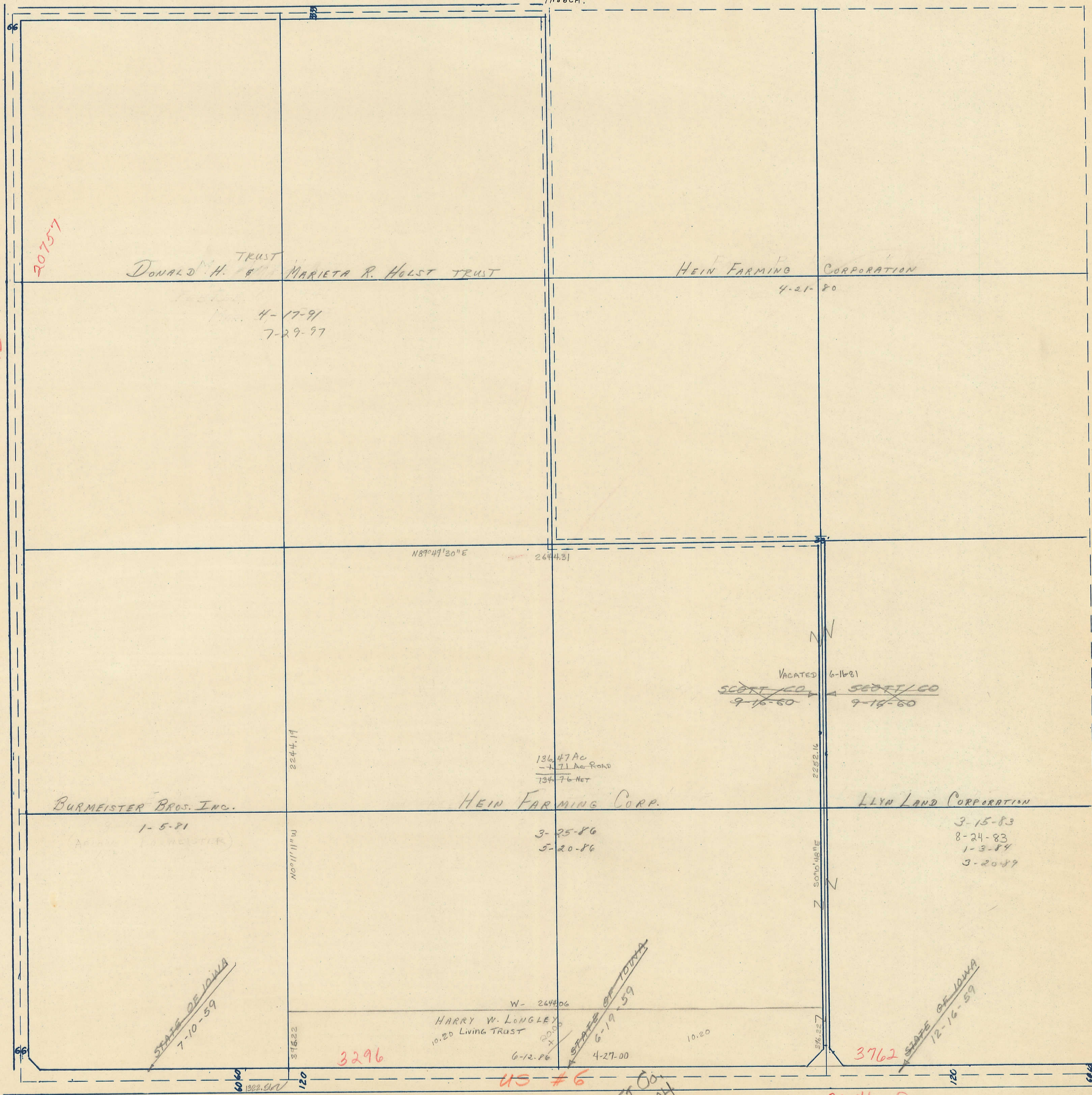
SCOTT COUNTY, IOWA
CLEONA TOWNSHIP

NORTH

Transfer Tax 167

210th ST

77.86 CH.



20757

30th AVE

WEST

EAST

DONALD H. TRUST
MARIETA R. HOLST TRUST
4-17-91
7-29-97

HEIN FARMING CORPORATION
4-21-80

N89°49'30"E
2644.31

VACATED
~~SCOTT CO. 9-16-50~~
~~SCOTT CO. 9-16-50~~

BURMEISTER BROS. INC.
1-5-81

HEIN FARMING CORP.
3-25-86
5-20-86

LYNN LAND CORPORATION
3-15-83
8-24-83
1-3-84
3-20-89

136.47 AC
- 7.71 AC ROAD
128.76 NET

STATE OF IOWA
7-10-59

HARRY W. LONGLEY
10.20 Living TRUST
6-12-86

STATE OF IOWA
6-19-59

STATE OF IOWA
12-16-59

200th ST.

US #6

SCOTT CO.
11-3-04

200th ST

SOUTH