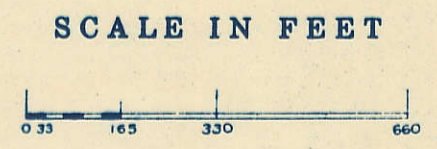


SECTION 22

Township 79-North; Range 1  
EAST OF THE FIFTH PRINCIPAL MERIDIAN

SCOTT COUNTY, IOWA  
CLEONA TOWNSHIP



Transfer Page 155

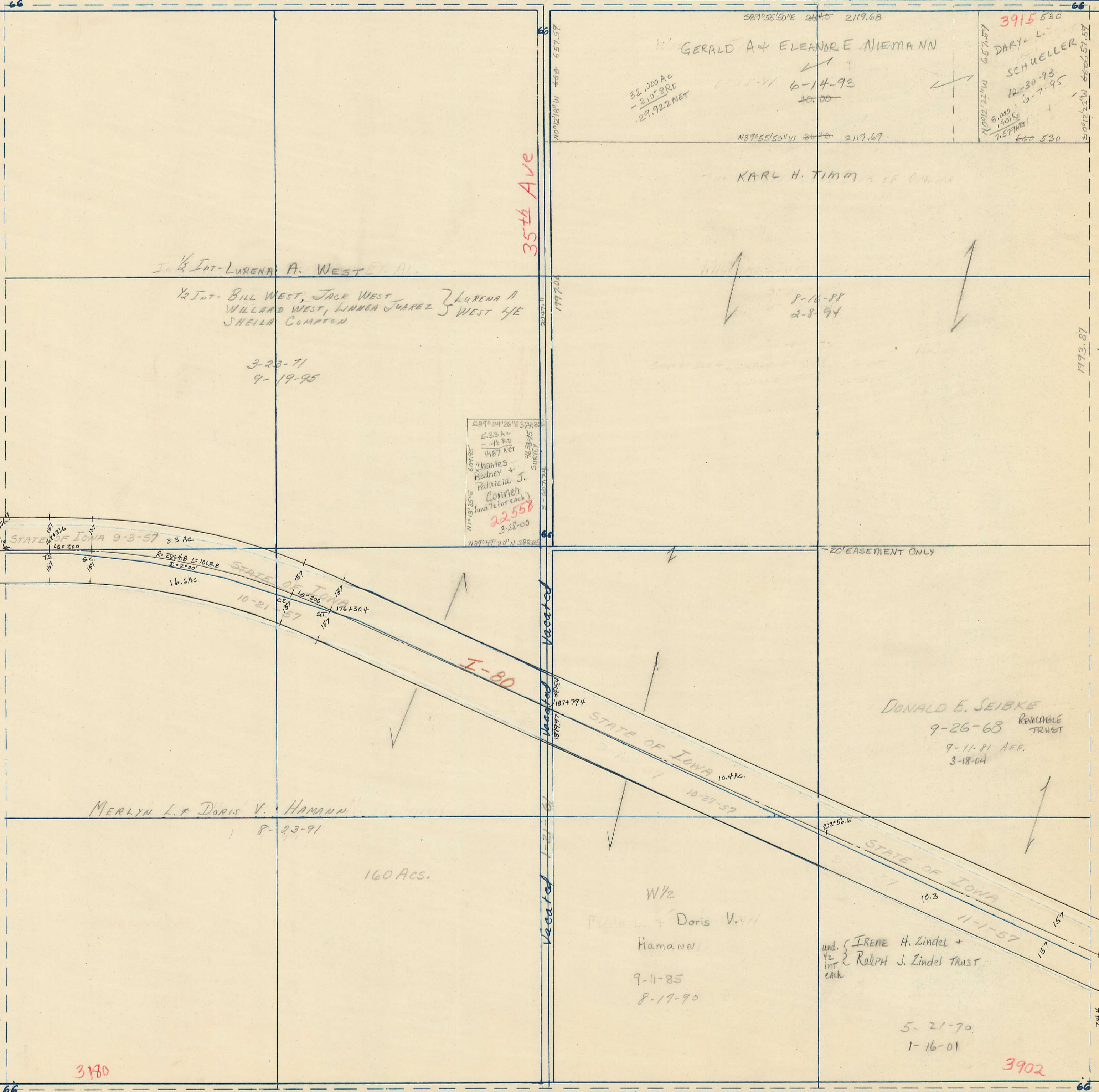
NORTH

SOUTH

230<sup>±</sup> St

79.82 CH

2647.68



35<sup>±</sup> Ave

Charles Rodney + Patricia J. Connor  
(and 1/2 int each)  
22.558  
3-28-00

3915.530  
DARYL L. SCHUELLER  
12-30-93  
6-7-95  
8.000  
140180  
7.57710

DONALD E. SEIBKE  
9-26-68 REVOCABLE TRUST  
9-11-81 AFF.  
3-18-04

und. 1/2 int each  
IRENE A. Zindel + RALPH J. Zindel TRUST

3180

220<sup>±</sup> St

79.96 CH

3902

WEST

EAST