

SECTION 21

Township 79-North; Range 1

EAST OF THE FIFTH PRINCIPAL MERIDIAN

SCOTT COUNTY, IOWA

CLEONA TOWNSHIP

SCALE IN CHAINS



SCALE IN FEET



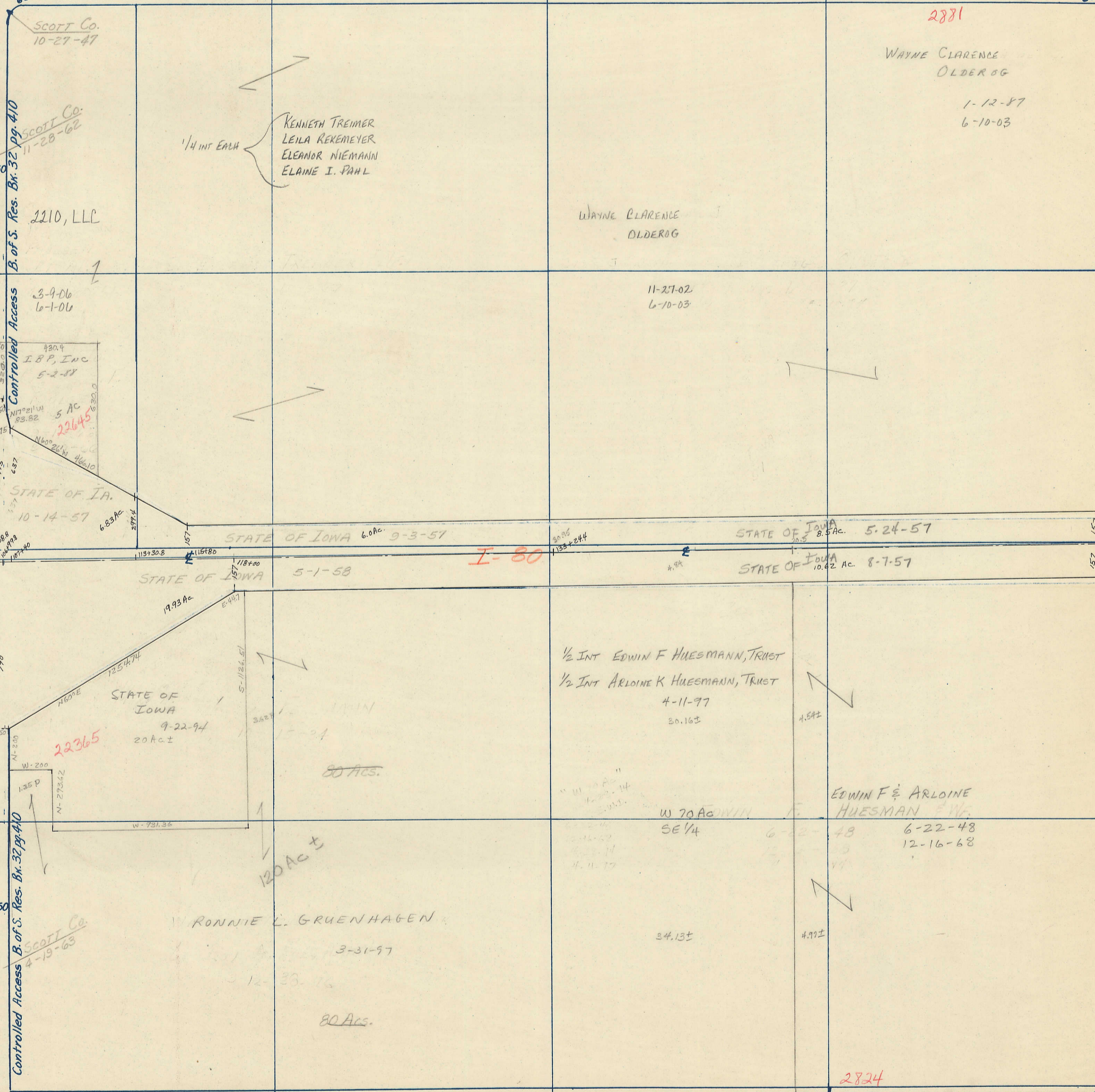
Transfer Page 154

NORTH

230th St

80.12 CH

20th AVE



WEST

EAST

I-80

20th AVE

220th St

80.04 CH

SOUTH

SCOTT Co. 10-27-47

SCOTT Co. 11-28-62

2210, LLC

3-9-06 6-1-06

I B P, Inc 5-2-87

5 AC 22645

STATE OF IA. 10-14-57

1/4 INT EACH KENNETH TREIMER LEILA REKEMEYER ELEANOR NIEMANN ELAINE I. PAHL

2881 WAYNE CLARENCE OLDER OG 1-12-87 6-10-03

WAYNE CLARENCE OLDER OG

11-27-02 6-10-03

STATE OF IOWA 6.0Ac 9-3-57

STATE OF IOWA 8.5Ac 5-24-57

STATE OF IOWA 5-1-58

STATE OF IOWA 10.62 Ac 8-7-57

STATE OF IOWA 9-22-94 20Ac±

1/2 INT EDWIN F HUESMANN, TRUST 1/2 INT ARLOINE K HUESMANN, TRUST 4-11-97 30.16±

EDWIN F & ARLOINE HUESMAN 6-22-48 12-16-68

SCOTT Co. 4-19-63

RONNIE L. GRUENHAGEN 3-31-97

W 70 AC W 1/4 SE 1/4 6-22-48

2824