

SECTION 20

Township 79-North; Range 1

EAST OF THE FIFTH PRINCIPAL MERIDIAN

SCOTT COUNTY, IOWA

CLEONA TOWNSHIP

NORTH

SCALE IN CHAINS



SCALE IN FEET



Transfer Page 153

LOREN C. & CATHERINE S. HADEN 3-7-89

230th ST 79.70ch

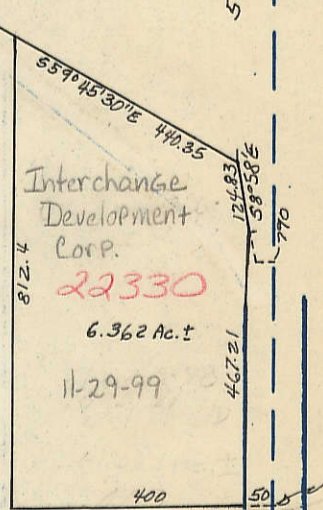
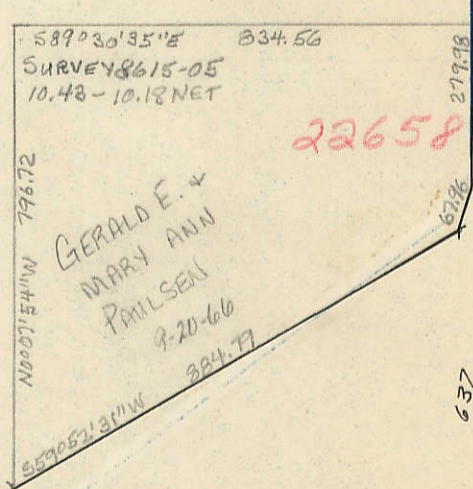
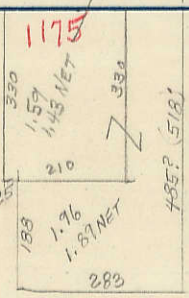
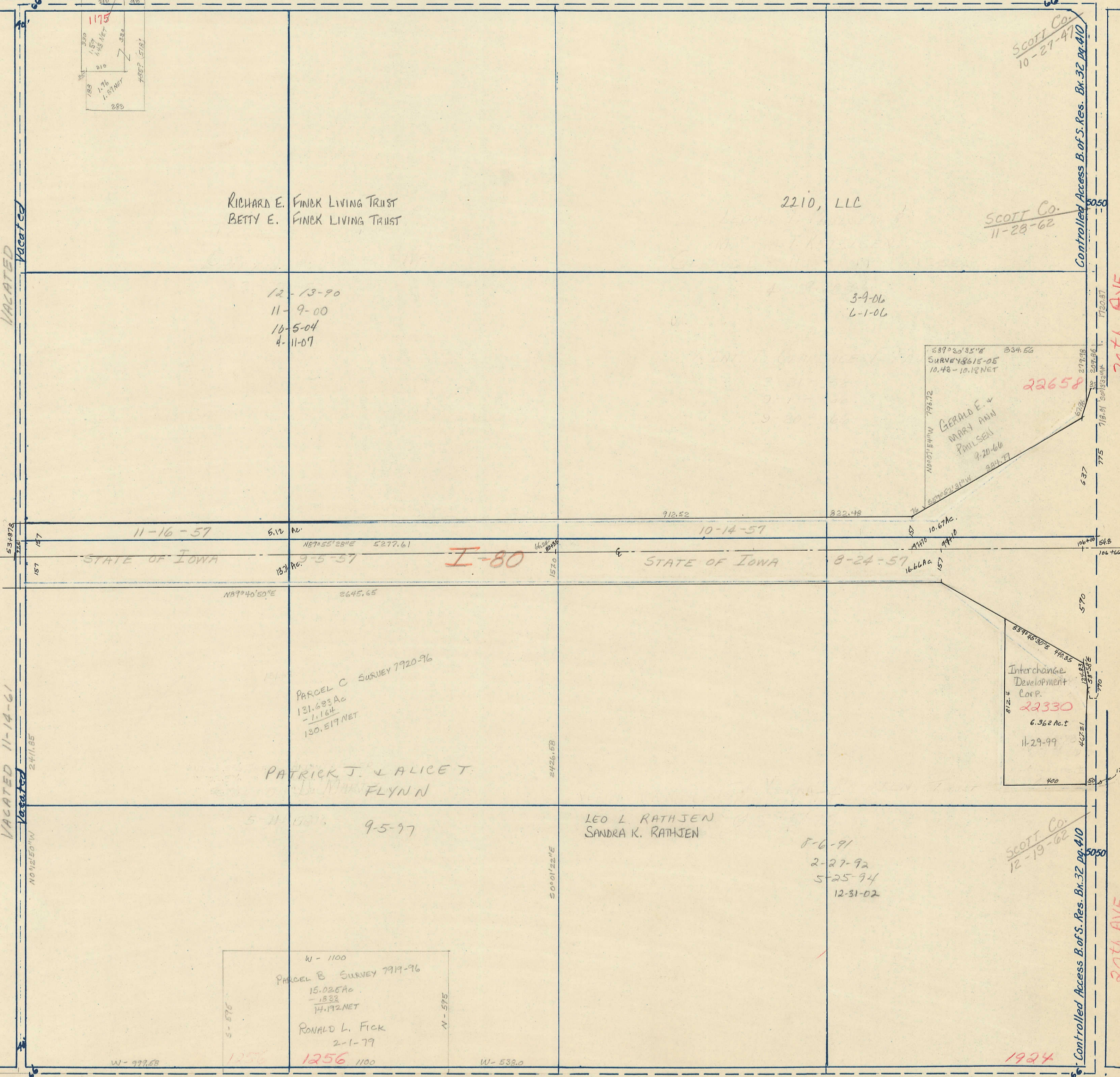
SCOTT Co. 10-27-47

SCOTT Co. 11-28-62

Controlled Access B. of S. Res. Bk. 32 pg. 410

20th AVE

EAST



VACATED

VACATED

STATE OF IOWA

STATE OF IOWA

I-80

WEST

220th ST 79.62ch

SOUTH

Controlled Access B. of S. Res. Bk. 32 pg. 410

20th AVE