

SECTION  
12

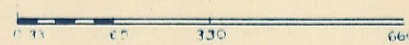
SCALE IN CHAINS



Township 80-North; Range 4

EAST OF THE FIFTH PRINCIPAL MERIDIAN

SCALE IN FEET

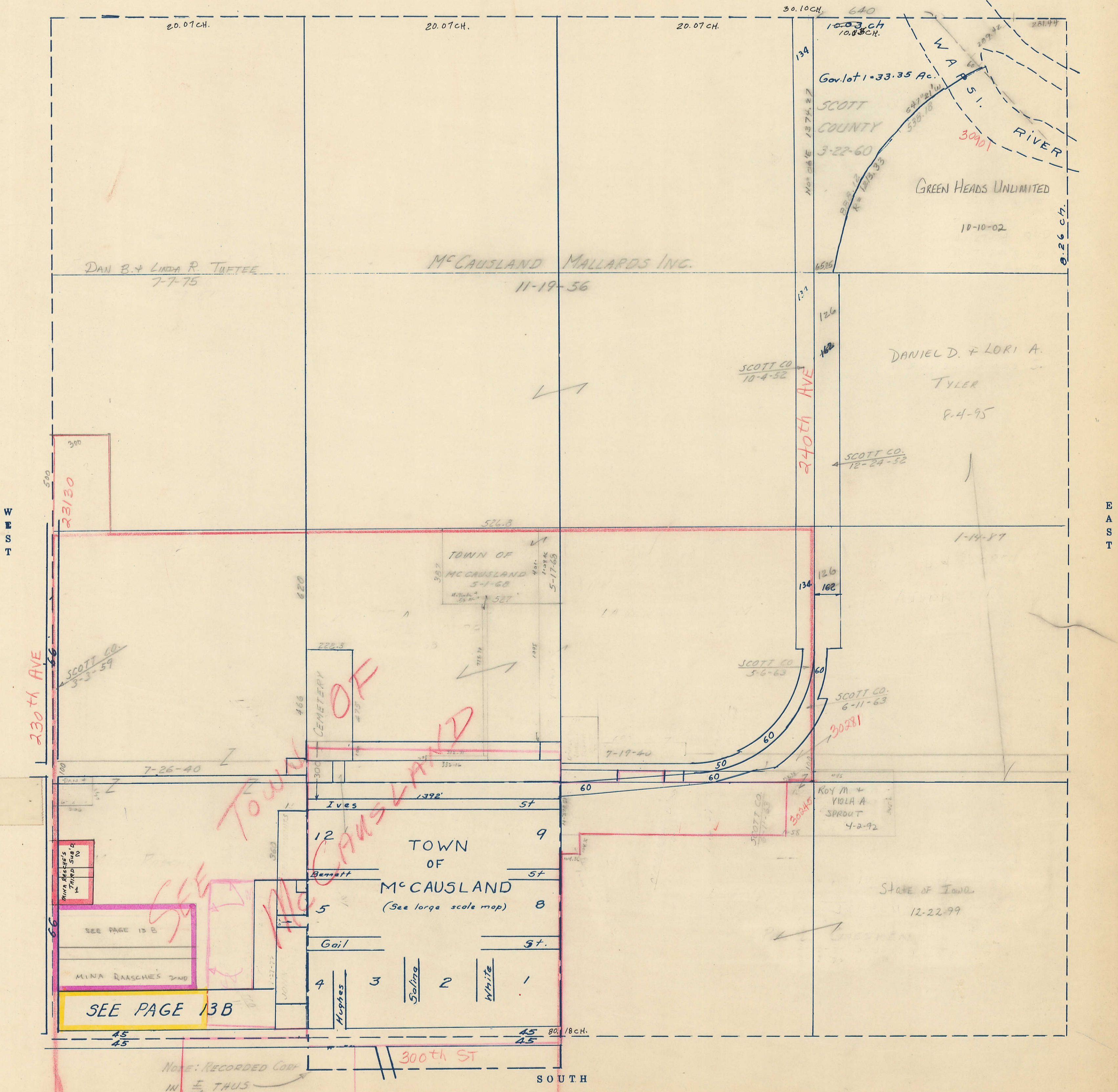


SCOTT COUNTY, IOWA  
BUTLER TOWNSHIP

Transfer Page 104

NORTH

ANNEX: 9-28-2004  
2004-34353



WEST

EAST

SOUTH

NOTE: RECORDED CORP  
IN E THUS

Town of  
McCAUSLAND

- 12 Ives 5t
- 9 Bennett 5t
- 8 Gail 5t
- 4 Hughes
- 3 Solina
- 2 White
- 1

SEE PAGE 13B

SEE PAGE 13B

MINA RAASCHES 2ND

MINA RAASCHES 2ND

SCOTT CO.  
3-3-59

DAN B. & LINDA R. TUETEE  
7-7-75

McCAUSLAND MALLARDS INC.  
11-19-56

DANIEL D. & LORI A.  
TYLER  
8-4-95

SCOTT CO.  
12-24-52

SCOTT CO.  
10-4-52

SCOTT CO.  
5-6-63

SCOTT CO.  
6-11-63

ROY M. &  
VIOLA A.  
SPROUT  
4-2-92

STATE OF IOWA  
12-22-99

Gov. lot 1 - 33.35 Ac.  
SCOTT COUNTY  
3-22-60

GREEN HEADS UNLIMITED

10-10-02

230th AVE

240th AVE

300th ST