

SECTION
11

Township 80-North; Range 4

EAST OF THE FIFTH PRINCIPAL MERIDIAN

SCOTT COUNTY, IOWA

BUTLER TOWNSHIP

NORTH

SCALE IN CHAINS



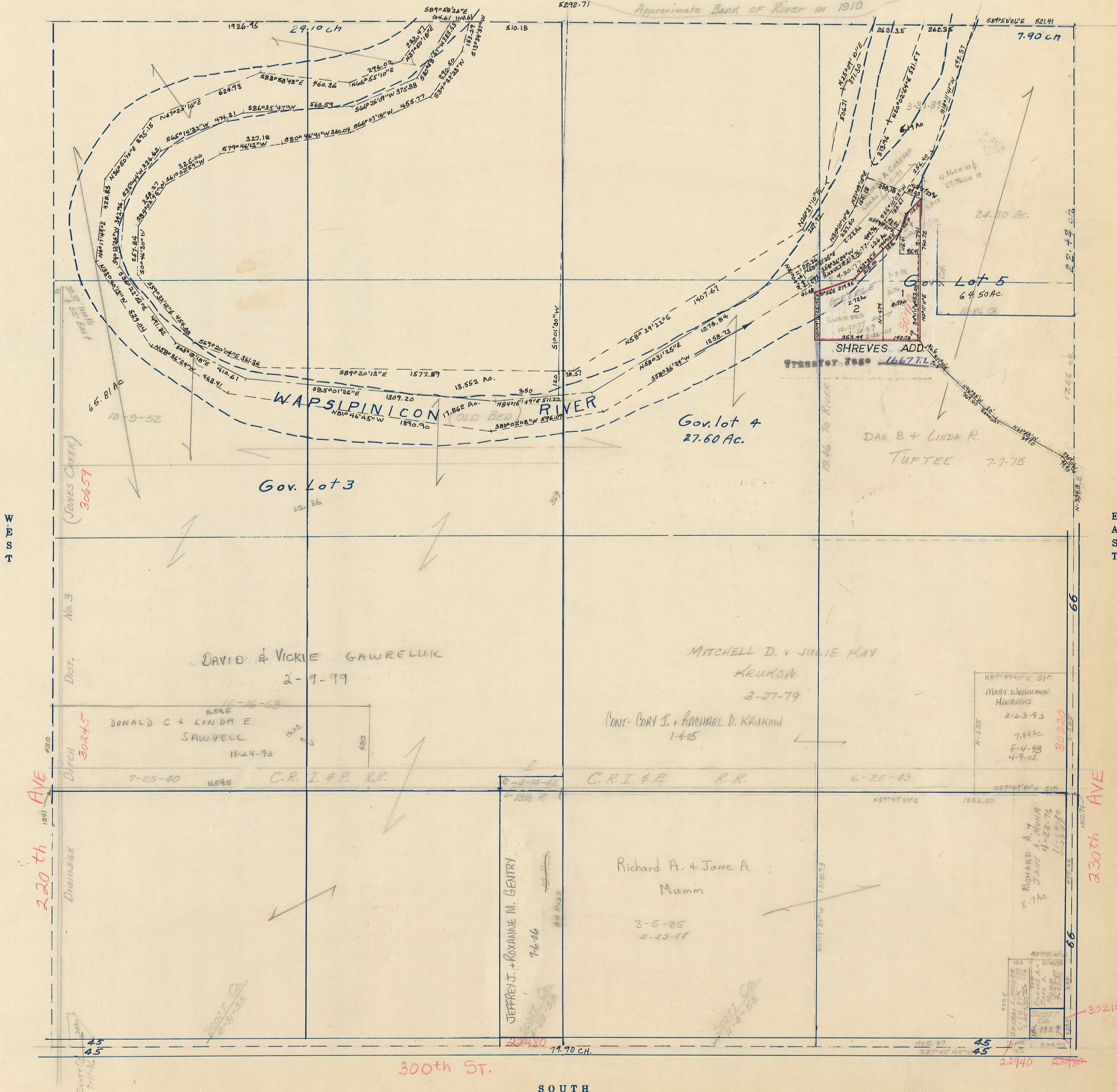
SCALE IN FEET



Transfer Page 103

5292.71

Approximate Bank of River in 1910



WEST

EAST

220th AVE

230th AVE

300th St.

SOUTH

MARY WEGMANN HINRICHS
3-23-93
7.44 AC.
8-4-98
4-9-02

RICHARD A. & JANE A. MUMM
E. 7 AC.
4-22-76
11-2-80
5-2-80

SCOTT CO. 11-4-55

30210