

WINFIELD TWP.
U.S. HWY. NO. 61
RT. 65

Sec. 36-80-3

PARK VIEW FIRST ADD.

Transfer Page 1238 TL
1238 TL
1239 TL
1239 TL

PARK VIEW PARK WAY

Transfer Page 1393 TL

SEE PAGE 31 J

SEE PAGE 31 J

PARK VIEW OWNER'S ASSOCIATION
6-17-95

PARKVIEW 10TH ADD

VALLEY

PARK VIEW FIFTH ADD.

Transfer Page 1466 TL

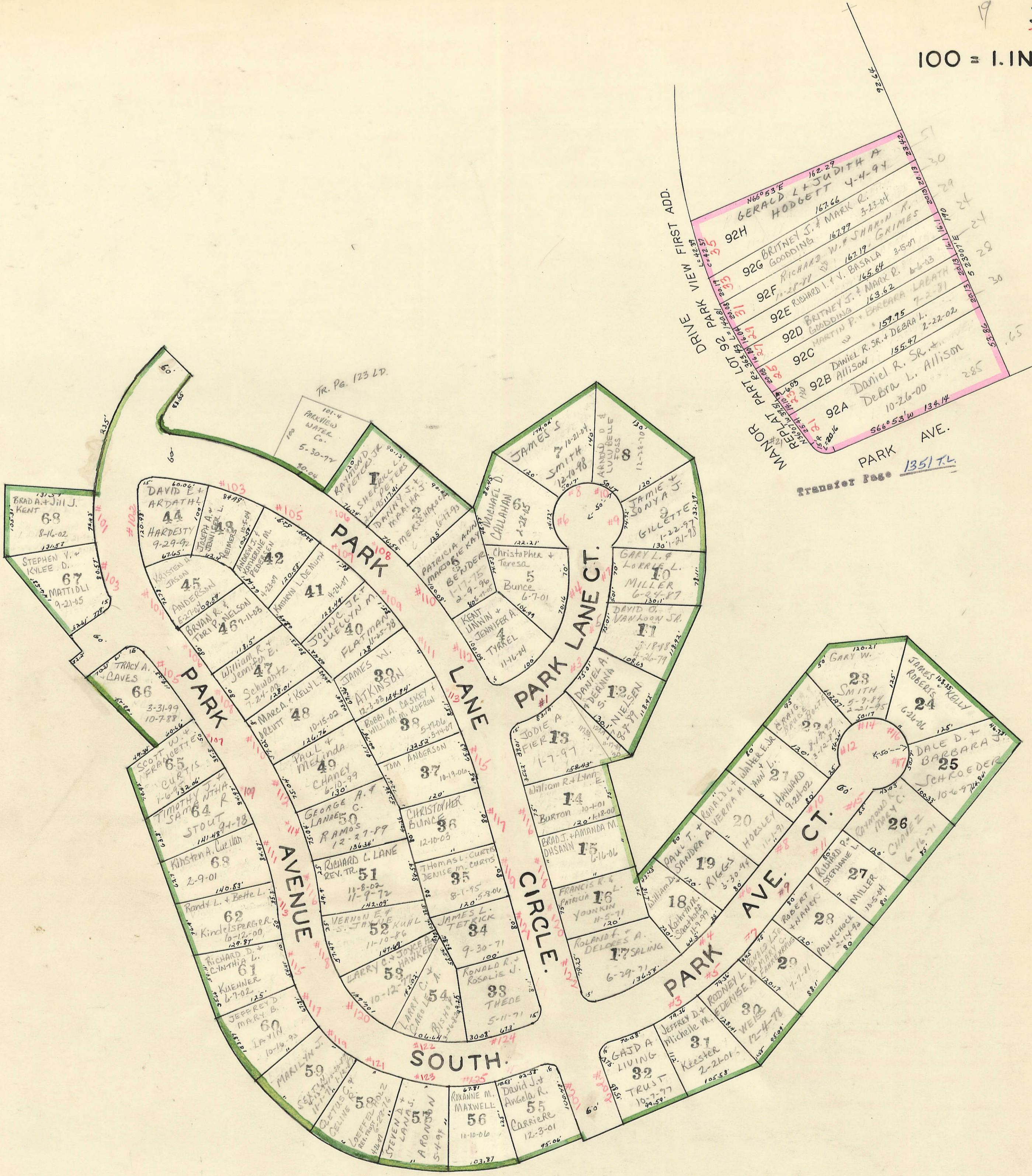
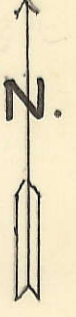
PARK VIEW DEVELOPMENT, INC.
5-14-72
4-19-73
7-12-71

SEE PAGE 31 J

PARK VIEW MANOR
CONDO # 1184-83 LOT 84 PARK VIEW STN
7-5-83
BLANK LOTS: LARRY E. MILLAGE
1-12-88 1-18-93 4-88

1A	JEFFREY S. & PENNY M. PLOOG	8-4-04
1B	TONIA J. HARMS	6-1-04
2A	JUANITA E. WEST	10-18-06
2B	MEGAN K. SMITH	2-1-05
3B	RONALD BAKER	2-21-07

100 = 1. INCH.



PARK VIEW SECOND ADDITION.

TR. BK. Lots 1-30 Pg. 1324 T.L. 4-11-69
 - TR. BK. Lots 31-68 Pg. 1325 T.L.

BLANK LOTS!
PARK VIEW DEVELOPMENT, INC.

7-9-71
PARK VIEW THIRD ADD.

SCALE: 1" = 100'

