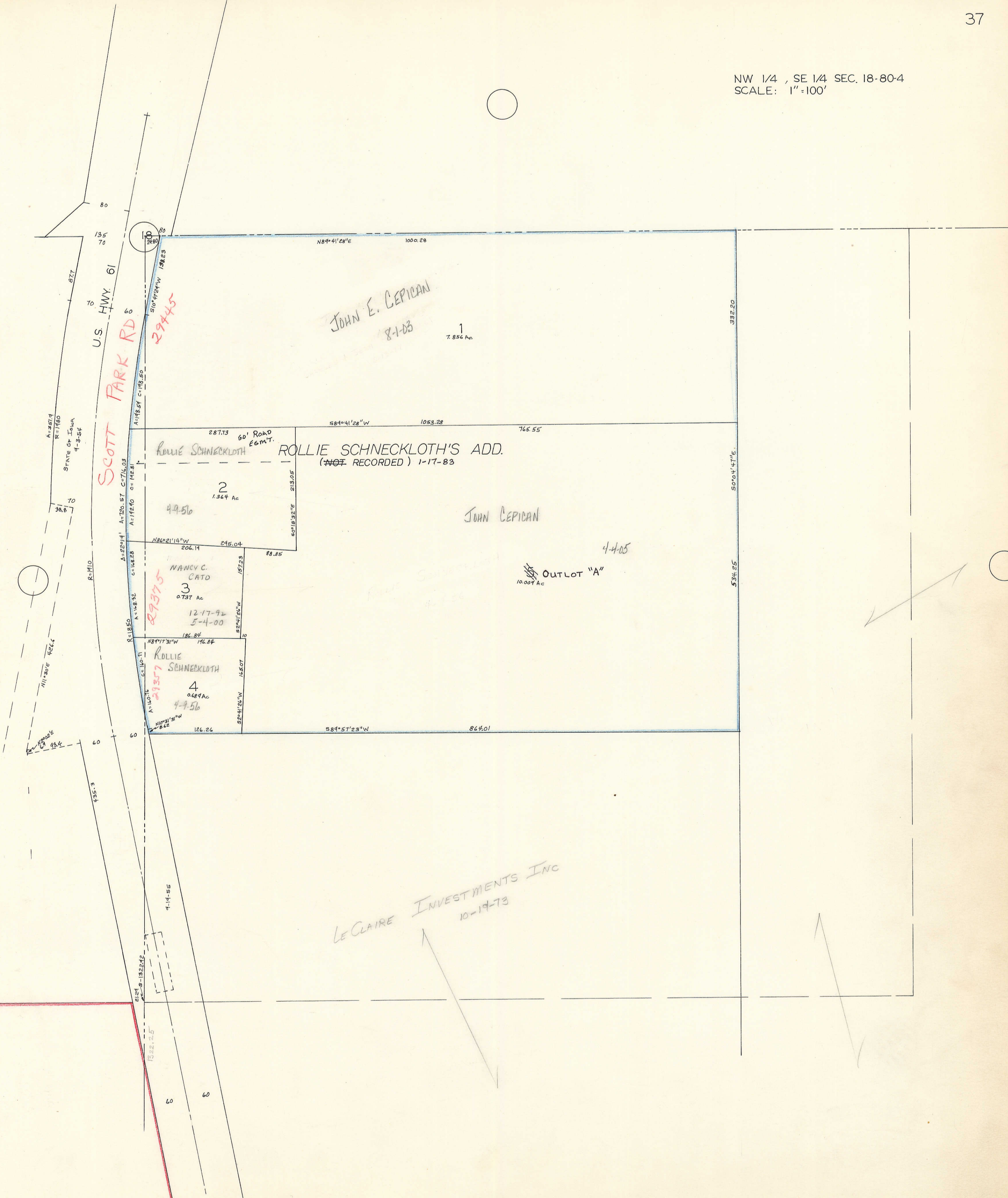


NW 1/4, SE 1/4 SEC. 18-80-4
SCALE: 1"=100'



JOHN E. CEPICAN
8-1-83

1
7.856 Ac

29445

SCOTT PARK RD
U.S. HWY 61

49.56

NANCY C. CATO
3
0.737 Ac
12-17-92
5-4-00

ROLLIE SCHNECKLOTH
4
0.689 Ac
4-9-56

ROLLIE SCHNECKLOTH'S ADD.
(NOT RECORDED) 1-17-83

JOHN CEPICAN

OUTLOT "A"
10.007 Ac

LECLAIRE INVESTMENTS INC
10-19-73

A=287.4
R=1180
STATE OF IOWA
4-3-54

A=192.50
C=142.81

A=220.91
A=120.57
C=76.03

A=148.42
C=108.28

A=110.76
C=110.71

A=132.42
C=132.42

A=132.42
C=132.42

A=132.42
C=132.42

A=132.42
C=132.42

A=132.42
C=132.42

A=132.42
C=132.42

A=132.42
C=132.42

A=132.42
C=132.42

A=132.42
C=132.42

A=132.42
C=132.42

A=132.42
C=132.42

A=132.42
C=132.42

A=132.42
C=132.42

A=132.42
C=132.42

A=132.42
C=132.42

A=132.42
C=132.42