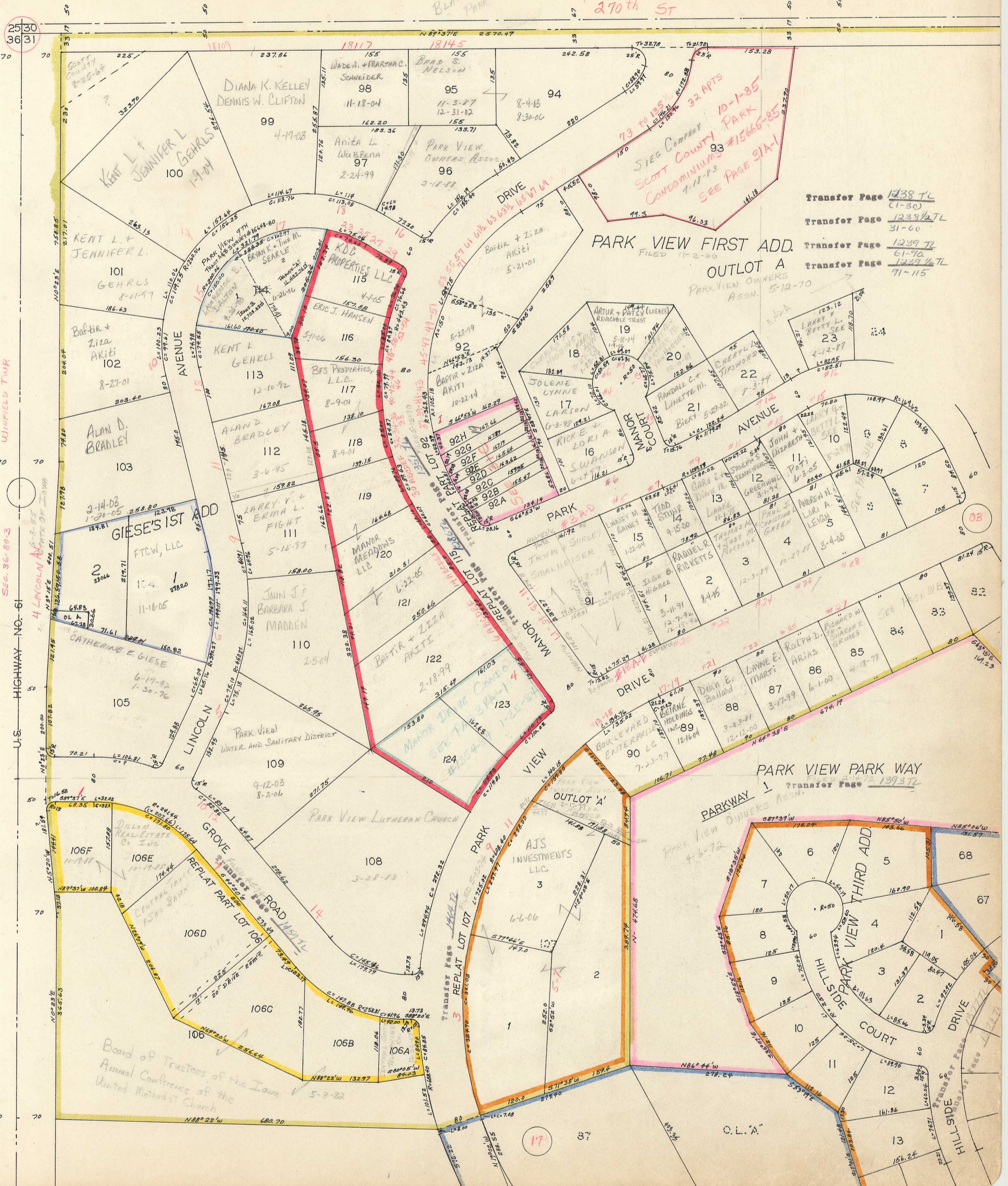


2530
3631

BLANK LOT PARK VIEW DEVELOPMENT
270th ST



Transfer Page 1438 TL
(1-30)
Transfer Page 1233 1/2 TL
31-60
Transfer Page 1239 TL
61-70
Transfer Page 1239 1/2 TL
91-115

PARK VIEW FIRST ADD.
OUTLOT A
FILED 11-2-66
PARK VIEW OWNERS ASSN. 5-12-70

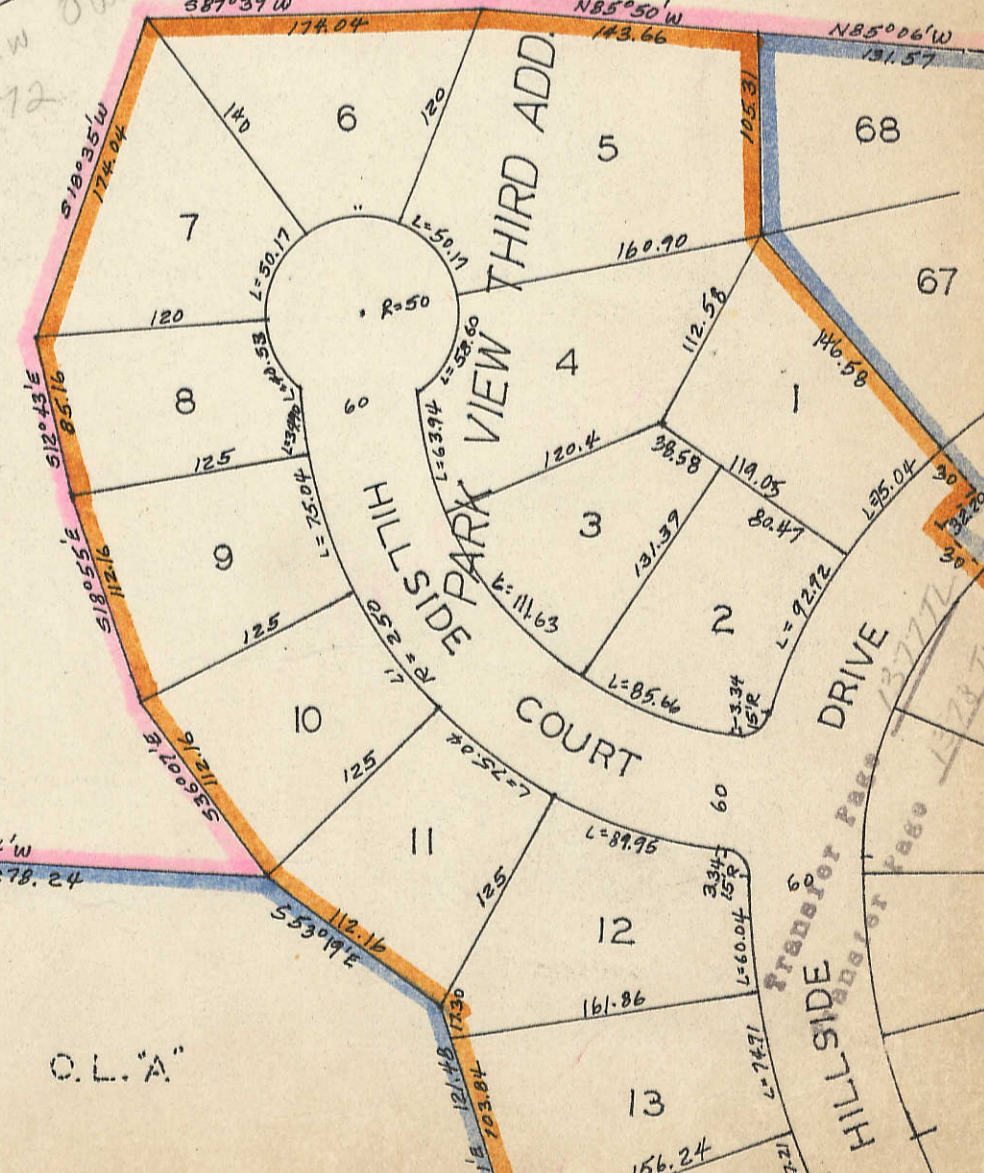
WINFIELD TWR

SEC. 36-80-3
U.S. HIGHWAY NO. 61

4 LINCOLN AVE
STATE OF IOWA
N 89° 15' E 499.51'
S 12° 51' 50" E 58.50'
N 89° 15' E 499.51'
S 12° 51' 50" E 58.50'

Board of Trustees of the Iowa
Annual Conference of the
United Methodist Church

PARK VIEW PARK WAY
Transfer Page 1393 TL



C.L.A.

MANOR DRIVE CONDOMINIUMS #1354-04
LOTS 123 & 124 PARK VIEW 1ST REFLAT 115
THE FIVE M CORP. 8-8-73 FILED 1/25/84

A-1	
A-2	
A-3	To - TERRY KRAKER 2-2-84
A-4	
A-5	HAROLD E. HOBGETT, GERALD L. & JUDITH A. HOBGETT 2-12-86
A-6	WILMA B. DENNIS ON REVOCABLE TRUST 12-30-84 7-28-90
B-1	SCOTT M. MAXWELL 4-2-98
B-2	
B-3	
B-4	David B. + Valene L. Nusbaum 4-6-00
B-5	
B-6	
C-1	Jean E. NEYMEYER 7-27-00
C-2	
C-3	
C-4	
C-5	To: STEPHEN KELLER
C-6	MARK HENDERSON 1-2-02

SCOTT COUNTY PARK CONDOMINIUMS
#15665-85 PARK VIEW 1ST LOT 93 4-17-91
D. JOHN R. HOWE, KEOGH PLAN TRUST 6-5-89
P. R. D. A. E. WIEGE 8-14-87 FILED 10-1-85

1	
2	
3	
4	
5	
6	
7	
8	
9	JOHN K. WISOR 12-15-98
10	
11	
12	
13	
14	
15	
16	
17	
18	
19	
20	
21	
22	
23	
24	4-12-91
25	
26	
27	
28	
29	John K. Wisor 2-28-02
30	
31	
32	