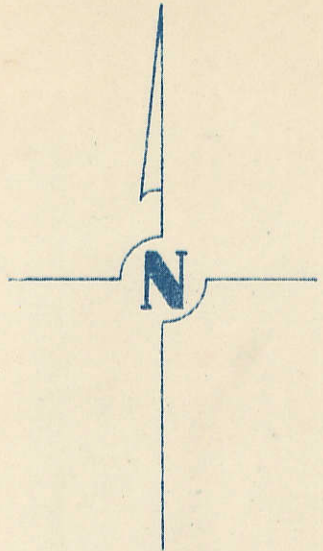


SECTION 12
TOWNSHIP 77 NORTH, RANGE 2 EAST,
5TH PRINCIPAL MERIDIAN
BUFFALO TOWNSHIP
SCOTT COUNTY, IOWA

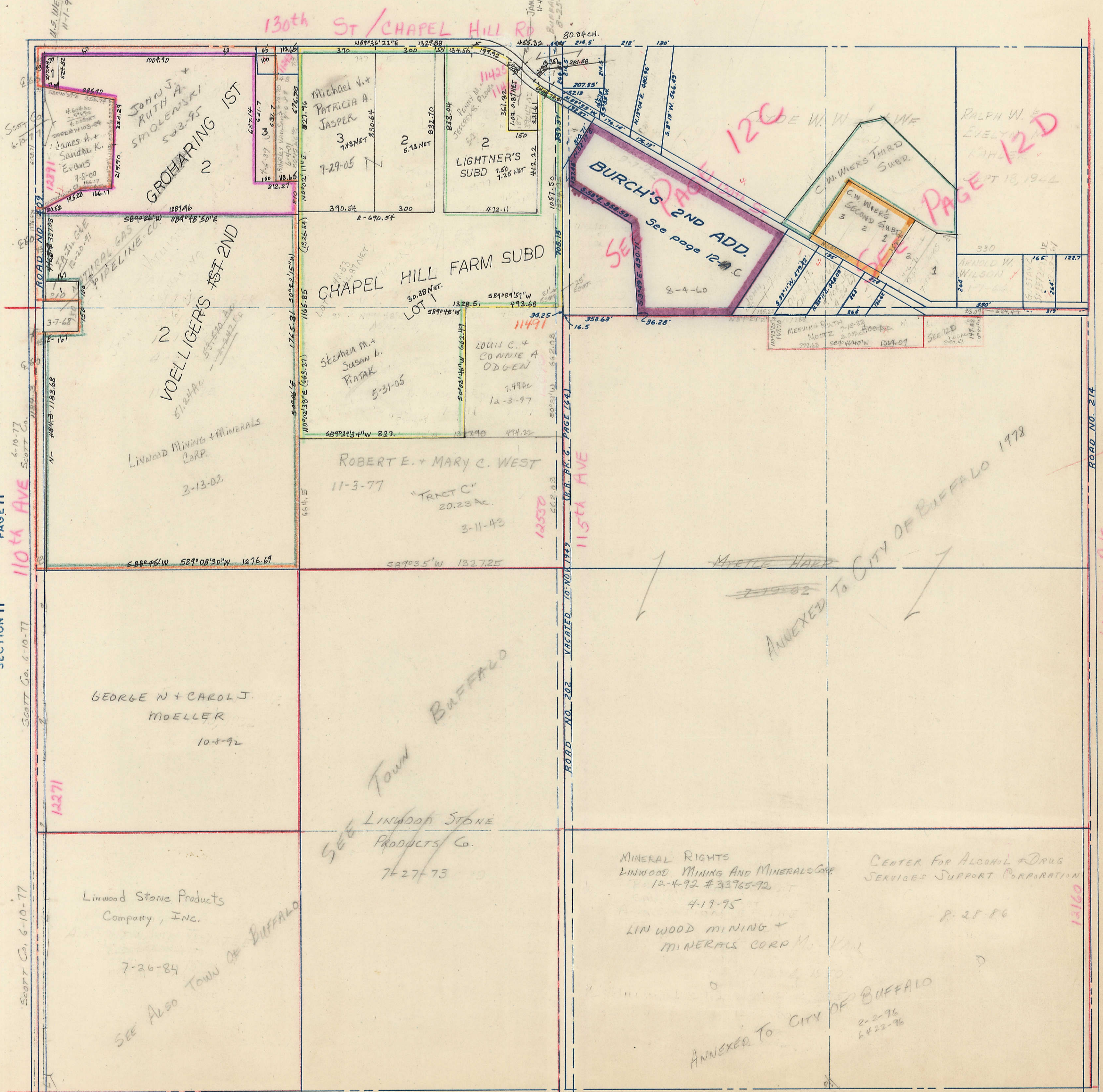
DAV. ANNEX 6052-96

TRANSFER PAGE 80



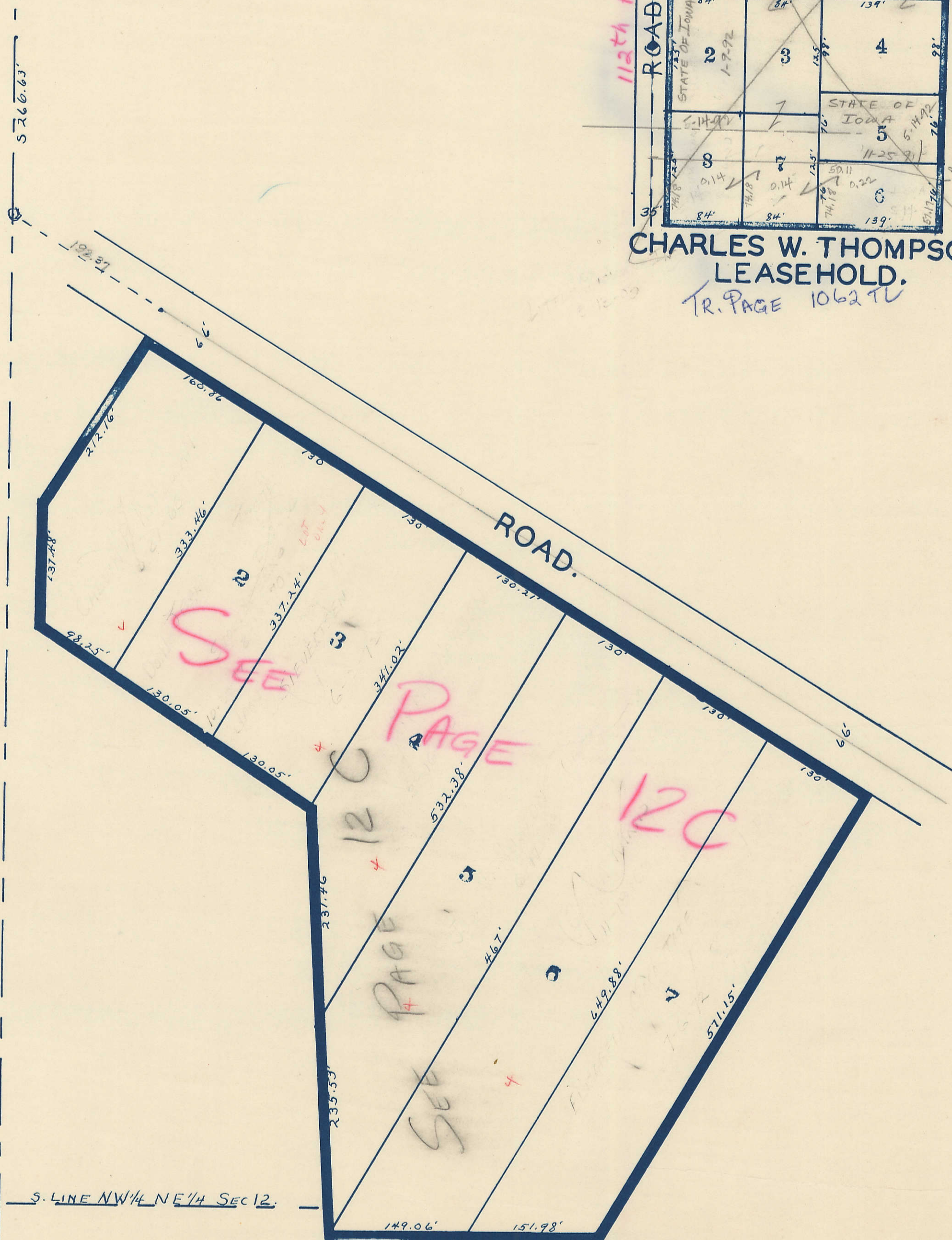
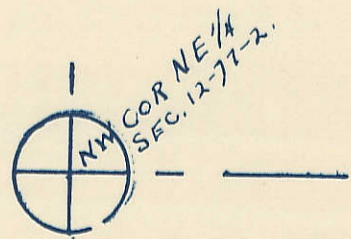
SCALE: 1 INCH = 330 FEET

SECTION I PAGE I



PAGE II
SECTION II
6-10-77
110th AVE

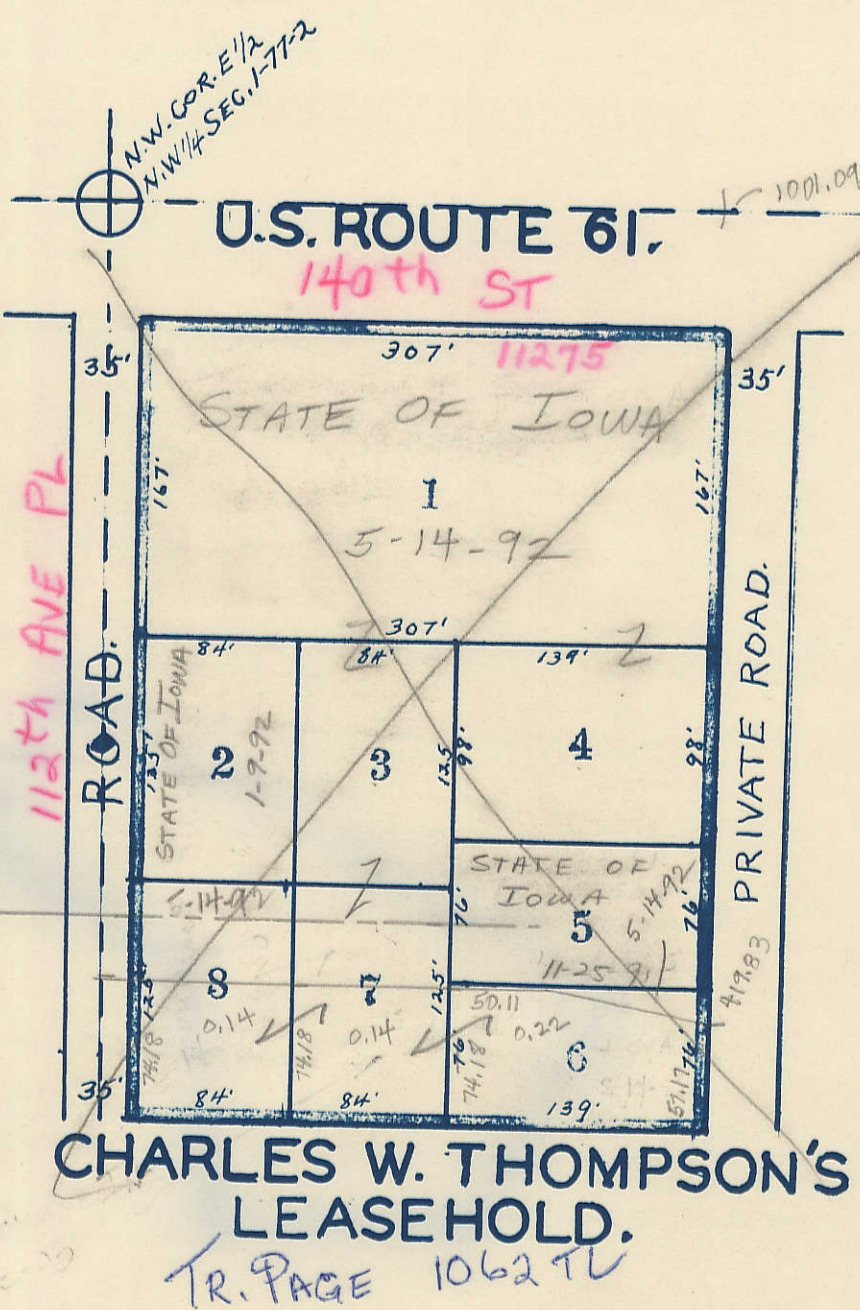
UTAH AVE
SECTION 7
PAGE ROCKINGHAM TWP.
CITY OF DAVENPORT



BURCH'S 2ND ADDITION.

Plat. 12-77-2

Transfer Page 1032 TL



UTAH HEIGHTS FIRST ADD.

5	190'	100'
GREGORY A + DEBORAH K.	4	11270
BROOKS	12-26-97	11250
LINWOOD MINING AND MINERALS CORP.	8	22-07
MAX E. PITTMAN JR.	5-28-04	11232
LINWOOD MINING + MINERALS CORP.	1	7-7-99
	1	11218

UTAH AVE.

1574.5 To E 1/4 Cor. SECTION 13

Transfer Page 1046 TL