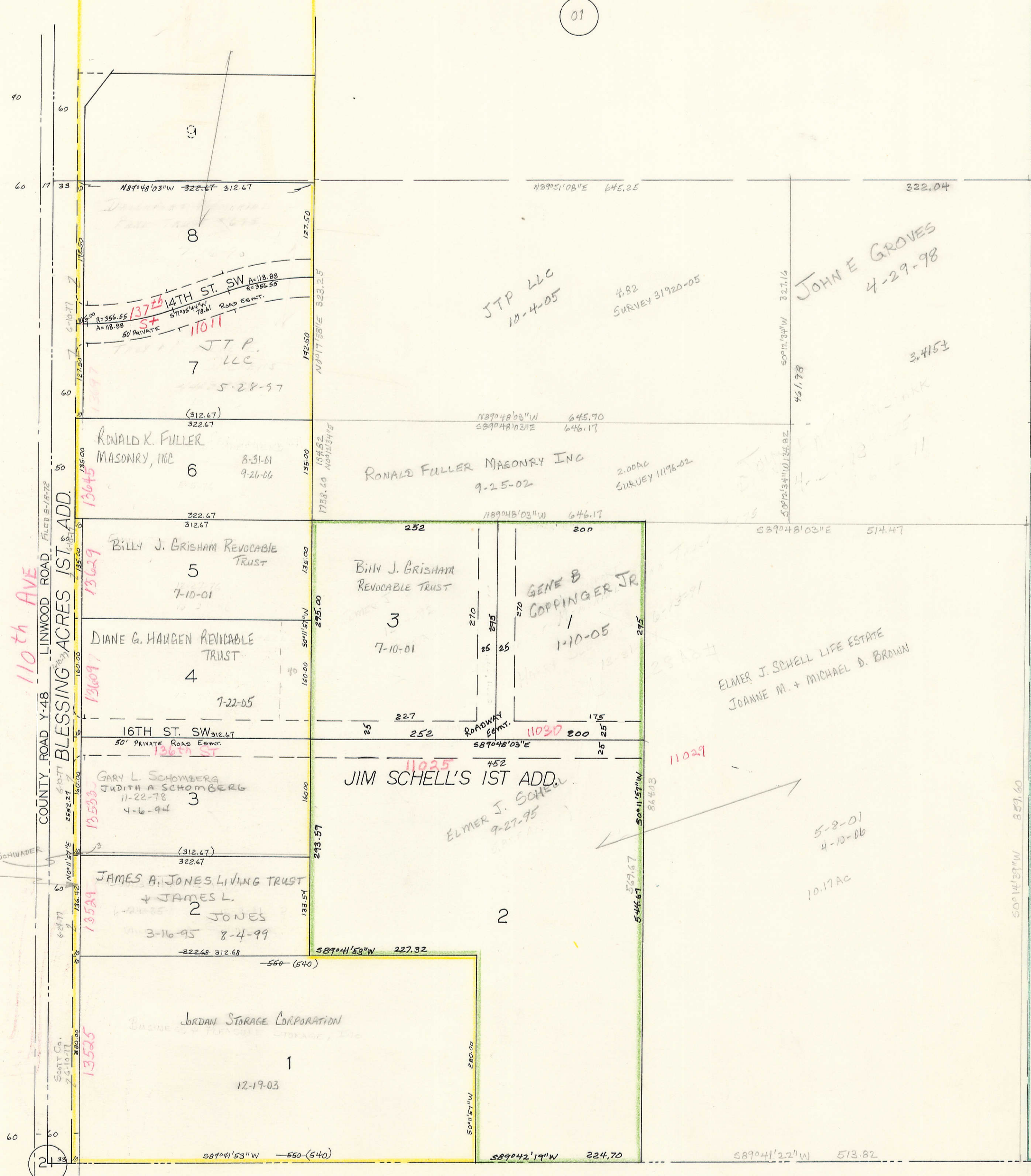


SW 1/4, NW 1/4 SEC. 1-77-2  
SCALE: 1"=100'

01



SEC. 2

19

11-22-98  
WILLIAM A. SCHWABER  
(P/A)

COUNTY ROAD Y-48  
LINWOOD ROAD  
BLESING ACRES 1ST ADD.

110th AVE

21

JOHN E GROVES  
4-29-98

JTP LLC  
10-4-05

RONALD FULLER MASONRY INC  
9-25-02

RONALD K. FULLER  
MASONRY, INC  
8-31-01

BILLY J. GRISHAM REVOCABLE TRUST  
7-10-01

DIANE G. HAUGEN REVOCABLE TRUST  
7-22-05

GARY L. SCHOMBERG  
JUDITH A. SCHOMBERG  
4-6-94

JAMES A. JONES LIVING TRUST  
+ JAMES L. JONES  
3-16-95 8-4-99

JORDAN STORAGE CORPORATION  
12-19-03

BILLY J. GRISHAM REVOCABLE TRUST  
7-10-01

3

252

JIM SCHELL'S 1ST ADD.  
ELMER J. SCHELL  
9-27-95

2

GENE B. COPPINGER JR.  
1-10-05

ELMER J. SCHELL LIFE ESTATE  
JOANNE M. + MICHAEL D. BROWN

5-8-01  
4-10-06

10.17 AC

4.82  
SURVEY 31920-05

2.00 AC  
SURVEY 11196-02

11029

50°11'57"W

544.67

544.67

544.67

544.67

544.67

544.67

544.67

544.67

544.67

544.67

50°12'34"W

461.78

50°12'34"W

50°12'34"W

50°12'34"W

50°12'34"W

50°12'34"W

50°12'34"W

50°12'34"W

50°12'34"W

50°12'34"W

50°14'37"W

557.60

50°14'37"W

557.60

50°14'37"W

40

60

60

60

60

60

60

60

60

60

60

60

60

60

60

60

60

60

60

60

60

60

60

60

60

60

60

60

60