

SEC. 6 PAGE, 6B

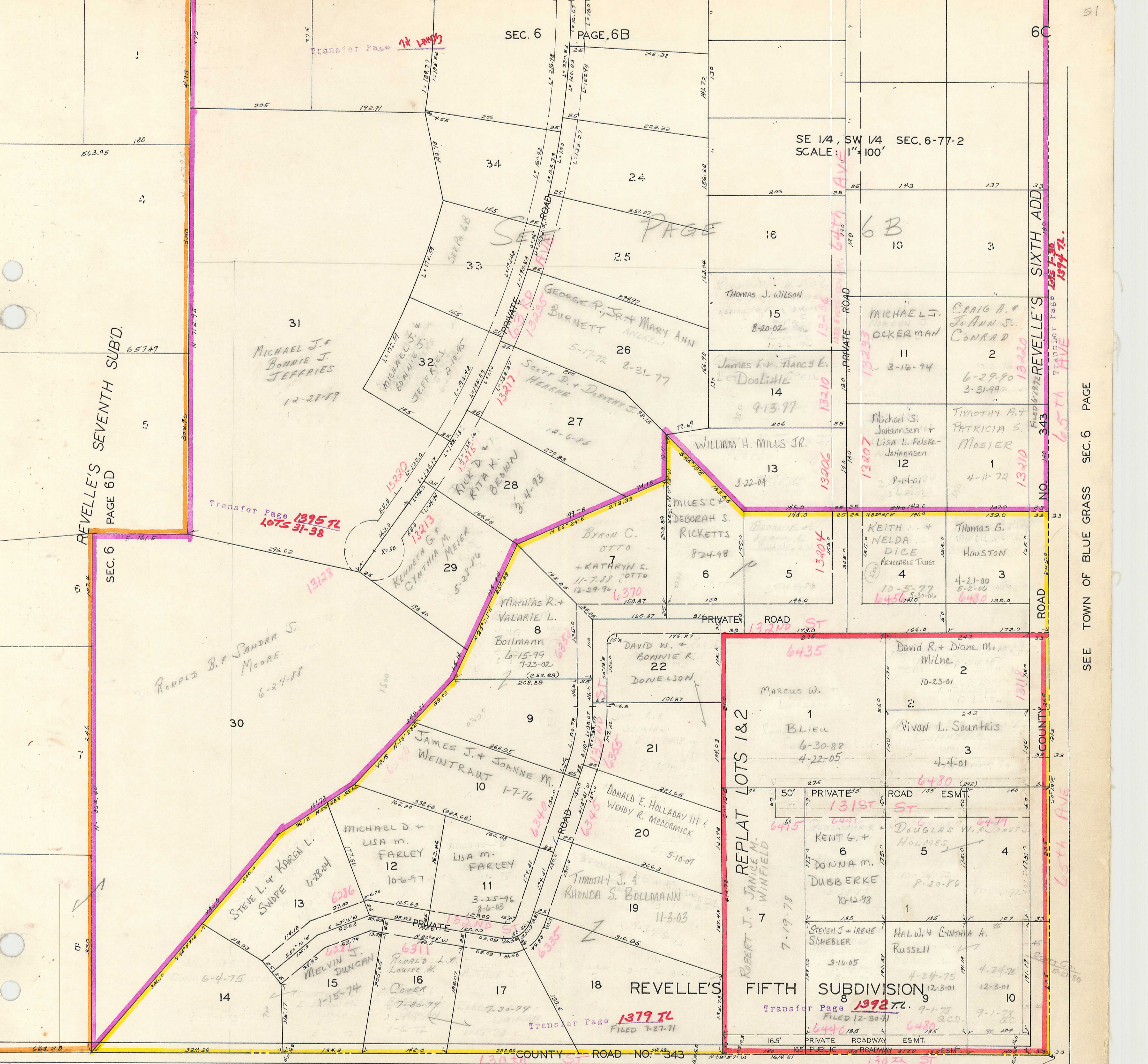
6C

SE 1/4, SW 1/4 SEC. 6-77-2  
SCALE: 1" = 100'

REVELLE'S SEVENTH SUBD.  
PAGE 6D  
SEC. 6

SIXTH ADD  
NO. 343  
REVELLE'S  
FIFTH SUBDIVISION

SEE TOWN OF BLUE GRASS SEC. 6 PAGE



SE CORNER SW 1/4 SEC. 6-77-2