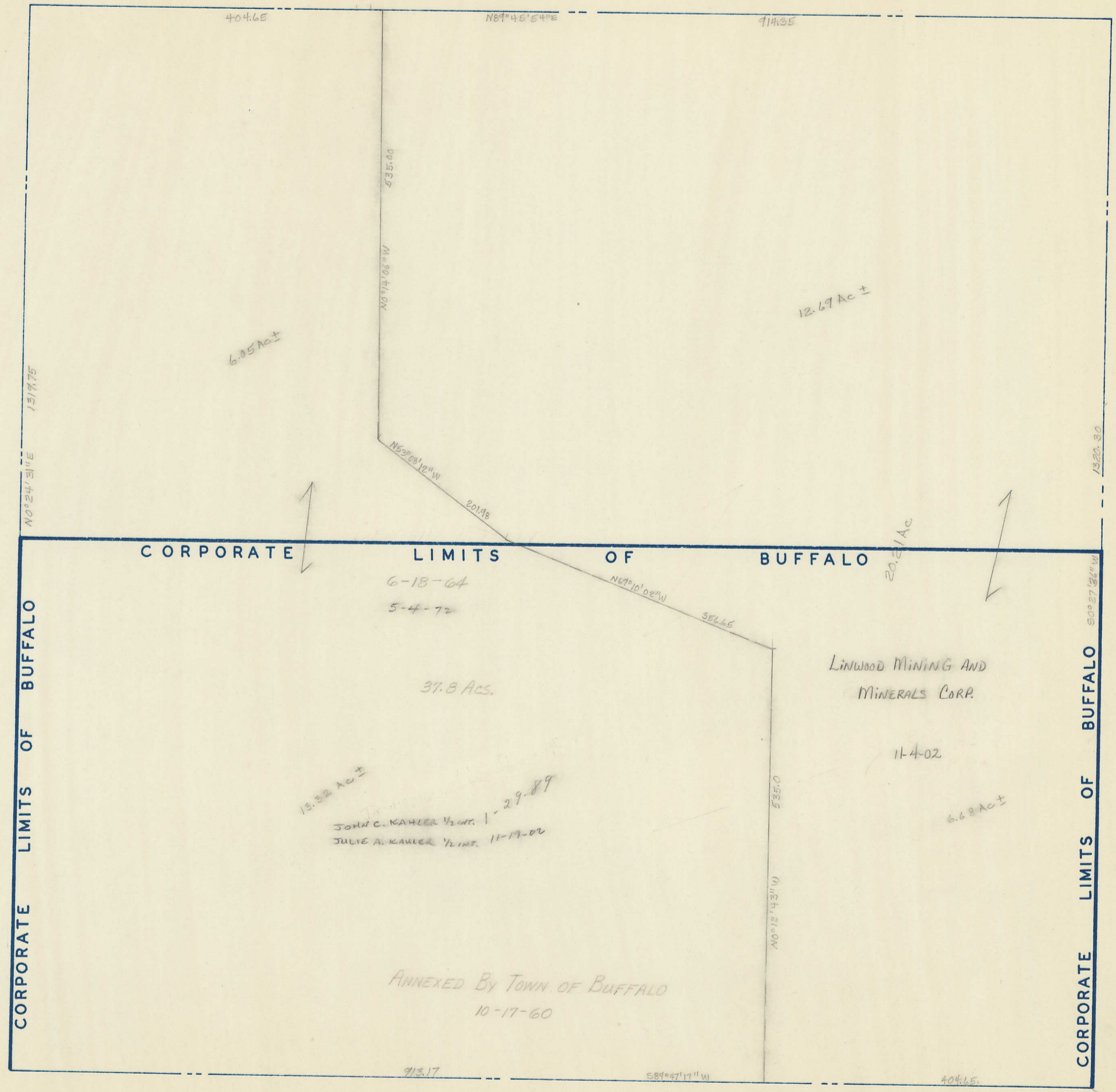


Transfer Page 82 LANDS



13.32 Ac ±
 JOHN C. KAHLER 1/2 INT. 1-29-89
 JULIE A. KAHLER 1/2 INT. 11-19-02

LINWOOD MINING AND
 MINERALS CORP.

ANNEXED BY TOWN OF BUFFALO
 10-17-60