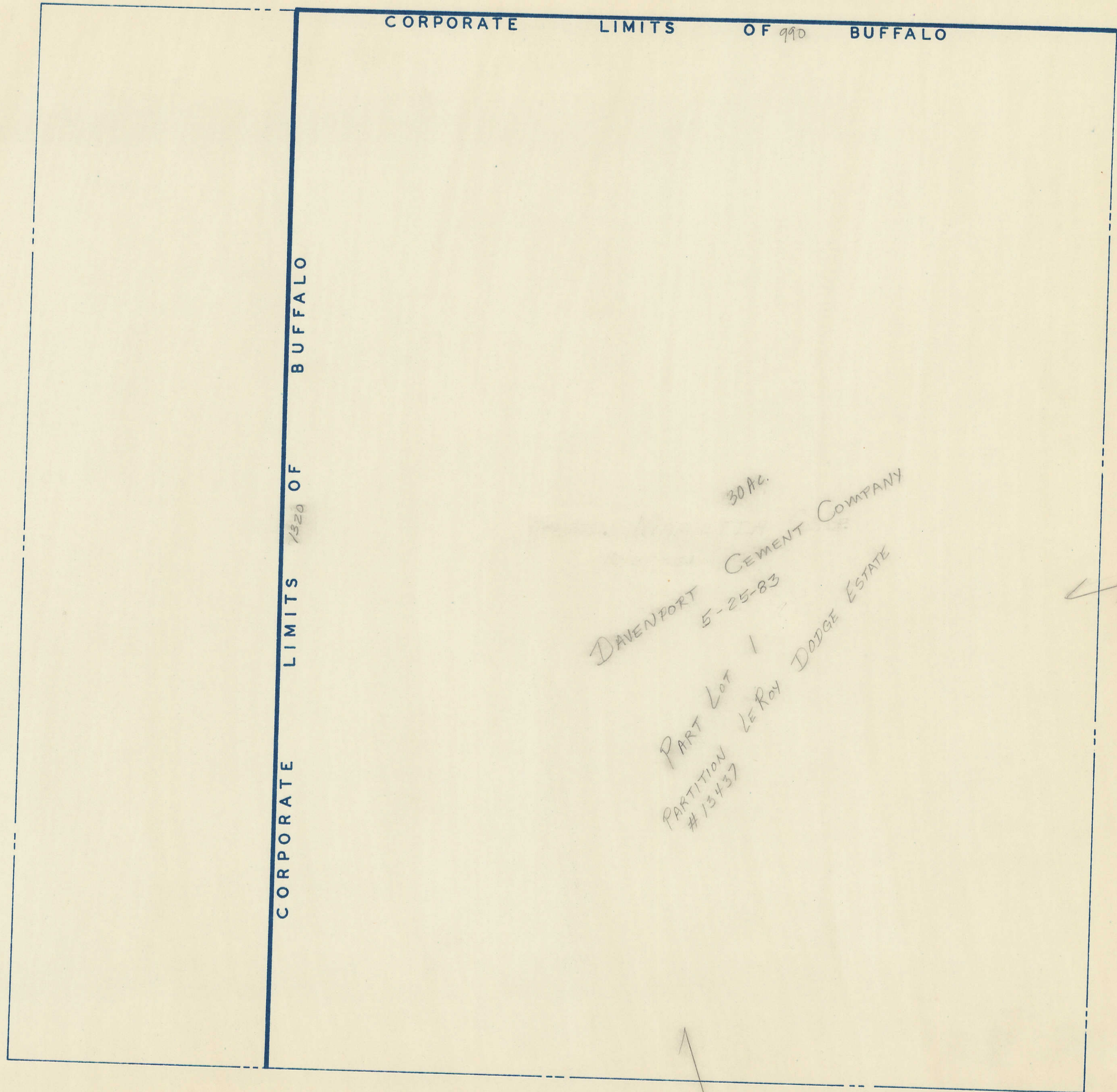


Transfer Page 83 LANDS



CORPORATE LIMITS 1320 OF BUFFALO

CORPORATE LIMITS OF 990 BUFFALO

DAVENPORT 30 AC.
5-25-83
CEMENT COMPANY
PART Lot 1
PARTITION #13437
LE ROY DODGE ESTATE

7 SEC. 22

49 SEC. 14