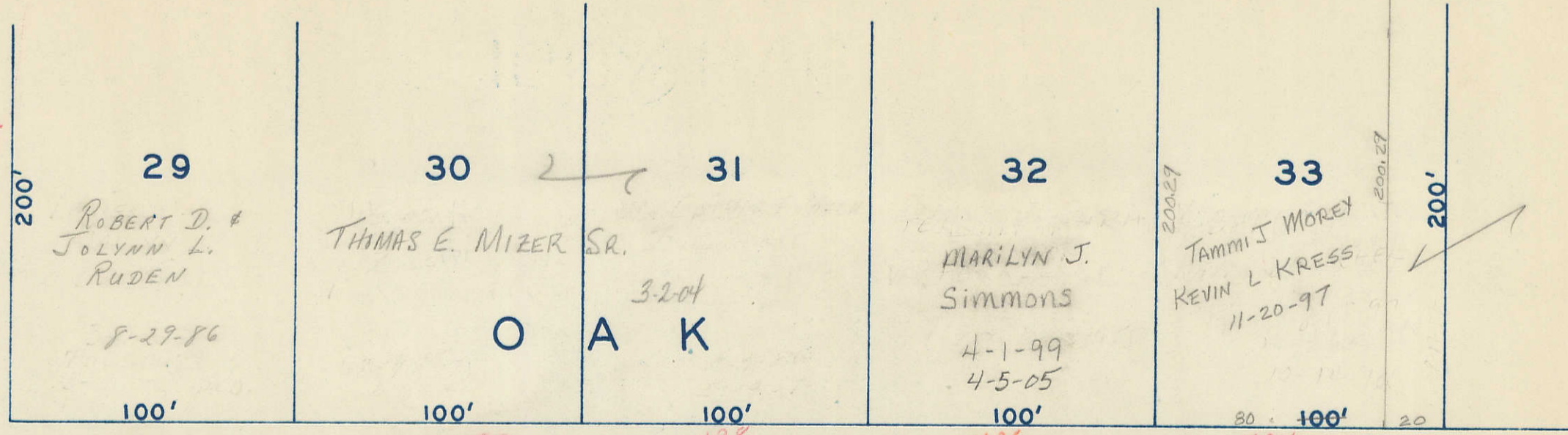
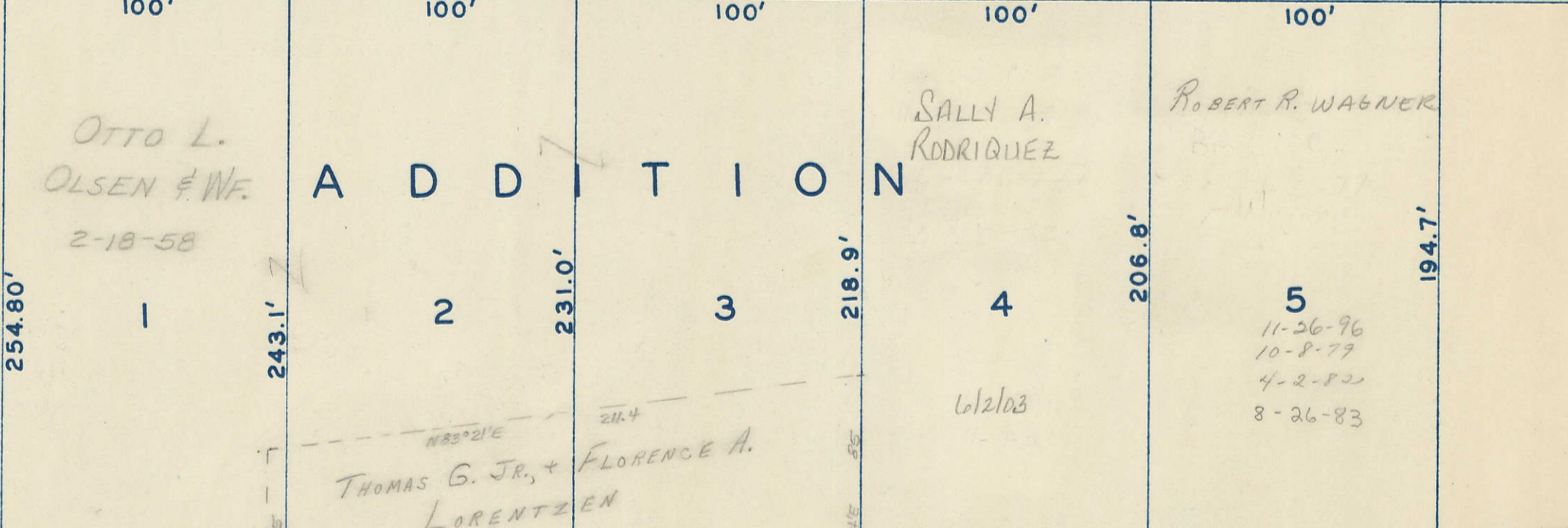
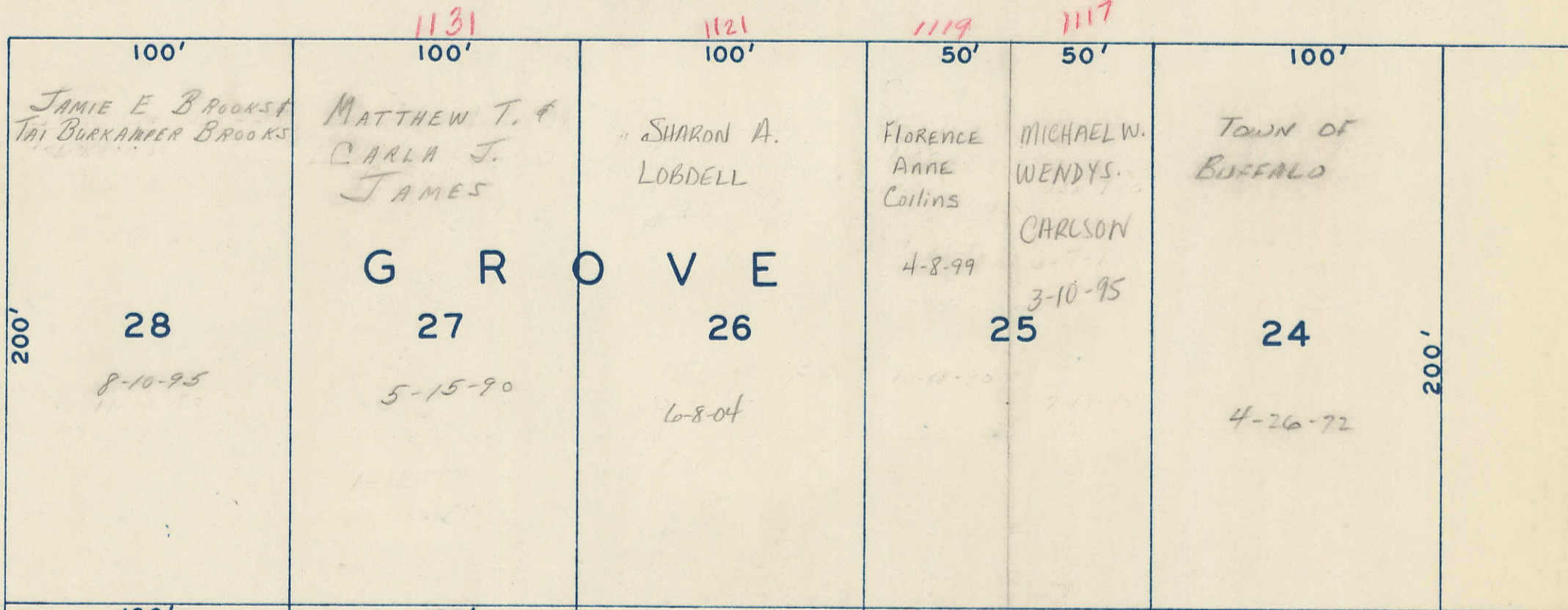


38

CORPORATE LIMITS LINE



60' CHESNUT ST. 60'



ELM ST. 60' 1140 CORPORATE LIMITS LINE 1116

FRONT ST. HWY. NO. 22 66'

Transfer Page T.L. 836

Iowa, Chicago & Eastern Railroad Corporation
8-22-02
E.M. ST. & P.R.R.
I.A.M. 500

42