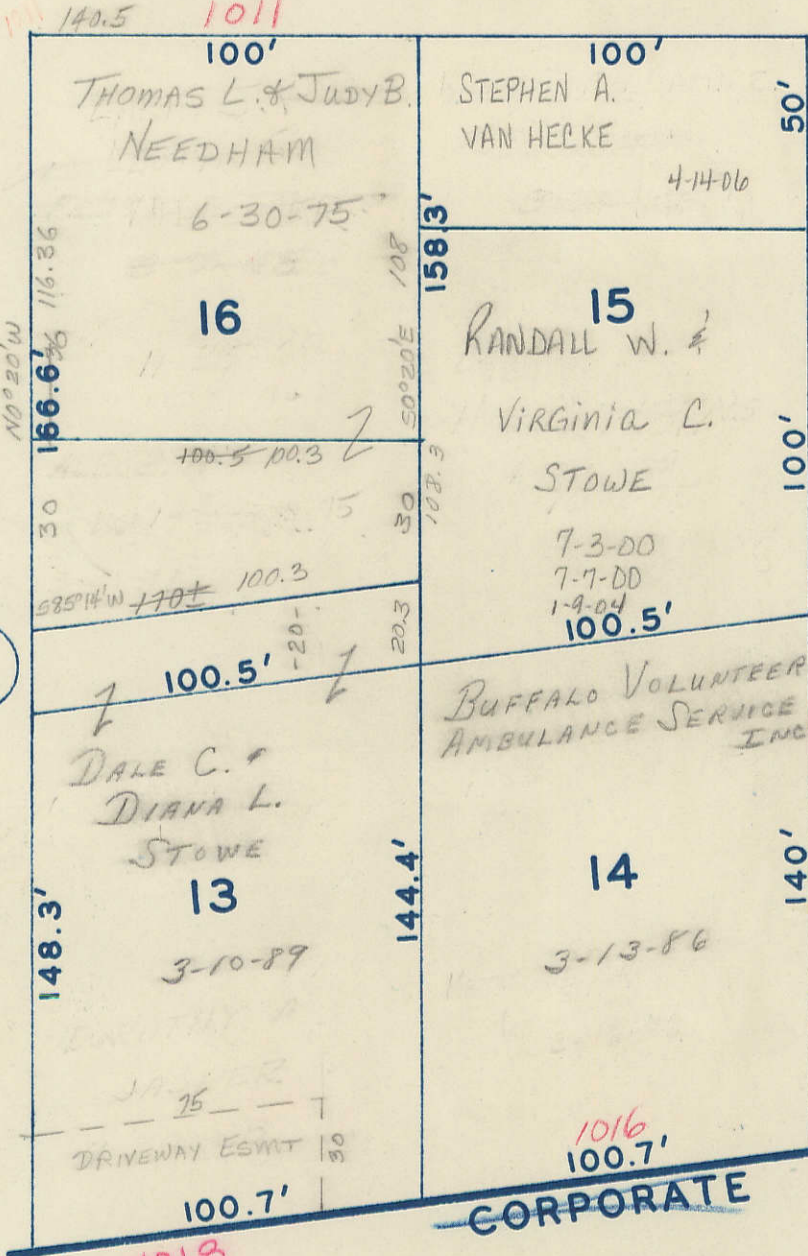


Transfer Page T.L. 836

60' CHESNUT ST. 60'



42

Transfer Page T.L. 836

U.S.

CORPORATE

LIMITS  
HIGHWAY

NO. 22

60' ST. 60'

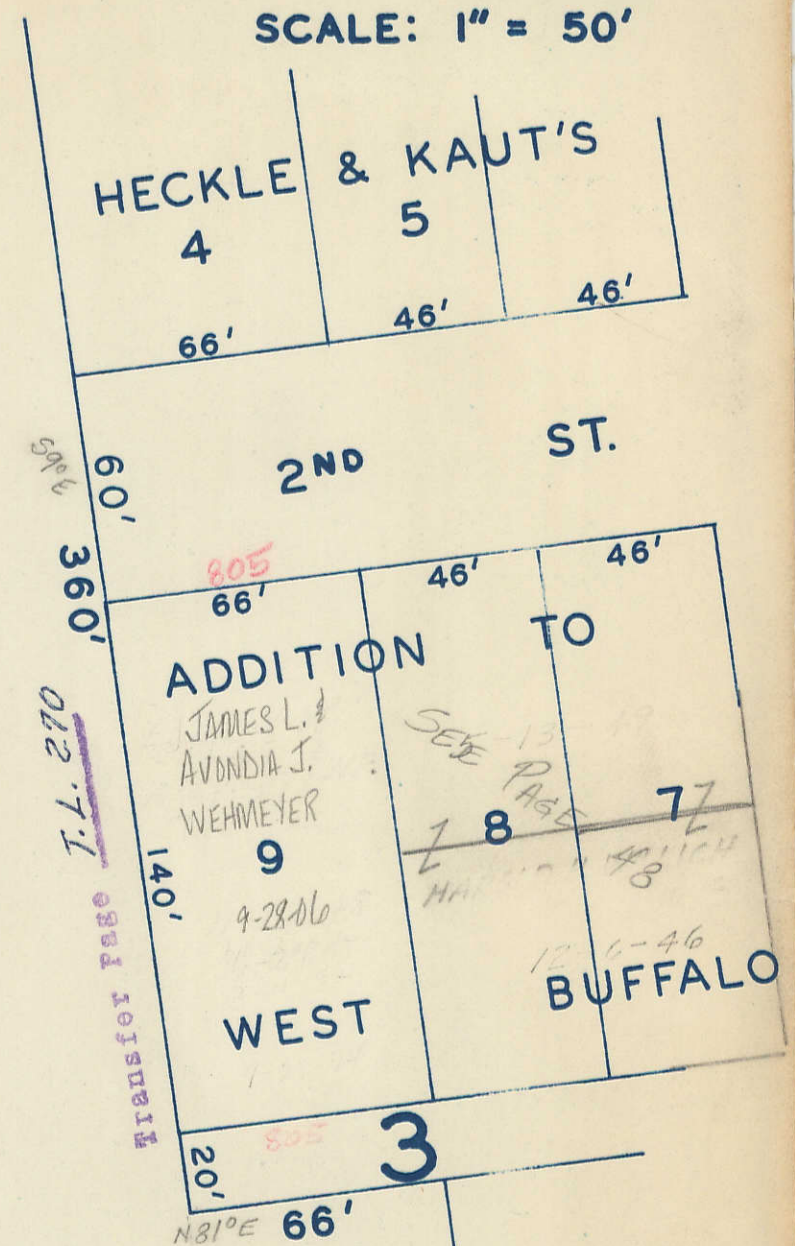
MAPLE

LEVSEN ORGAN COMPANY

498.95'

40

A.W. REMLEY  
12-31-64



Transfer Page T.L. 270

2ND ST.

48 SEC. 22

381.30'±

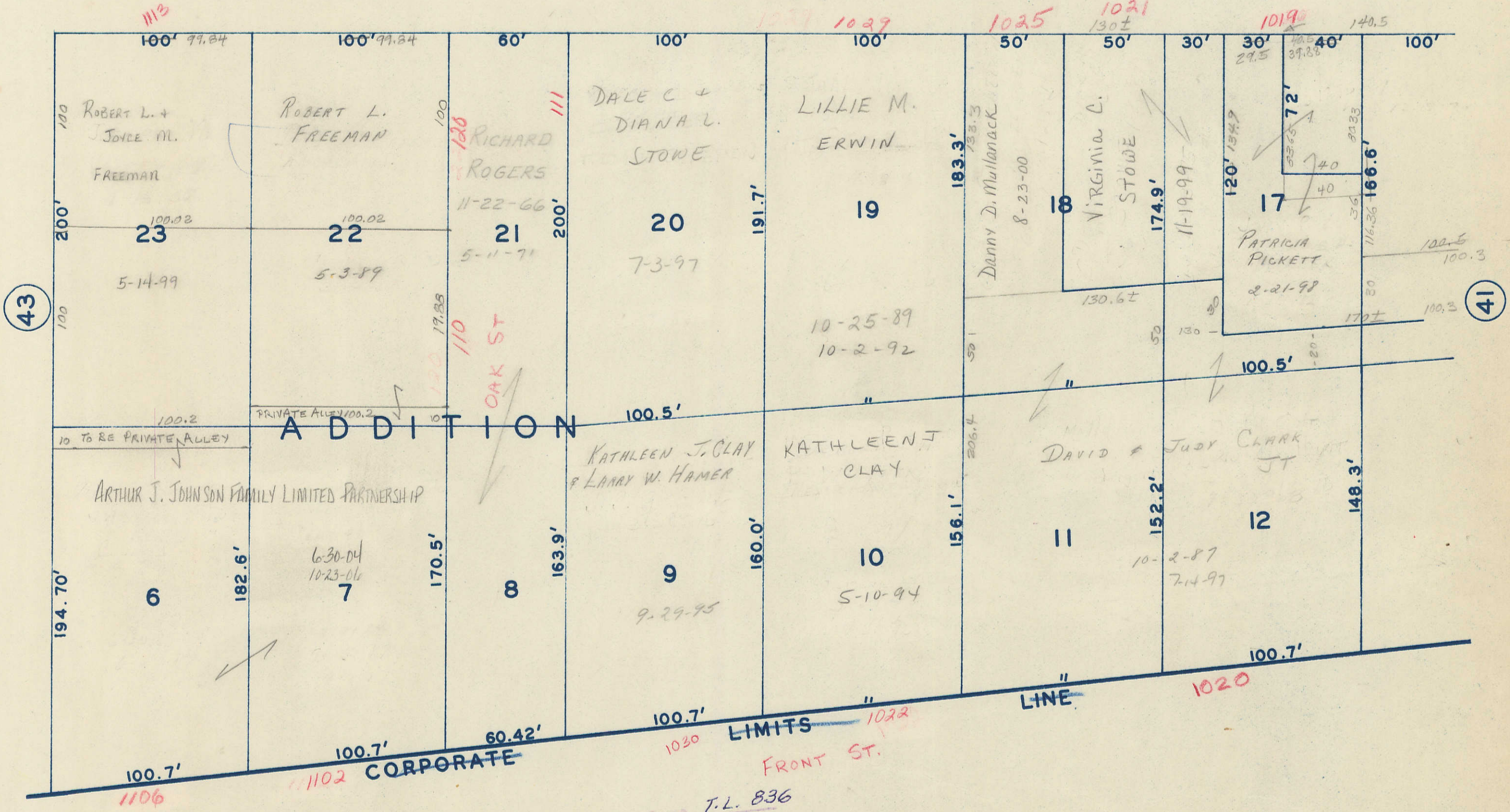
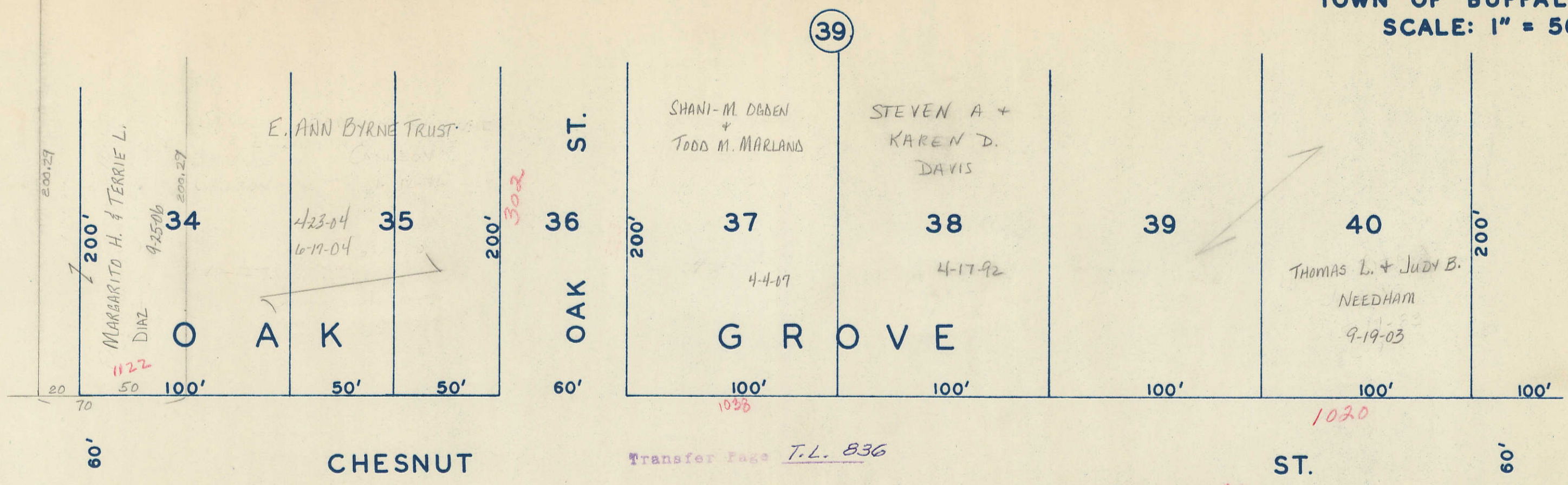
902 FRONT

S80°36'W 485.7

N79°36'E 476.17

SYRACO 500 C-M ST P & RR I & M





Transfer Page T.L. 836

Transfer Page T.L. 836

~~CM&STP&RR~~  
 SLACO SPO IATA  
 Iowa Chicago & Eastern Railroad Corporation  
 8-22-02