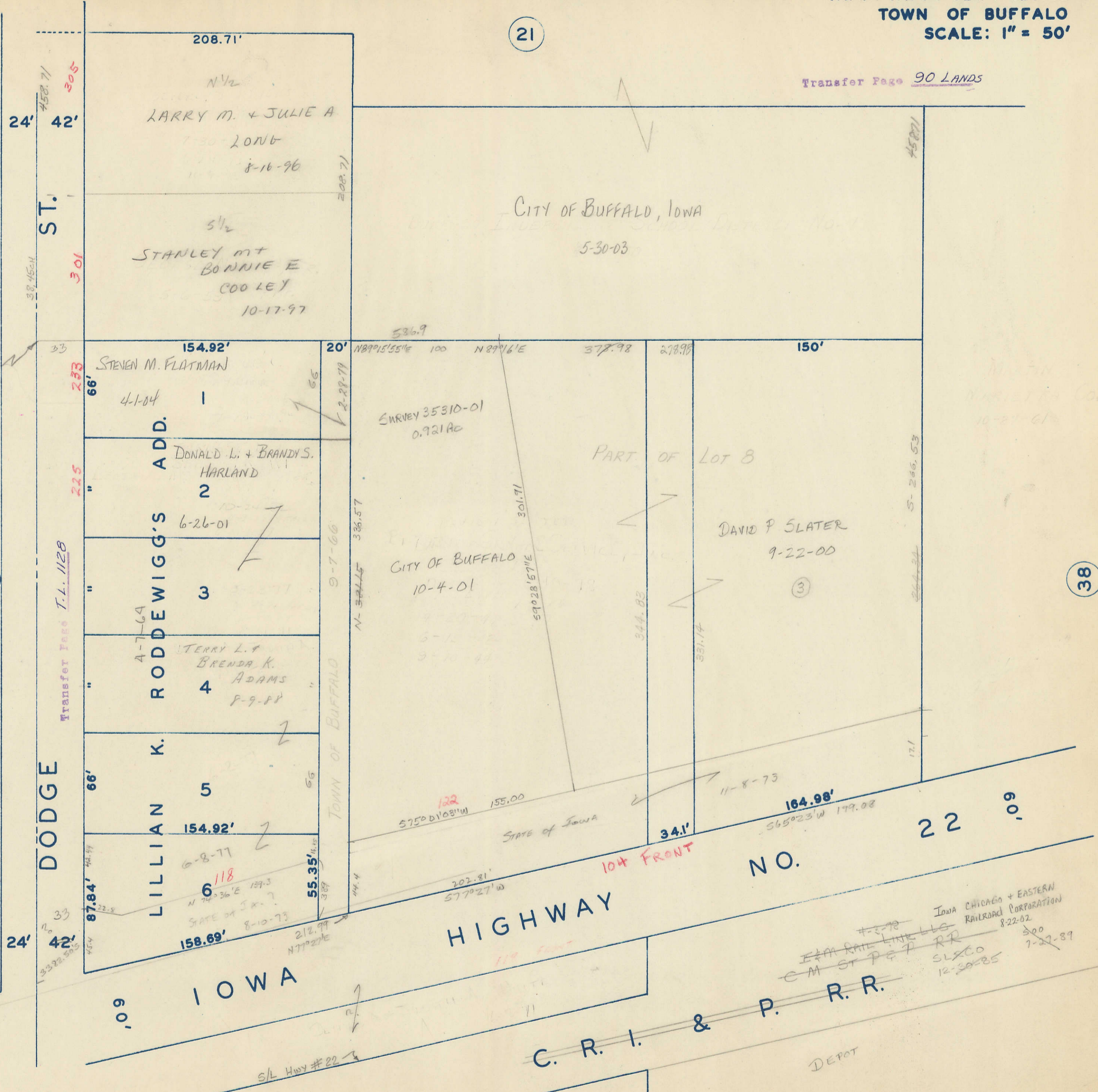


Transfer Page 90 LANDS

21



30.12 CH. S. &  
66' E. OF N.E. COR.  
LOT 9 BLK. 3

36

38

DODGE ST.

RODDEWIG'S ADD.

IOWA HIGHWAY

C. R. I. & P. R. R.

Iowa CHICAGO + EASTERN  
RAILROAD CORPORATION  
8-22-02  
SLXCO  
12-30-25

44

Transfer Page T.L. 1128

24'

24'

ST.

DODGE

IOWA

NO.

22 09

104 FRONT

164.98'

SURVEY 35310-01  
0.921 AC

CITY OF BUFFALO  
10-4-01

LARRY M. + JULIE A  
1-30-2006  
8-16-96

STANLEY M +  
BONNIE E  
COOLEY  
10-17-97

STEVEN M. FLATMAN  
4-1-04

DONALD L. + BRANDYS.  
HARLAND  
6-26-01

TERRY L. +  
BRENDA K.  
ADAMS  
8-9-88

LILLIAN K. RODDEWIG  
6-8-77  
118  
8-10-73

CITY OF BUFFALO, IOWA  
5-30-03

DAVID P SLATER  
9-22-00

PART OF LOT 8

STATE OF IOWA

DEPOT

S/L Hwy # 22

458.71

38.45 CH

33

Transfer Page T.L. 1128

DODGE

24'

208.71'

154.92'

154.92'

158.69'

208.71

9-7-66

TOWN OF BUFFALO

55.35'

536.9

N89°15'55"E 100 N89°16'E

N-3ALLE 336.57

212.99

577°27'W

378.98

155.00

202.81'

278.98

34.1'

59028'57"E

11-8-73

565°23'W 179.02

4-3-78

CM ST P & P RR

SLXCO

12-30-25

8-22-02

500

7-27-89

458.71

5-266.53

264.24

17.1

MARTIN  
HARRIS CORP.  
10-21-61