

SECTION 26

Township 78-North; Range 2

EAST OF THE FIFTH PRINCIPAL MERIDIAN

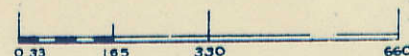
SCOTT COUNTY, IOWA

BLUE GRASS TOWNSHIP

SCALE IN CHAINS



SCALE IN FEET



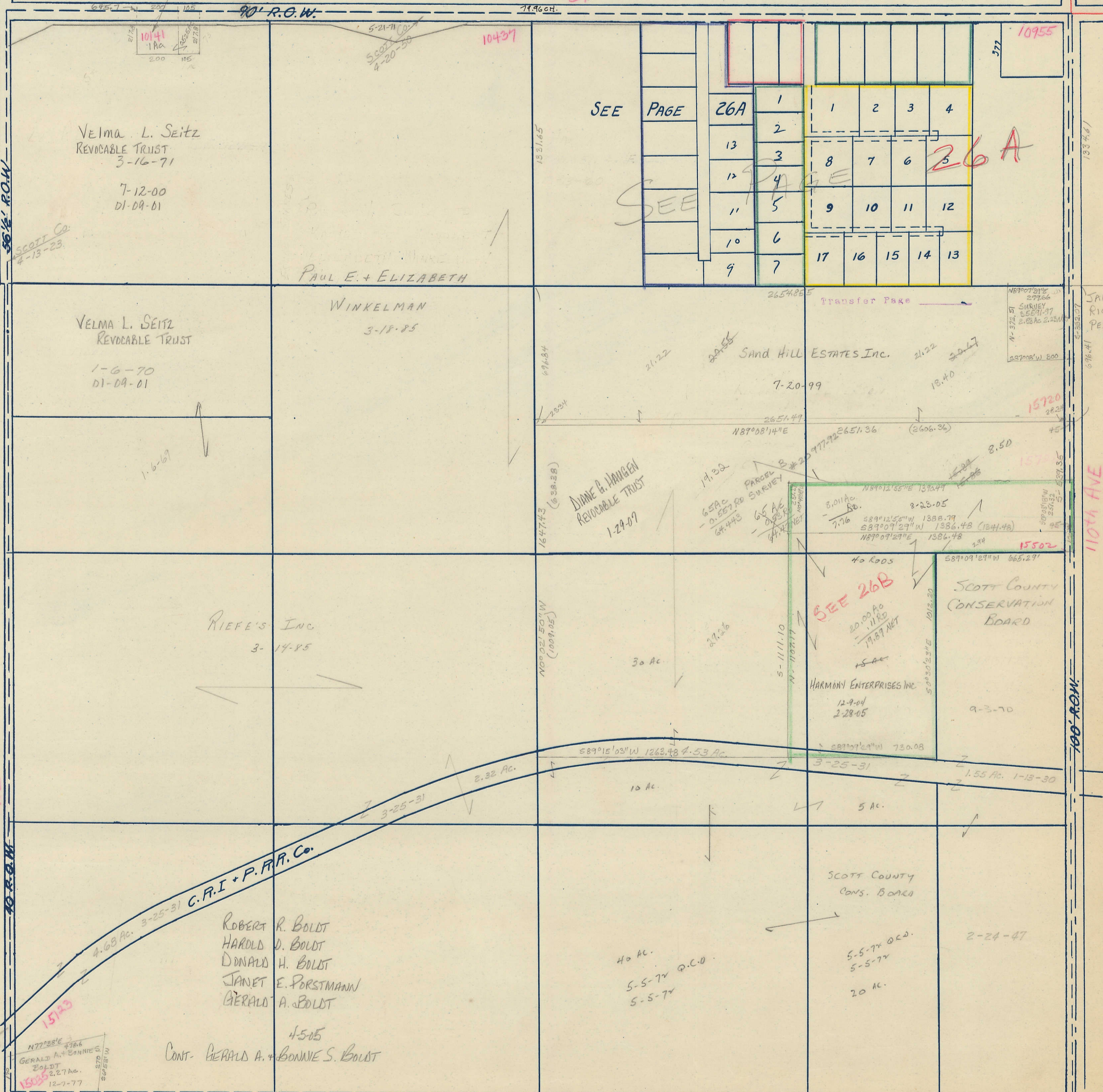
Transfer Page 57

NORTH

160th ST

Transfer Page 967 T.L.

PAUL W. & JUDY A. Mc GIVERN
1-14-75
7-18-75



VELMA L. SEITZ
REVOCABLE TRUST
3-16-71
7-12-00
01-09-01

VELMA L. SEITZ
REVOCABLE TRUST
1-6-70
01-09-01

PAUL E. + ELIZABETH

WINKELMAN
3-18-85

RIEFE'S INC
3-14-85

ROBERT R. BOLDT
HAROLD D. BOLDT
DONALD H. BOLDT
JANET E. FORSTMANN
GERALD A. BOLDT
4-5-05
CONT. GERALD A. + BONNIE S. BOLDT

DINE & HANSEN
REVOCABLE TRUST
1-29-07

Sand Hill ESTATES INC.
7-20-99

SEE 26B

SCOTT COUNTY
CONSERVATION
BOARD

HARMONY ENTERPRISES INC.
12-9-04
2-28-05

JANET E. + RICHARD R. PETERSON
5-23-85
2-11-98

WEST

EAST

100th AVE

110th AVE

100' ROW

SOUTH