

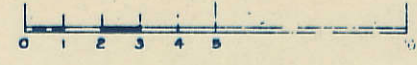
SECTION 25

Township 78 - North; Range 2

EAST OF THE FIFTH PRINCIPAL MERIDIAN

SCOTT COUNTY, IOWA BLUE GRASS TOWNSHIP

SCALE IN CHAINS

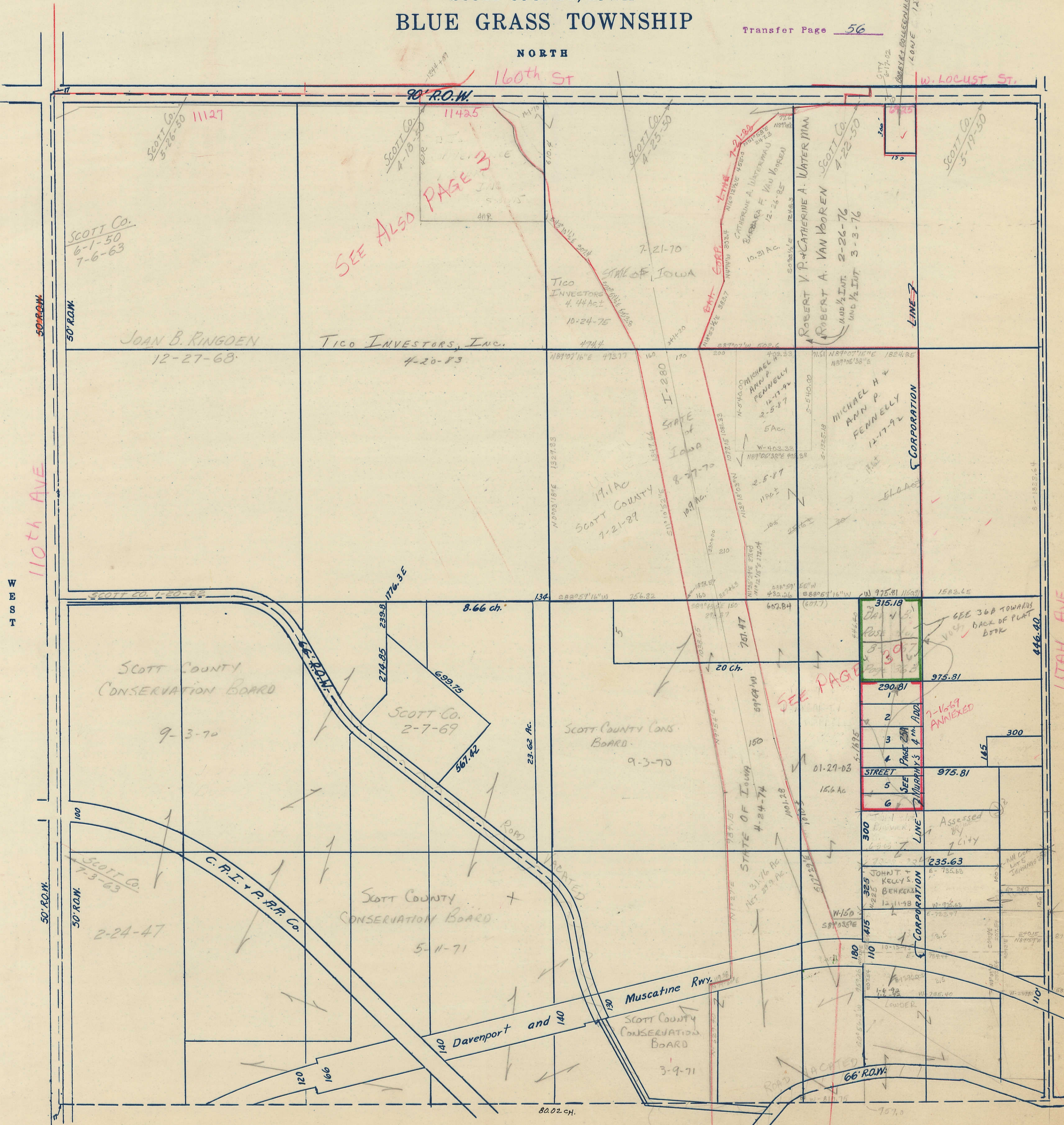


SCALE IN FEET



Transfer Page 56

NORTH



SOUTH

WEST

EAST

SEE ALSO PAGE 3

SEE PAGE 3

SEE 36A TOWARDS BACK OF PLAT BOOK

7-Vol 89 ANNEXED

Assessed by City

JOHN T. KELLY & BEHREN CORPORATION

LOWDER

160th St

W. LOCUST ST.

50' ROW

110th AVE

LITAH AVE

SCOTT Co. 5-26-50 11127

11425

SCOTT Co. 4-25-50

SCOTT Co. 5-19-50

SCOTT Co. 6-1-50 7-6-63

JOAN B. RINGOEN 12-27-68

TICO INVESTORS, INC. 4-20-73

7-21-70

ROBERT V. P. & CATHERINE A. WATERMAN
ROBERT A. VAN YOOREN
AND 1/2 INT. 2-26-76
AND 1/2 INT. 3-3-76

TICO INVESTORS 4.44 AC. 10-24-75

19.1 AC SCOTT COUNTY 7-21-89

MICHAEL H. & ANN P. FENNELLY 2-5-87 5 AC.

MICHAEL H. & ANN P. FENNELLY 12-17-92

SCOTT COUNTY CONSERVATION BOARD 9-3-70

SCOTT Co. 2-7-69

SCOTT COUNTY CONS. BOARD 9-3-70

SCOTT Co. 7-3-63

2-24-47

SCOTT COUNTY CONSERVATION BOARD 5-11-71

SCOTT COUNTY CONSERVATION BOARD 3-9-71

JOHN T. KELLY & BEHREN CORPORATION 12-11-78

LOWDER

C.P.I. & P.P.R. Co.

Muscatine Rwy.

Davenport and 140

66' ROW

80.02 ch.

50' ROW

50' ROW

50' ROW

90' R.O.W.

LINE 7

CORPORATION

STREET

LINE

66' ROW