

DAV. ANNEX #20530  
" " #2823-96  
" " 6052-96

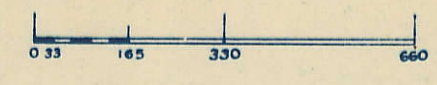
SECTION  
12

Township 78-North; Range 2  
EAST OF THE FIFTH PRINCIPAL MERIDIAN

SCALE IN CHAINS



SCALE IN FEET



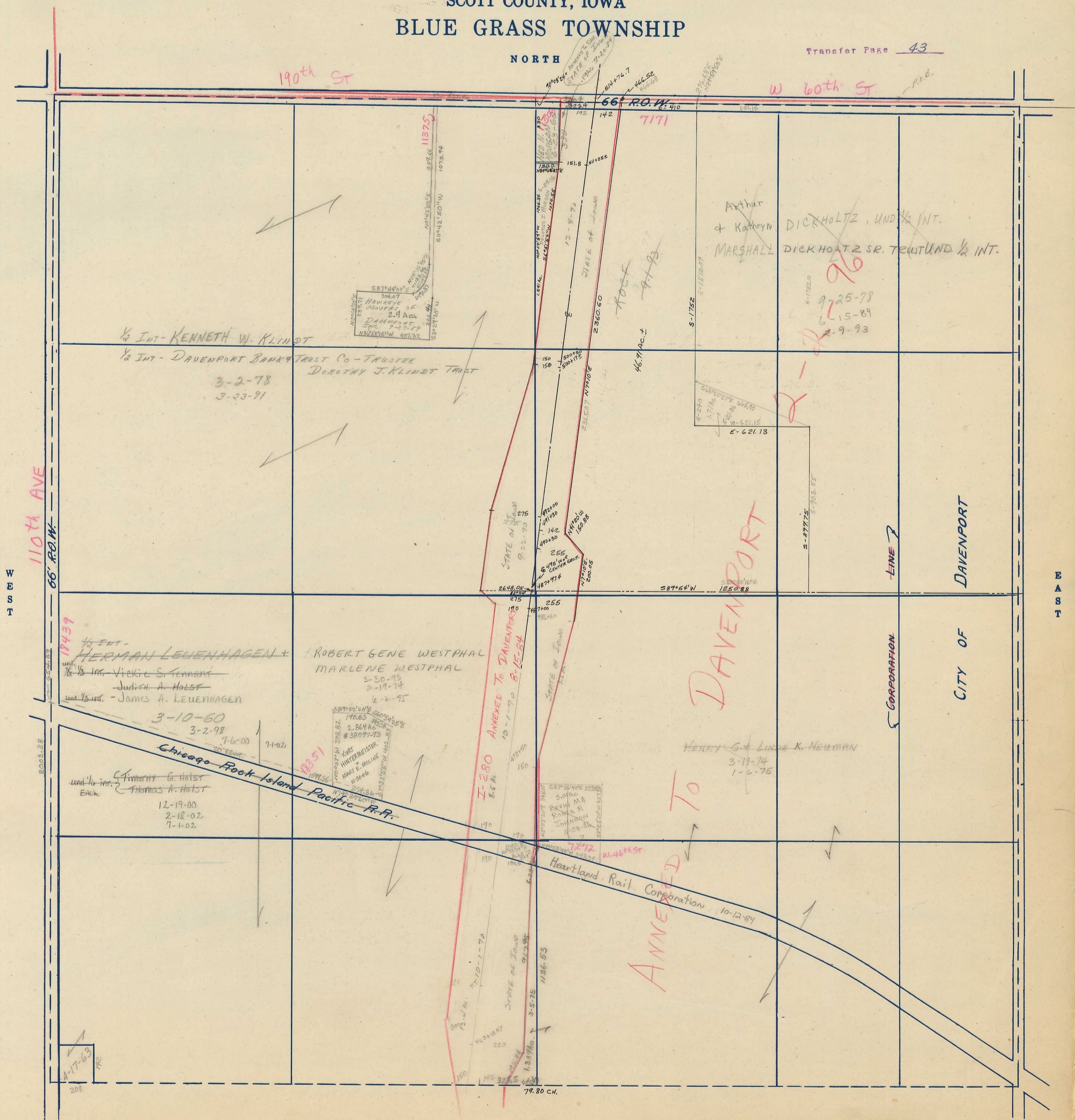
SCOTT COUNTY, IOWA  
BLUE GRASS TOWNSHIP

NORTH

Transfer Page 43

190th ST

W 60th ST



WEST

EAST

SOUTH

1/2 INT - KENNETH W. KLINDT  
1/2 INT - DAVENPORT BANK TRUST CO - TRUSTEE  
DOROTHY J. KLINDT TRUST  
3-2-78  
3-23-91

1/2 INT - HERMAN LEUENHAGEN +  
1/2 INT - VICKIE S. TENNANT  
- JUDITH A. HOLST  
- JAMES A. LEUENHAGEN  
3-10-60  
3-2-98  
7-6-00  
7-1-02

und 1/2 int. - G. HOLST  
- THOMAS A. HOLST  
12-19-00  
2-18-02  
7-1-02

ROBERT GENE WESTPHAL  
MARLENE WESTPHAL  
3-20-93  
2-19-74  
6-2-75

HENRY G. & LINDA K. NEUMAN  
3-11-74  
1-6-75

ARTHUR & KATHRYN MARSHALL  
DICKHOLTZ, UND 1/2 INT.  
DICKHOLTZ SR. TRUST UND 1/2 INT.

110th AVE  
66' R.O.W.

WEST

EAST

Chicago Rock Island Pacific R.R.

I-280 ANNEXED TO DAVENPORT  
8.5 AC.  
10-1-70 8-15-84

ANNEXED TO DAVENPORT  
10-12-84

Heartland Rail Corporation

LINE 7

CORPORATION

DAVENPORT

CITY OF

4-17-63

79.80 CH.