

DAY, ANNEX #0530-84
" " #2828-96
" " #2830-96

SECTION 24

Township 78-North; Range 2

EAST OF THE FIFTH PRINCIPAL MERIDIAN

SCOTT COUNTY, IOWA

BLUE GRASS TOWNSHIP

SCALE IN CHAINS



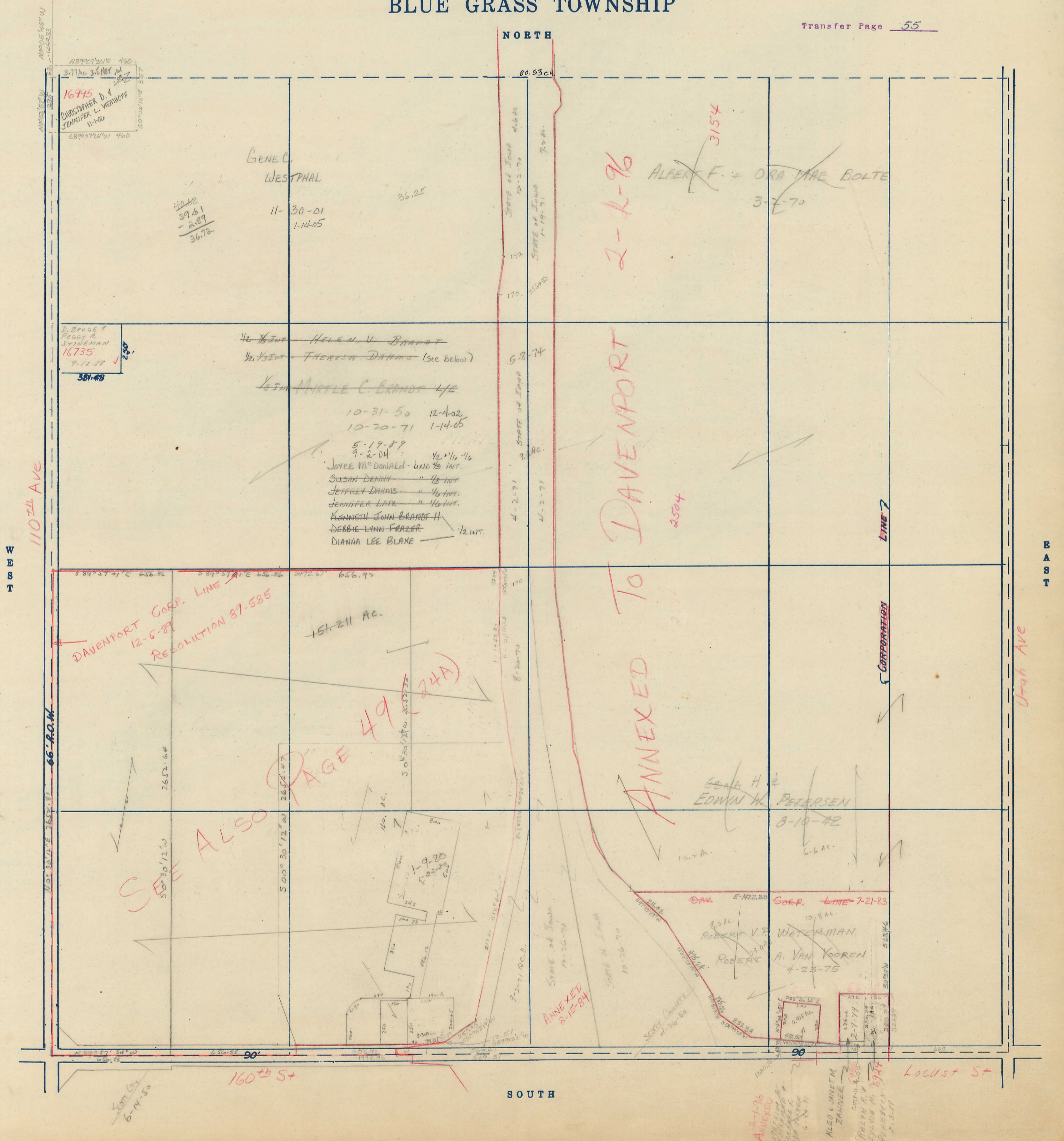
SCALE IN FEET



Transfer Page 55

NORTH

SOUTH



DAVENPORT CORP. LINE
12-6-87
RESOLUTION 87-585

SEE ALSO PAGE 49 (24A)

ANNEXED TO DAVENPORT

GENE L. WESTPHAL
11-30-01
1-14-05

JOYCE McDONALD - und 1/2 int.
SUSAN DENNY " 1/2 int.
JEFFREY DANNS " 1/2 int.
JENNIFER LAMM " 1/2 int.
KENNETH JOHN BRANDT II
DEBBIE LYNN FRAZER " 1/2 int.
DIANNA LEE BLAKE " 1/2 int.

ALBERT F. + ORA MAE BOLTE
3-7-70

EDNA H. + EDWIN W. PETERSEN
8-10-42

ROBERT V.P. WATERMAN
ROBERT A. VAN KOOREN
4-23-75

16945
CHRISTOPHER D. + JENNIFER L. WENHOFF
11-1-06

16735
PEGGY A. STINEMAN
9-12-88

160th St

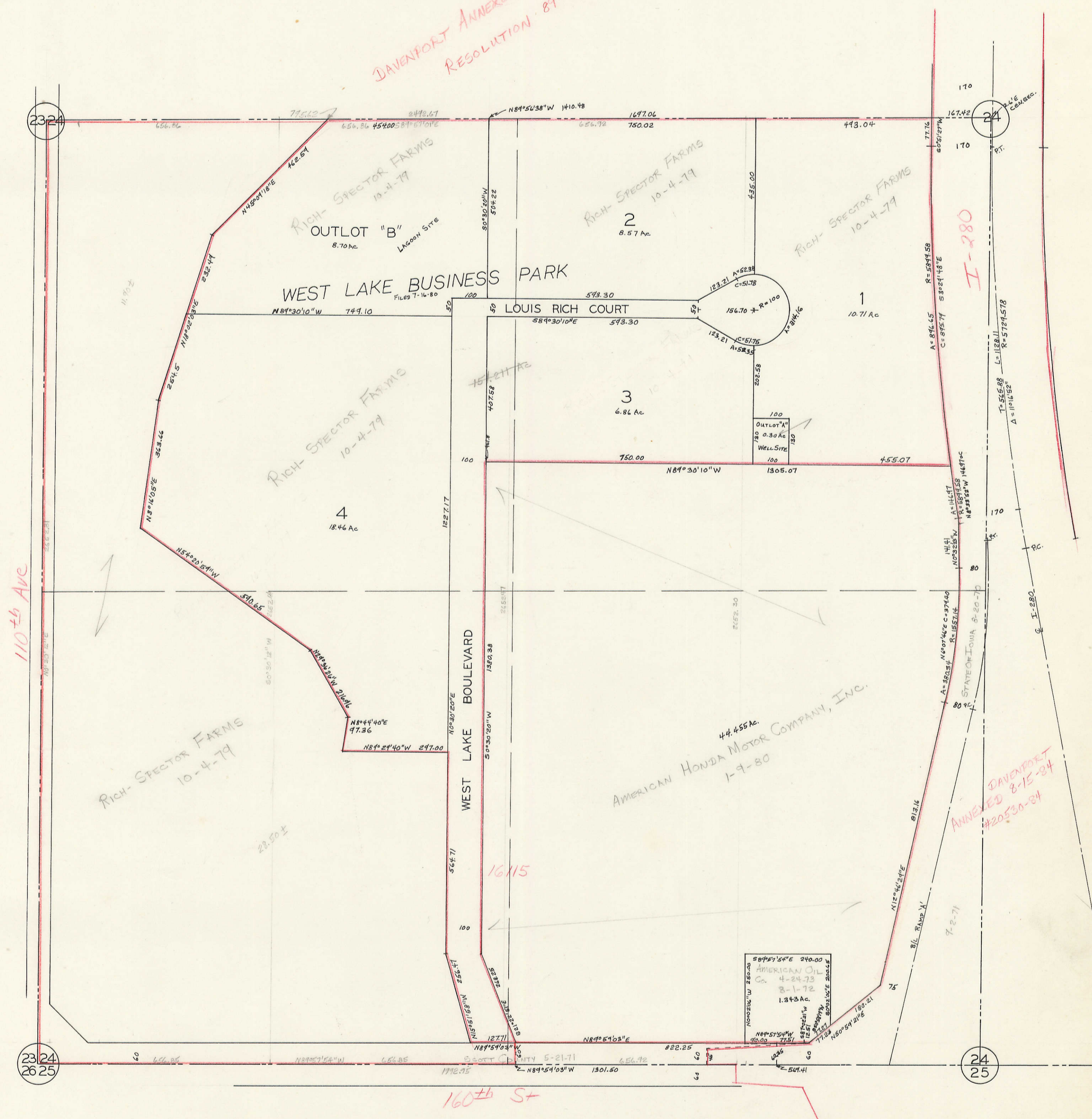
Locust St

WEST

EAST

SW 1/4 SEC. 24-78-2
SCALE 1"=200'

DAVENPORT ANNEXED 12-6-89
RESOLUTION 87-585



110th Ave

160th St

I-280

DAVENPORT ANNEXED 8-15-84
RESOLUTION #20530-84

23-24

24

23-24
26-25

24
25