

SECTION 31

Township 78-North; Range 2

EAST OF THE FIFTH PRINCIPAL MERIDIAN

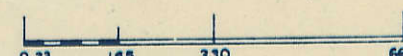
SCOTT COUNTY, IOWA

BLUE GRASS TOWNSHIP

SCALE IN CHAINS



SCALE IN FEET



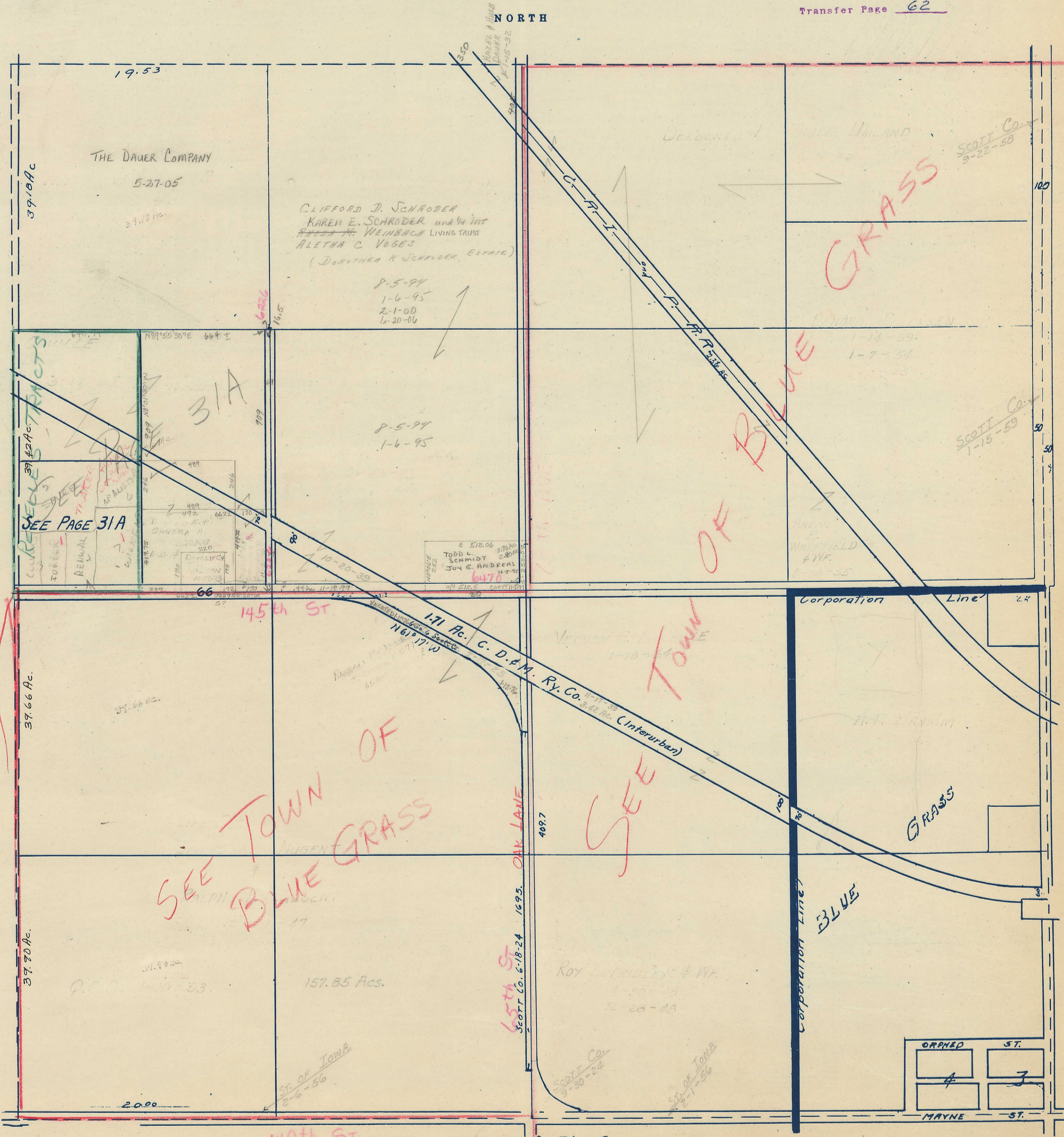
Transfer Page 62

NORTH

SOUTH

WEST

EAST



THE DAUER COMPANY  
5-27-05

CLIFFORD D. SCHRODER  
KAREN E. SCHRODER and 1/4 int  
HELEN H. WEINBACH LIVING TRUST  
ALETHA C. VOGES  
(Dorothea K. Schroder, Estate)

8-5-94  
1-6-95  
2-1-00  
1-20-06

8-5-94  
1-6-95

E 512.06  
TODD L. SCHMIDT  
JOY E. ANDREAS  
6-4-70

C. D. M. Ry. Co.  
1-11-33  
3.42 Ac. (Interurban)

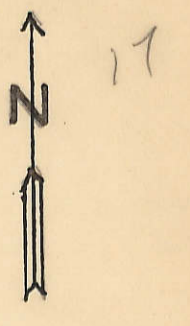
Roy L. Knudsen & Wf.  
1-30-13  
12-28-13

SCOTT Co.  
9-22-58

SCOTT Co.  
1-15-59

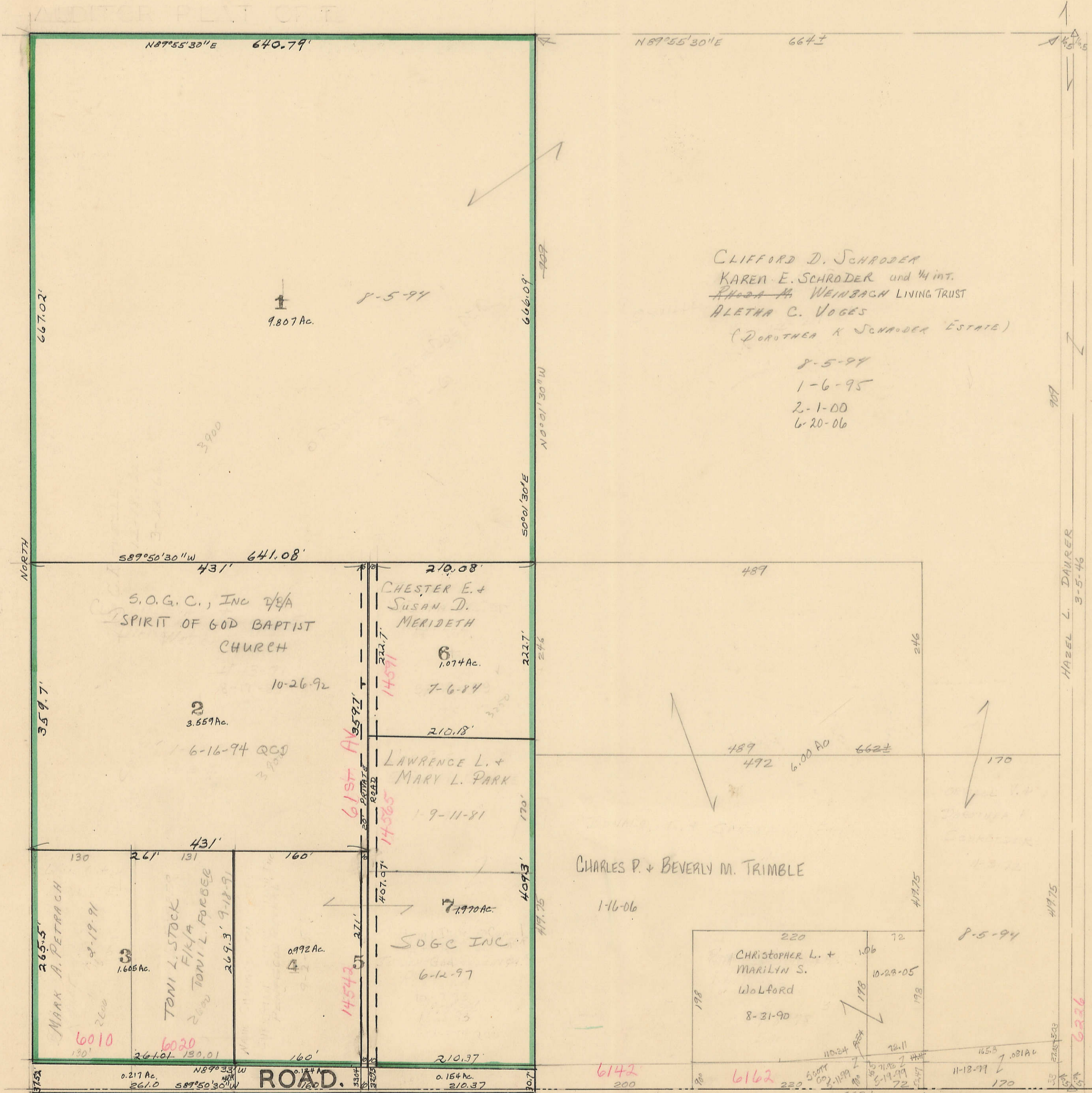
ORPHED ST.	ST.
4	3
MAYNE ST.	ST.

140th St See large scale Map for Blue Grass.



TRANSFER PAGE ~~62~~ 62 LANDS

SW 1/4 NW 1/4 SEC. 31-78-2  
SCALE: 1" = 100'



AUDITOR'S PLAT OF REVELLE'S TRACTS # 1 TO 7. 145th St

Transfer Page 1242 TL.

Done