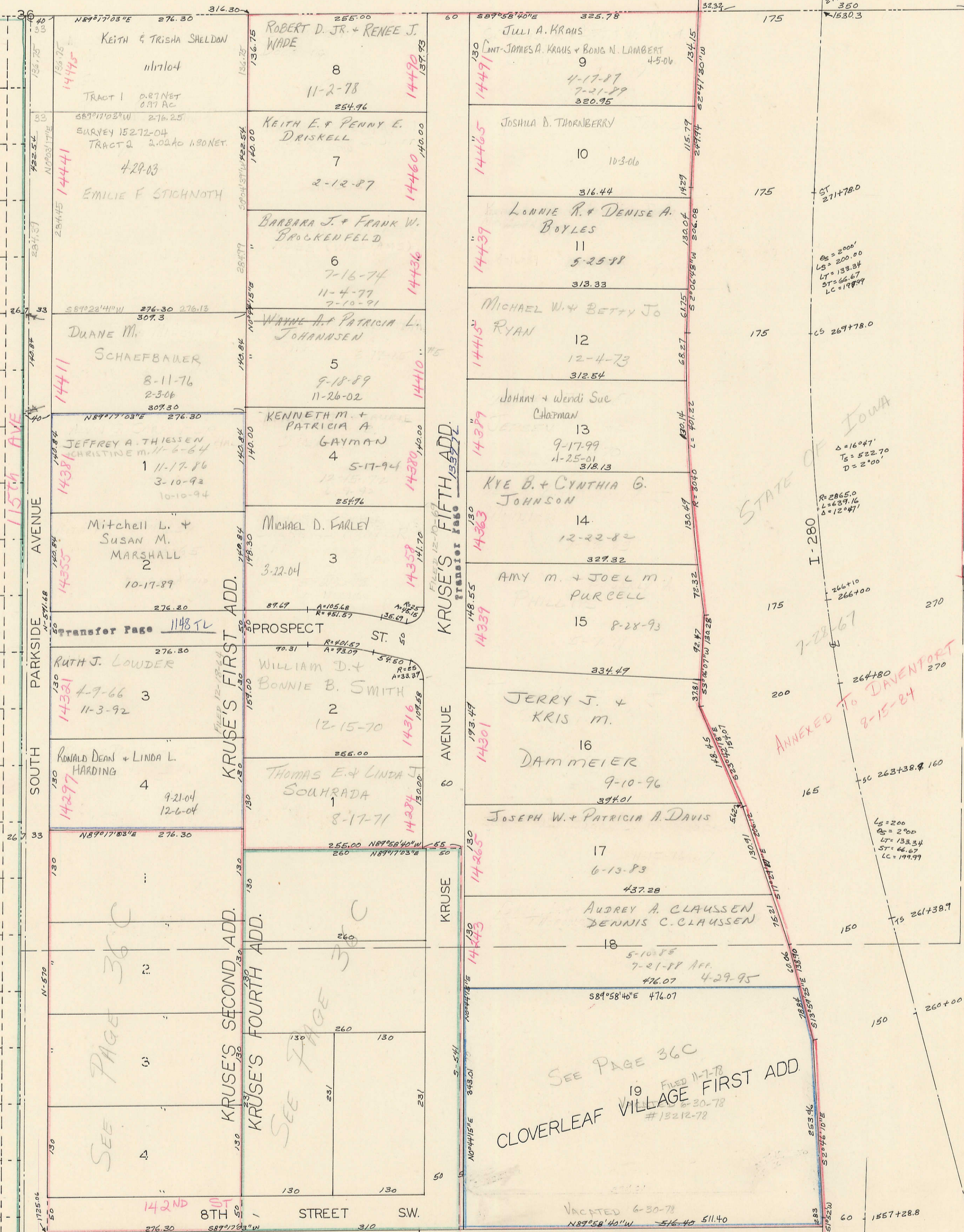


36

Transfer Page 67 LANDS
NW 1/4, SE 1/4 SEC. 36-78-2
SCALE: 1"=100



STATE OF IOWA

ANNEXED TO DAVENPORT
2-15-84

I-280

△ = 16'04"
L = 5'22.70
D = 2'00"

L = 200
B = 200
L = 133.34
ST = 66.67
LC = 198.99

L = 200
B = 200
L = 133.34
ST = 66.67
LC = 198.99

36C

36

36A

115th AVE

PARKSIDE AVENUE

SOUTH AVENUE

KRUSE'S FIRST ADD.

KRUSE'S SECOND ADD.

KRUSE'S FOURTH ADD.

KRUSE'S FIFTH ADD.

142ND ST
8TH STREET SW.

SEE PAGE 36C
CLOVERLEAF VILLAGE FIRST ADD
FILED 11-7-78
#13212-72

E/S RAMP