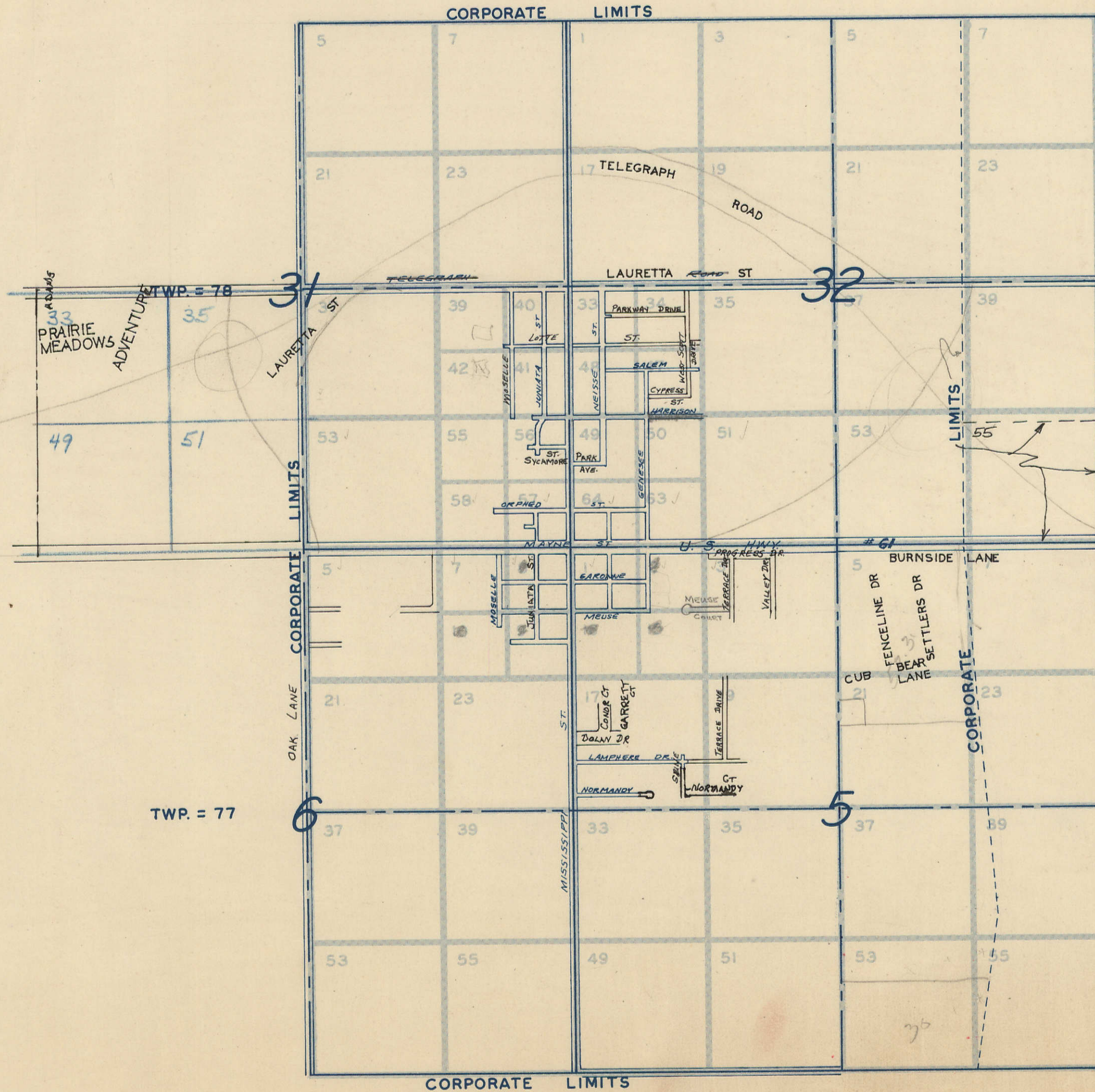


TOWN OF BLUE GRASS

G. INC 200
1 Misc 397
1825-91
10489-98

PART OF SECTIONS 5 AND 6, TWP. 77 N. R-2, EAST
OF THE 5TH P.M. AND PART OF SECTIONS 31 & 32
TWP. 78 N. R-2, EAST OF THE 5TH P.M.



NOTE: PAGE NUMBERS ARE CIRCLED.