

(29) SEC.-29
BLUE GRASS TWP.

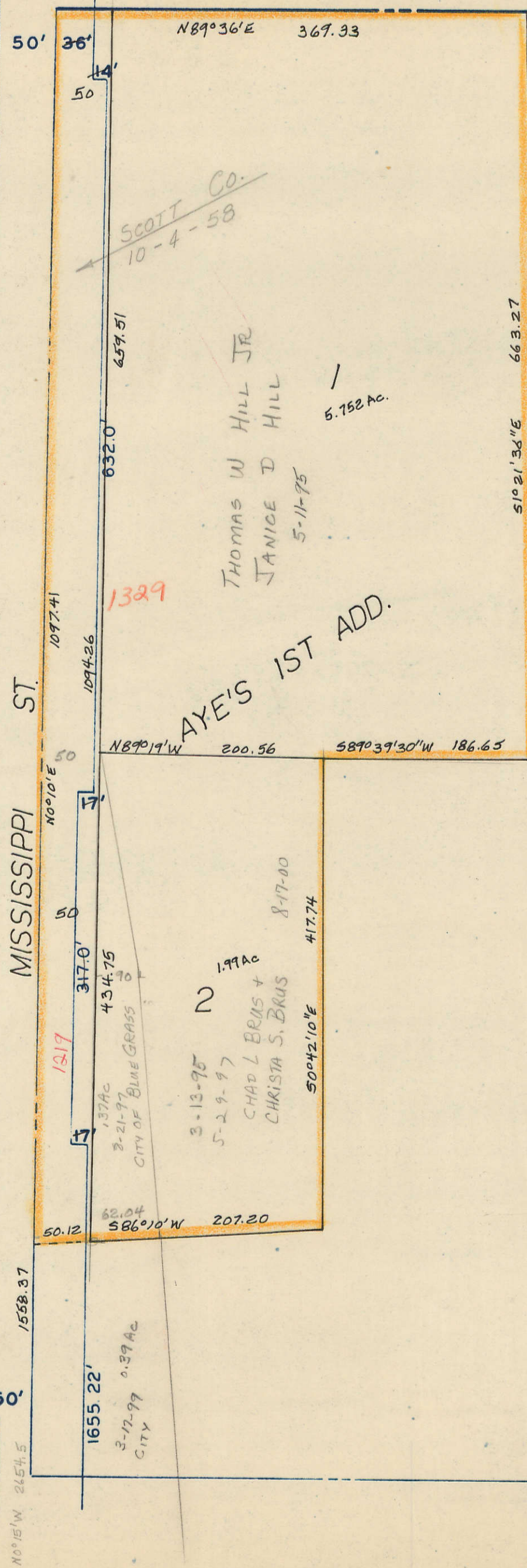
Transfer Page 63

N89°57'20"E 2667.0

CORPORATE LIMITS LINE

(7) SEC.-31

MISSISSIPPI ST.



1/2 INT - PAMELA ANN AYE
 1/2 INT - B DIANE AYE
 1/2 INT - FRANCIS E & PATRICIA S DORN TRUST (PATRICIA S DORN TRUSTEE)

1/2 INT - PAMELA ANN AYE
 7-31-74
 1-30-90
 8-31-95

(3)

(17)

Sec 32-78-2