

39

N87°56'E 420.00

NW COR
LOT 8. STOFFERS 4TH.

Transfer Page 62

N0°11'E 325.40

ST. ANDREWS CATHOLIC CHURCH
7-27-77
3.137 AC.

S0°11'W 325.40

S87°56'W 420.00

VERNON G. + MARIE EHRECKE
1-18-64
4-6-82

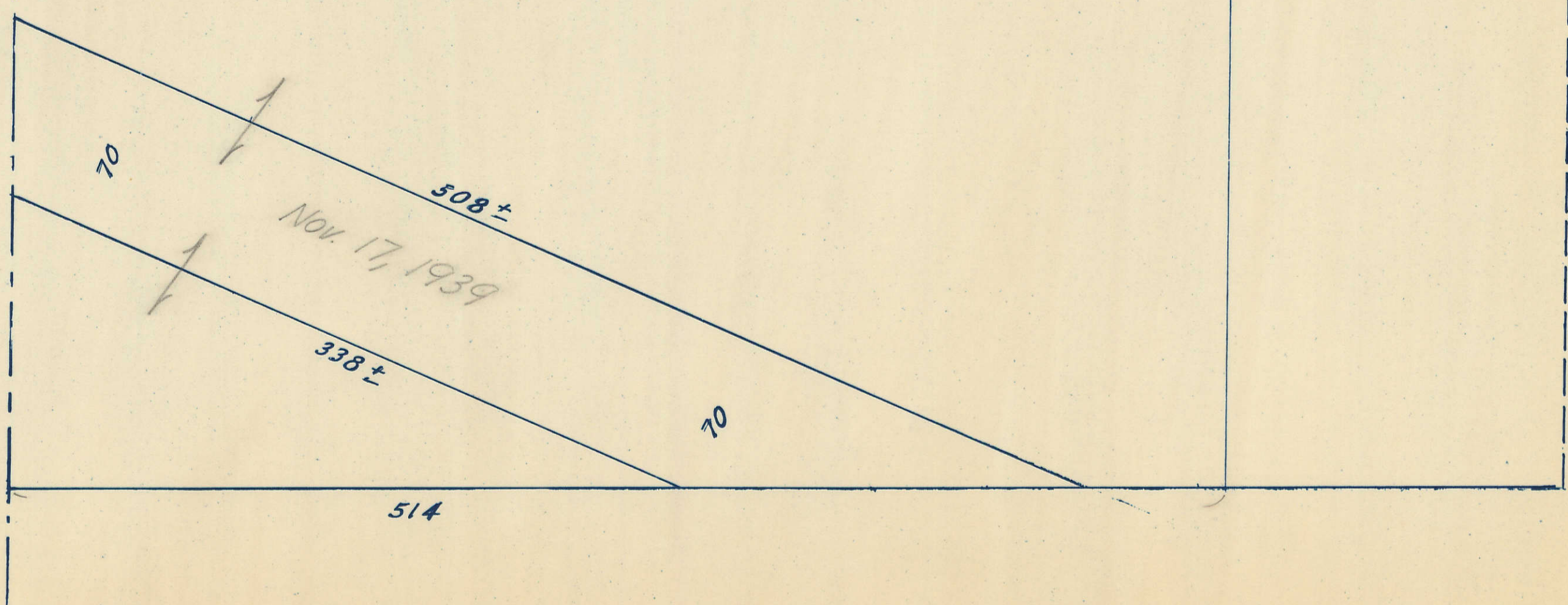
WEST SCOTT
IMPROVEMENT CO.
6-9-65

SEE

LINE 1350
CORPORATION 1330

37

41



55