

SEE PAGE 21 J

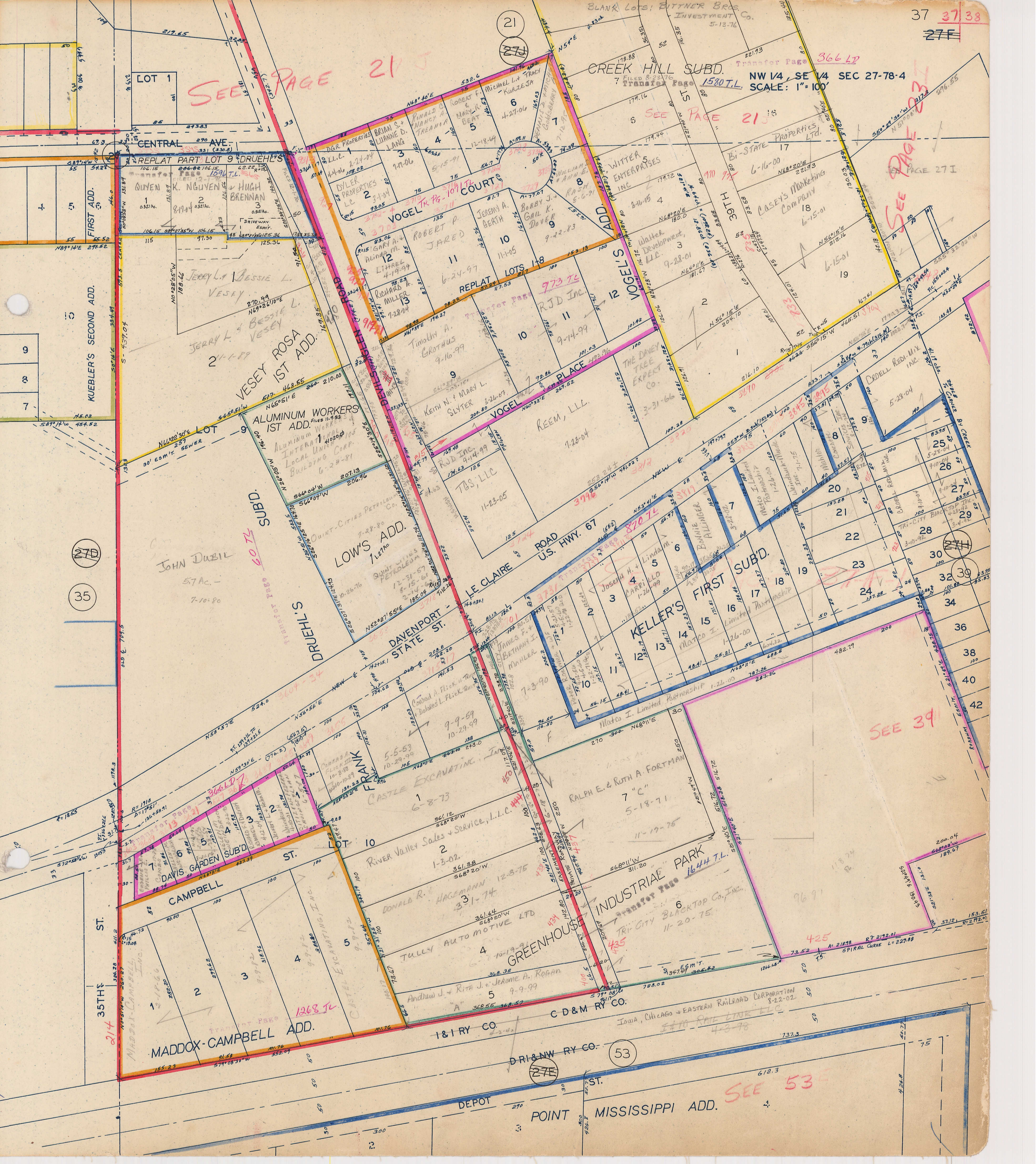
CREEK HILL SUBD. Transfer Page 366 L7  
NW 1/4, SE 1/4 SEC 27-78-4  
SCALE: 1"=100'

SEE PAGE 21 I

SEE PAGE 27 I

SEE 39 I

SEE 53 E



LOT 1  
CENTRAL AVE.

REPLAT PART LOT 9 DRUEHL'S  
QUYEN K. NGUYEN  
HUGH BRENNAN

JERRY L. & BESSIE L. VESEY  
JERRY L. & BESSIE L. VESEY  
VESEY ROSA 1ST ADD.

ALUMINUM WORKERS 1ST ADD.  
ALUMINUM WORKERS LOCAL UNION #105 BUILDING CORP.

JOHN DUBIL  
57Ac.  
7-10-80

LOW'S ADD.  
1.6ac  
7-10-80

DAVENPORT STATE ST.

DAVIS GARDEN SUBD.

CAMPBELL ST.  
MADDOX-CAMPBELL ADD.

VOGEL COURT  
BRIAN S. & LIANNE D. LANG  
DYLER PROPERTIES LC  
ROBERT F. MICHAEL L. & TRACY KURZESJA

VOGEL'S COURT  
JEREMY A. BEATH  
BOBBY J. GAIL K. DOVER

REPLAT LOTS 1-8  
TIMOTHY A. BROTHUS  
KEITH N. & MARY L. SLYTER

VOGEL PLACE  
REEM, L.L.C.

LE CLAIRE ROAD U.S. HWY. 67

CASTLE EXCAVATING, INC.  
RIVER VALLEY SALES & SERVICE, L.L.C.

INDUSTRIAL PARK  
RALPH E. & RUTH A. FORTMAN

GREENHOUSE  
TULLY AUTO MOTIVE LTD

1-1 RY CO.  
DRI & NW RY CO.

WITTER ENTERPRISES INC  
CASEY'S MARKETING COMPANY

WATER DEVELOPMENT, L.L.C.

THE DANEY TREE EXPERT CO.

BOONIE BALLINGER

MATCO I. LIMITED PARTNERSHIP

INDUSTRIAL PARK  
TRI-CITY BLACKTOP CO., INC.

INDUSTRIAL PARK  
IOWA, CHICAGO & EASTERN RAILROAD CORPORATION

INDUSTRIAL PARK  
IOWA, CHICAGO & EASTERN RAILROAD CORPORATION

INDUSTRIAL PARK  
IOWA, CHICAGO & EASTERN RAILROAD CORPORATION

WITTER ENTERPRISES INC  
CASEY'S MARKETING COMPANY

WATER DEVELOPMENT, L.L.C.

THE DANEY TREE EXPERT CO.

BOONIE BALLINGER

MATCO I. LIMITED PARTNERSHIP

INDUSTRIAL PARK  
TRI-CITY BLACKTOP CO., INC.

INDUSTRIAL PARK  
IOWA, CHICAGO & EASTERN RAILROAD CORPORATION

INDUSTRIAL PARK  
IOWA, CHICAGO & EASTERN RAILROAD CORPORATION

INDUSTRIAL PARK  
IOWA, CHICAGO & EASTERN RAILROAD CORPORATION

WITTER ENTERPRISES INC  
CASEY'S MARKETING COMPANY

WATER DEVELOPMENT, L.L.C.

THE DANEY TREE EXPERT CO.

BOONIE BALLINGER

MATCO I. LIMITED PARTNERSHIP

INDUSTRIAL PARK  
TRI-CITY BLACKTOP CO., INC.

INDUSTRIAL PARK  
IOWA, CHICAGO & EASTERN RAILROAD CORPORATION

INDUSTRIAL PARK  
IOWA, CHICAGO & EASTERN RAILROAD CORPORATION

INDUSTRIAL PARK  
IOWA, CHICAGO & EASTERN RAILROAD CORPORATION

WITTER ENTERPRISES INC  
CASEY'S MARKETING COMPANY

WATER DEVELOPMENT, L.L.C.

THE DANEY TREE EXPERT CO.

BOONIE BALLINGER

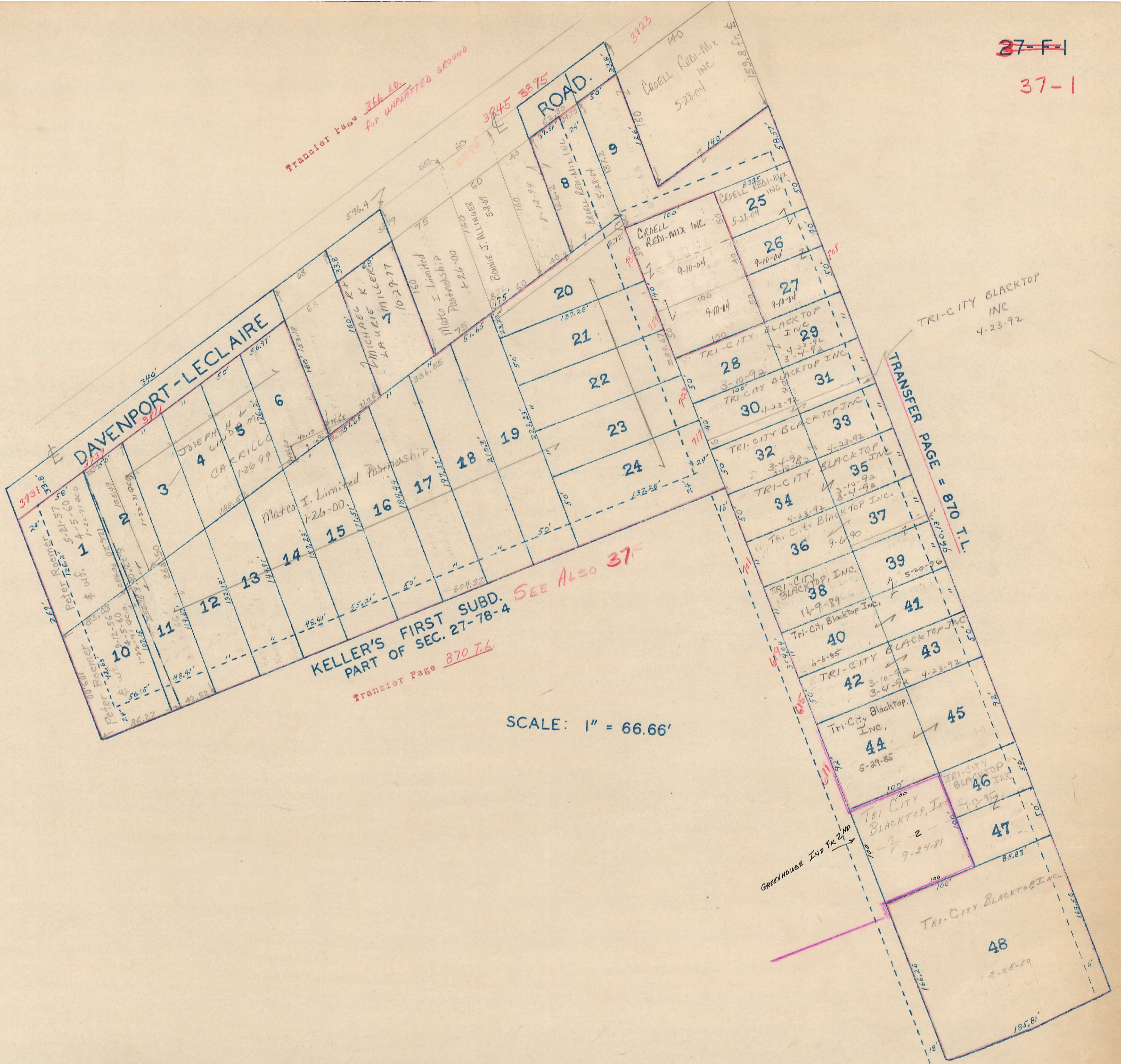
MATCO I. LIMITED PARTNERSHIP

INDUSTRIAL PARK  
TRI-CITY BLACKTOP CO., INC.

INDUSTRIAL PARK  
IOWA, CHICAGO & EASTERN RAILROAD CORPORATION

INDUSTRIAL PARK  
IOWA, CHICAGO & EASTERN RAILROAD CORPORATION

INDUSTRIAL PARK  
IOWA, CHICAGO & EASTERN RAILROAD CORPORATION



Transfer Page 366 L.D.  
for UNPARTED GROUND

3875

3923

DAVENPORT-LECLAIRE

SEE ALSO 37F

KELLER'S FIRST SUBD.  
PART OF SEC. 27-78-4

Transfer Page 870 I.L.

SCALE: 1" = 66.66'

TRANSFER PAGE = 870 I.L.

TRI-CITY BLACKTOP INC  
4-23-92

GREENHOUSE IND PK 240

TRI-CITY BLACKTOP INC